



S 378  
SPORT

 **PURSUIT**

PURE. PURSUIT.



## SPORT S 378

The S 378 is one of the newest additions to Pursuit's popular Sport family and features advanced innovations as well as the quality, fishability and versatility that you've come to expect.

Enjoy a full day of fishing from the ample cockpit until it's time to socialize. Then experience our groundbreaking new feature, the patent-pending entertainment center that moves into place at the touch of a button providing uncompromised functionality.

Take a seat at the adjustable helm with enhanced ergonomics, where you'll feel the power of the triple Yamaha® XF425 engines and effortless maneuverability that is designed to enhance your fishing prowess while indulging your senses. It even has an optional fishing package that includes upgrades such as a secondary livewell.





## SPECIFICATIONS | S 378

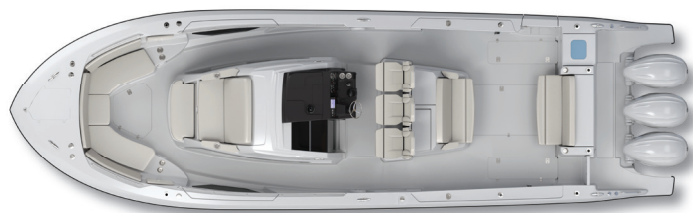
- L.O.A. 40' 5" [12.32 m]
- Beam 12' 0" [3.66 m]
- Hull Draft Motors Up 2' 7" [0.79 m]
- Hull Draft Motors Down 3' 2" [0.97 m]
- \*Clearance with Hardtop from Waterline 9' 4" [2.84 m]
- Approx. Dry Weight - Triple XF425 Engines 18,000 lbs [8,165 kg]
- \*\*Fuel Capacity 427 U.S. gallons [1,616 L]
- Diesel Generator Tank 24 U.S. gallons [90 L]
- Fresh water Capacity 45 U.S. gallons [170 L]
- Holding Tank Capacity 22 U.S. gallons [83 L]
- Max. Horsepower 1275 hp [951 kw]
- Deadrise 22°

\*Hardtop Clearance shown does not include options which could increase this height dimension.  
 \*\*Net tank capacity. The usable fuel capacity will be affected by several factors, including EPA-required fuel system components, temperature and loading of the boat. These factors will reduce the usable fuel capacity by approximately 10%.

PURSUITBOATS.COM

## HULL & HELM | COLOR OPTIONS

CARBON	NEPTUNE GRAY	GULF STREAM BLUE	FLAG BLUE
--------	--------------	------------------	-----------



## PERFORMANCE | Triple Yamaha® XF425 Engines

- Cruise Speed 32 MPH at 3500 RPM
- Consumption 35 GPH [0.91 MPG]
- Range 351 Miles
- Top Speed 60.1 MPH

\*Range based on 90% of total fuel capacity

Powered by  **YAMAHA**

# STANDARD EQUIPMENT

## HULL FEATURES

- Pursuit® Protection Plan:
  - 5 Year Hull and Deck Structural Warranty
  - 5 Year Blister Free Warranty
  - 2 Year Limited Warranty
- Pursuit Fresh White Gelcoat and Laminated Hull with Vinyl Ester Resin and Engineered Fabrics
- 5 Ply Resin Infused Composite Transom System with Patented Transom Reinforcement Grid
- Infused Fiberglass Structural Grid System with Molded Finish and Integrated Bilge Water Management System
- Foam Filled Structural Grid
- Bronze Thru Hull Fittings Below Water Line
- Chrome over Bronze Thru Hull Fittings Below the 7 Degree Heel Line
- Stainless Clad Composite Thru Hull Fittings Above the 7 Degree Heel Line
- Bronze Garboard Drain with T-handle
- Trim Tabs, Lenco Electric with Auto-Retract
- Bow Eye, 5/8" 316L Stainless Steel
- Integrated Transom Platform Extensions Outboard of Engines
- Boarding Ladder, 4-Step Telescopic, Mounted in Hull Platform
- Molded Hull Side Frameless Tempered Glass Windows
- Anchor System, Integrally Molded Thru-stem
- Dedicated Transducer Location
- Forward Hull Compartmentation with One (1) 900 GPH Bilge Pump with Automatic Float Switch
- Two (2) 1500 GPH Bilge Pumps with Electric Switches
- Bow Thruster, 3.0 HP (2.2kW) with Group 31 AGM Battery, Switch and Fuse

## DECK FEATURES

- Hull and Deck Joint: Mechanically Fastened and Includes Aluminum Backing Plates at Cleat Locations
- Rub Rail: High Density PVC with Solid 316L Stainless Steel Insert
- Transom Cap, 316L Stainless Steel
- Molded One Piece Deck and Cockpit Liner with Non-Skid Pattern Area and Overboard Drains
- Flush Mounted Integral Anchor Locker with Fiberglass Lid including: Vertical Anchor Windlass with Switch at Helm and Remote at Anchor Locker, 316L Stainless Steel through Stem Anchor Roller with 8" Mooring Cleat, Chain Binder, 35lb Stainless Steel Plow Style Anchor, Self-Righting Swivel, 320' Rode (5/8" 8 Plait Including 20' of G4 Chain), Fresh and Raw Water Quick Connect Fittings and a LED Courtesy Light
- Cleats, 316 Stainless Steel, 10" Pop Up (2) Stern, (2) Spring and (2) Bow
- Molded Recessed Hatches with Gaskets and 316L Stainless Steel Latches and Overboard Drain Tracks
- Molded Transom Walkthrough with Hinged Transom Door, 316L Stainless Steel Latch and Magnetic Catch
- Self-Draining Cockpit with Molded Water Management and Bronze Ball Valves at Hull Sides
- Bow Grab Rails, 316L Stainless Steel (Port and Starboard)
- Mid-ship Grab Rails, 316L Stainless Steel (Port and Starboard)
- Transom Grab Rails, 316L Stainless Steel (Port and Starboard)
- Single Level Splashwell Deck with Non-Skid for Athwartship Access
- Shore Power Inlet, 316L Stainless Steel
- Navigation Lights, LED, 2 Mile

## COCKPIT FEATURES

- Molded Forward Bow Seating with Insulated Storage Below, Electric-Actuating Hinged Forward Facing Backrests for Port and Starboard Seats with Clear Passage Forward (Removable Jumpseat)
- Forward Table (Fiberglass) with Removable Base and Designated Storage
- Bow Sunpad Chaise for Two (2) with Tilt-up Leg Rest, Armrests and Drink Holders
- Forward Facing Seating for Two (2) Forward of Chaise

- Custom Cockpit Upholstery with Dri-Fast Foam and Mesh Backing
- Pursuit Cockpit JL Audio Custom Tuned Entertainment System: JL Media Master 12V Bluetooth® Compatible Stereo System, Premium JL Audio Speakers Eight (8) Total, Six (6) in Exterior and Two (2) Subwoofers, Two (2) Amplifiers, Remote at Bow and Ext Antenna
- Molded, Electric Sliding (aft), Entertainment Center with Corian® Accents, Molded Sink, Hot/Cold Mixing Faucet, Electric Cockpit Grill, 1.3 cu ft Top Load Refrigerator/Freezer with Hinged Fiberglass Lids, Cutting Board, Three (3) Entertainment Dedicated Storage Drawers and 120V Outlet with GFI Protection
- Aft Facing Molded Cockpit Seat with Armrests and Dedicated Storage Below
- Folding Transom Seat with Patent-pending Flipping Backrest
- Triple Helm Seat Configuration with Dedicated Folding Armrests/Footrests for Each Seat, Center Seat has Fore, Aft and Vertical Adjustments.
- Helm Seat Box Content: Slide-out Trash Can Access (Port Side) DC Panel and Battery Switch Access (Starboard Side) and Dedicated Storage for Cockpit Table and Pedestal (Aft Side)
- Bridge Machinery Access Hatch
- Extra Large Drink Holders, 316L Stainless Steel, Six (6)
- Cockpit Machinery Access Hatch
- Fresh Water Cockpit Shower with Hot/Cold Mixing Valve and Pull Out Sprayer
- Raw and Fresh Water Outlets in Cockpit with Quick Connect Fittings and 25' Hose
- Full Cockpit Breathable Coaming Bolsters with Dri-Fast Foam
- Inward Opening Side Boarding Door (Starboard Side) with Removable/Storable Ladder for Water Play
- Seven (7) LED Cockpit Courtesy Lights: Two (2) Lights at Bridge Deck, Three (3) Lights at Bow Seating and Walkways, Two (2) Lights at Cockpit Steps
- Six (6) LED Blue Mid-level Accent Lights
- Cockpit Fire Extinguisher Under Gunwale
- Dockside Fresh Water Inlet with Pressure Regulator
- Bow Seat Cover - Stamoid® Light
- Chaise Seat Cover, Front of Console - Stamoid® Light
- Entertainment Center and Seat Cover - Stamoid® Light

## FISHING FEATURES

- Rod Holders, Ten (10) Total, Stainless Steel Four (4) in Gunwale, Two (2) in Transom, Four (4) in Bow
- Lighted Oceana Blue 36 Gallon Recirculating Insulated Livewell with Fiberglass Lid and Acrylic Window
- Under Gunwale Rod Storage, Three (3) Port and Two (2) Starboard
- Under Hardtop Rod Storage, Two (2) Port and Two (2) Starboard
- (2) Fish Boxes, (41 gallon) Insulated with Diaphragm Pumps with Overboard Discharge (Port and Starboard)
- Lockable Rod Storage in Cabin
- Cockpit Tackle Center with Storage for Four (4) Plano Trays
- Aluminum Reinforcement Plates and Wiring for Downrigger Installation, Aft Gunwale (Port and Starboard)

## HARDTOP & WINDSHIELD

- Molded Fiberglass Full Beam Hardtop with Visor
- Fiberglass Hardtop with Dedicated Radar, Antenna, Outrigger Locations and 316L Stainless Steel Grab Rails (Port and Starboard)
- Powder Coated Hardtop Structural Supports
- Custom Windshield System with Tempered Side Glass and Grab Rails, 316L Stainless Steel (Port and Starboard)
- Windshield Wiper with Fresh Water Washer
- Custom Stainless Steel Ratcheting Anchor/Stern Light with Burgee Rings and USA Flag
- Six (6) Tri Color Overhead LED Lights
- Indirect Lighting Over Dash

- Two (2) Aft Facing Spreader Lights, One (1) Forward Facing Spreader Light
- Integrated Stereo Speakers (4)
- Area for Overhead Displays
- Hardtop Access/Ventilation Hatch (24" x 24")
- Horn, Trumpet

## HELM

- Molded Fiberglass Aft Tilting Helm with Instrumentation Visor, Electronics Mounting Surface, Fold Out Fiberglass Footrest/Platform and Safety Lanyard
- 12V Panel with Illuminated Carling® Rocker Switches
- 316L Stainless Steel Steering Wheel with Control Knob and Non-Slip Grip on Yamaha Electric Steering Control with Programable Steering Friction
- Top Load Glovebox (Starboard Side), (Contains USB Wireless Phone Charger)
- Pursuit Custom Triple Captain's Seats with Folding Armrests, Three (3) Sculpted Flip-Up Bolsters and Lumbar Support, One (1) Medium on Ramping Actuator, Two (2) Small Stationary
- Bow Thruster Joystick Control
- Single Windshield Wiper with Washer Control
- Compass
- Port Fold-down Footrest
- Trim Tab Control Panel and Indicator
- JL Audio Media Master Full Function Display
- Helm Drink Holders (2), 316L Stainless Steel
- 12V Outlets (1) and Dual USB Charger (1)
- Helm Fire Extinguisher
- Helm Instrument Cover - Sunbrella®
- Helm/Companion Seat Cover - Sunbrella®

## CABIN

- Molded Acrylic Access Door with Secondary Framed Screen Door and 316L Stainless Steel Locking Latch
- Full Fiberglass Cabin Deck Liner with Sound Damping Insulation
- Full Fiberglass Hull Liner with Sound Damping Insulation
- Cabin Entry Steps with Custom Handrail and Wood Treads
- Custom Solid Wood Tongue and Groove Floor Accents, Mechanical Access and Drainage
- Solid Wood Veneers on Interior Cabinetry
- Solid Wood Interior Table with Fixed Table Leg
- 240V/60 Cycle Cabin Air Conditioning with Reverse Cycle Heat, 6,000 BTU
- 19" LED TV
- Forward Berth with 4" Foam Cushions and Filler
- Port and Starboard Forward Outboard Storage
- Vista View Console Side Windows (Port and Starboard) Allow Sightlines through Hull Side Windows
- 12V Outlet one (1), Dual USB Charger one (1)
- Companionway 2-Switch Panel:
  - Two (2) Accent Floor Lights
  - Two (2) Overhead LED at Companionway four (4)
  - Overhead LED at berth
- 120V Microwave Oven
- CO Monitor
- Fire Extinguisher
- AC Distribution Panel

## HEAD (STARBOARD SIDE)

- Fiberglass Private Head Compartment with Non-Skid Pattern Area
- Corian® Countertop with Sink, Hot/Cold Faucet and Storage Cabinet Below
- Vacuum Flush Elongated Marine Head with 22 Gallon Holding Tank, Macerator Discharge Pump, 316L Stainless Steel Deck Pump-out Fitting and Bronze Thru Hull Fitting with Seacock
- Fiberglass Toilet Seat Cover
- Upper Vanity Mirror
- Toilet Tissue Holder
- Towel Rack
- Shower Sump Box Drain with Automatic Discharge Pump
- Shower with Hot/Cold Mixing Valve and Shower Wand
- Tempered Glass Head Window
- Two-Switch Panel with One (1) Overhead LED Lights, One (1) LED Floor Accent Light

- One (1) 120V Outlet with GFI Protection
- Head Door Gear Hook
- Shower Curtain with Storage Cover

## ELECTRICAL SYSTEM

- UL® Rated Fully Tinned, Color Coded Copper Wire
- Custom Built, Heat Sealed, Mechanically Crimped, Color Coded Battery Cables
- Custom In-House Built, Electrical Harness with Waterproof Connectors and Chafe Protection
- Powder Coated, Aluminum, Screen Printed (Front and Back) Battery Switch and Breaker Panel
- Bonding System: Thru Hull Fittings Below Water Line, Trim Tabs, Zinc Anode and Garboard Drain
- Six Battery System: Port Engine (1), Center Engine (1), Starboard Engine (1), Electronics (1) (AGM), Bow Thruster (1) (AGM) and House (1) (AGM)
- Single 240V 50 Amp 60 Cycle Dockside Power Connection
- 240V 50 Amp 50' Dockside Power Cord with Wireless Remote/Switch Operated Electric Cord Retract Reel
- Isolation Transformer
- Pursuit Custom 12V and 120V Interior MDP Switch Panel for Cabin Interior Circuits
- Three (3) 120V Outlets with GFI Protection
- Four (4) 12V Outlets and four (4) Dual USB Chargers
- One (1) 40 Amp Battery Charger for House, Electronics and Bow Thruster Batteries

- One (1) 20 Amp Battery Charger for Engine Batteries
- One Grounding Bus Bar

## AFT MECHANICAL SPACE

- Molded Interior White Gel Coat
- Molded Hatch with Gasket and Stainless Steel Gas Spring
- Molded Bilge Sump Area
- Aft Mechanical Space Access Step
- One (1) 1500 GPH Bilge Pump with Electronic Switch and One (1) 1500 GPH Pump with High Water Electronic Switch and Alarm with Stainless Steel Clad Composite Thru Hull Fittings
- Raw Water Pump with Bronze Sea Strainer, Seacock and Thru Hull Fitting
- Livewell Cyclone Pump with Bronze Sea Strainer
- Dedicated Fish Box Diaphragm Evacuation Pumps
- Battery Service Slide System, 316L Stainless Steel (Port and Starboard)

## FWD MECHANICAL SPACE

- One Low Profile 900 GPH Bilge Pump with Integrated Float Switch, with Stainless Steel Clad Composite Thru Hull Fitting
- Fresh Water Pressure Sensing Pump with Filter

## FUEL SYSTEM

- EPA Compliant Lined 427 Gallon Rotomolded Fuel Tank with Engine Pickups, Shutoff Valves, Digital Level Indicator, and Deck Fuel Fill Plates
- Custom Built Premium Fuel Feed Lines with Mechanically Crimped Fittings

- Three (3) Yamaha® Water Separating Fuel Filters with Primer Bulbs

## WATER SYSTEM

- 45 Gallon Water Tank with Level Indicator and 316L Stainless Steel Deck Fill Plate
- Premium Sea Tech Color Coded Water Hose System with Mechanically Crimped Ends
- Pressure Sensing/Variable Speed Pump
- Fresh Water Distribution Manifold with Dedicated Valves
- Dockside Fresh Water Inlet with Pressure Regulator
- 6 Gallon Stainless Steel Water Heater, 240V/60 Cycle
- Cockpit Shower with Hot/Cold Mixing Valve

## GENERATOR

- 240V/60 Cycle 8.0 kW Fischer Panda® Diesel Generator with Sound Shield and Service Slide
- EPA Compliant Lined 24 Gallon Rotomolded Fuel Tank with Engine Pickup, Shutoff Valves, Digital Level Indicator, Water Separating Fuel Filter and 316L Stainless Steel Deck Fill Plate
- Fire Suppression System



## Pursuit Concierge Club Membership

See your dealer for details.

*Pursuit reserves the right to change boat specifications, equipment, color schemes, and pricing, and/or discontinue models at any time without notice or obligation. Some of the boats shown include optional or dealer-installed equipment. 10/21/2021*

## OPTIONAL EQUIPMENT

### BOAT with ENGINES

- Triple Yamaha® Digital 425 XTO (Pearlescent White) with Helm Master® EX DEC Controls and Yamaha® Joystick Control with Full Maneuverability (DES, Set Point™, Autopilot) and Yamaha® Electronic Engine Flushing System, CL 7 Display

### COLOR OPTIONS

- Hull Color: Carbon
- Hull Color: Neptune Gray
- Hull Color: Gulf Stream Blue
- Hull Color: Flag Blue
- Hull Color: Fresh White
- Full Bottom Gelcoat to Keel  
*Excludes Flag Blue*
- Hull Paint: Axalta Solid with Boot stripe
- Hull Paint: Axalta Effect with Boot stripe
- Engine Paint: Solid Axalta (Triple)
- Engine Paint: Effect Axalta (Triple)
- Engine Paint: Cowling Only Solid (Triple)
- Engine Paint: Cowling Only Effect (Triple)
- Boot Stripe Color: Black/Black - *Standard*  
Navy/Navy, Platinum/Platinum, Red/Red, Scarlet/Scarlet, Arctic White/Quartz Gray
- Helm Color: Carbon - *Standard*, Neptune Gray, Flag Blue, Gulf Stream Blue, Fresh White
- Underside Hardtop Gel Color: Carbon, Neptune Gray, Flag Blue, Gulf Stream Blue
- Interior Color Options: Driftwood - *Standard*, Sand Dollar
- Exterior Upholstery Color: Sea Salt - *Standard* White/Gray

### MECHANICAL SYSTEMS

- Bow Tow Eye
- 240v/60Hz Cockpit A/C 16,000 BTU
- LED Spot Light with Remote Control at Helm  
*(Cannot Be Combined with FLIR Package)*
- Underwater Lights (4) All Color Sea Blaze X2 Spectrum
- Teak Flooring for Helm Area

- SeaKeeper 3 Gyro Stabilizer (Factory Certified Installation w/Gold Level Warranty  
*4 yrs or 3,000 hrs*)

### SPORT FISHING

- Hardtop Mounted Rod Holders (6)
- Outriggers, Taco Grand Slam 390 with 18' Premium Black Telescoping Poles and Rigging Kit
- Outriggers, Upgrade to 20' Carbon Fiber Poles  
*(Need to Order Outrigger)*
- Transom Fishing Package (Additional Livewell, Transom Cooler/Freezer)  
*(Replaces Fold Down Seat)*

### WEATHER GROUP

- Custom Retractable Sunshade with One Touch Operation
- Bow Mediterranean Sunshade, Stowable
- Aft Curtain - Sunbrella®
- Aft Curtain - Stamoid®
- Console Enclosure with Makrolon - Stamoid®  
*(Not Available with Strataglass)*
- Engine Covers - Sunbrella®, Black, Tweed, Cadet Gray, Navy (3)

### ELECTRONICS

- Stereo Upgrade: M6 Sport Speaker Covers and SiriusXM® Satellite Receiver, Includes 3 Month Subscription
- Garmin Package (Dual GPSMAP 8616 [1 XSV], Garmin OnDeck Hub, Airmar B175M 20 Degree 1KW CHIRP Transducer, NMEA 2000 Starter kit, Pursuit Custom Dash Panel, Yamaha Gateway w/cable, VHF 315, and VHF Antenna)
- Garmin® GMR Fantom 54 Open Array Radar
- FLIR Night Vision with Image Stabilization  
*(Requires Garmin® Pkg)*
- Garmin GC-14 Rear Facing Camera
- SiriusXM® Weather Receiver  
*(Subscription Required)*



**S 378**  
SPORT

Dealer \_\_\_\_\_

Dealer Prep \_\_\_\_\_

Dealer Discounts \_\_\_\_\_

Freight \_\_\_\_\_

Dealer Additions \_\_\_\_\_

Total \_\_\_\_\_

*All prices are subject to a manufacturer's material surcharge. See your dealer for final pricing.*



PURE. PURSUIT. [pursuitboats.com](http://pursuitboats.com) | 3901 St. Lucie Blvd., Ft. Pierce, FL 34946 | 772.465.6006

AMERICAN MADE 