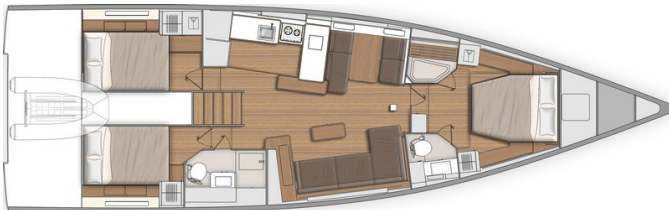




3 cabins 2 heads version:



3 cabins 3 heads - Skipper's cabin version:



## GENERAL SPECIFICATIONS

• L.O.A	17,12m	56'2"
• Hull length	15,98m	52'5"
• L.W.L.	15,40m	50'6"
• Beam	5,00m	16'5"
• Standard draft (T-keel)	2,50m	8'2"
• Standard ballast weight (Cast iron)	4 500kg	9,918 lbs
• Performance draft (T-keel)	3,02m	9'11"
• Ballast weight performance (Cast iron/Lead)	4 510kg	9,940 lbs
• Air draft (excluding antennae)	25,88m	85'
• Performance air draught (excluding antennae)	26,88m	88'
• Light displacement	15 599kg	34,380 lbs
• Fuel capacity (standard)	400L	106 US Gal
• Fresh water capacity (standard)	720L	190 US Gal
• Engine power:		
- Sail drive (standard)	80 HP	80 HP
- Propeller shaft (Option)	110 HP	110 HP

## ARCHITECTS / DESIGNERS

- Naval Architect: BISCONTINI YACHT DESIGN
- Outside & interior design: LORENZO ARGENTO

## EC CERTIFICATION

- Category A - 10 people
- Category B - 12 people
- Category C - 14 people

## STANDARD SAILS DIMENSIONS

### CLASSICAL MAST ALUMINIUM

• Mainsail	87,00m <sup>2</sup>	936 sq/ft
• Furling genoa (105 %)	78,90m <sup>2</sup>	849 sq/ft
• Code 0	179,00m <sup>2</sup>	1,926 sq/ft
• Asymmetric spinnaker	254,00m <sup>2</sup>	2,730 sq/ft
• I	21,95m	72'
• J	6,40m	21'
• P	22,00m	72'2"
• E	6,80m	22'4"

### CARBON CLASSICAL MAST (+ 1m / 3'3")

• Performance version mainsail	91,00m <sup>2</sup>	979 sq/ft
• Furling genoa (105 %)	82,00m <sup>2</sup>	882 sq/ft
• Code 0	185,00m <sup>2</sup>	1,990 sq/ft
• Asymmetric spinnaker	265,00m <sup>2</sup>	2,850 sq/ft
• I	22,90m	75'2"
• J	6,40m	21'
• P	23,00m	75'6"
• E	6,80m	22'4"

**STANDARD EQUIPMENT****CONSTRUCTION**

- Design in accordance with European Directive requirements and according to CE certification
- ISO 12215 certified structure
- Balsa sandwich infusion hull
- Vacuum infused structural inner liner (Fabrics - resin) bonded to the hull
- Deck in glass fibre/balsa wood sandwich infusion, with non-slip "diamond point" surface
- Cast iron keel attached with bolts and bonded stainless steel backplate
- Twin rudders hung with stainless steel stock
- White coloured hull - Aluminium grey hull decoration
- 8 Hull portholes

**DECK EQUIPMENT****RIGGING**

- Depending on version:
  - **Black lacquered aluminium classical mast** tapered, deck stepped, 3 Aft swept spreaders, Dyform Rigging, Dyform backstay crowfoot with manual hydraulic piston to starboard (hydraulic unit optional), Harken fixed blocks at foot of mast, Harken Switch mainsail track (without traveller)
  - **Performance carbon classical mast** tapered, deck-stepped (+ 1m / 3'3", Weight saving: 100kg / 220 lbs) 3 Aft swept spreaders ROD Rigging Textile backstay crow's foot with manual hydraulic piston to starboard Harken fixed blocks at foot of mast Harken Switch mainsail track (without traveller)
- Lacquered aluminium Racing boom with LED lighting (warm white)
- Black Racing lacquered aluminium rigid kicking strap with Dyneema tackle and friction rings (hydraulic available as an option)
- Genoa track on the roof with traveller and hauling line controlled from the cockpit
- Manual Genoa furler below deck
- 1 mainsail attachment point at bottom of cockpit with 1 stand-up block
- German system (Two-way mainsheet at the helm station)
- All lines brought back to the helm stations (except boom topping lift)
- Dyneema Complete running rigging:
  - Mainsheet halyard sheave block,
  - Genoa halyard,
  - Boom uphaul (polyester) with cleat on mast,
  - Mainsheet,
  - 2 Genoa sheets,
  - 2 Automatic reefing system
- 7 halyard clutches to port, 4 to starboard
- HARKEN Black Magic blocks
- 2 Spinnaker sheet chain plates/code 0
- Running rigging hidden
- 2 Flag halyards

**WINCHES**

- 1 Manual self-tailing winch to starboard (H50.2 STP)
- 1 Electric self-tailing winch to port (H50.2 STP)
- 2 Manual Genoa winches (H70.2 STP)
- 2 Aluminium Speed Grip winch handles
- Stowage of which handles in dedicated space in rope bags

**SAILS**

Boast supplied without sail

**MOORING LINES - MOORING**

- Polyester bowsprit with integrated anchoring gear and bobstay with spinnaker chainplate (for Code 0 and asymmetric spinnaker)
- Self-draining chain locker, Clench bolt, Piston-driven cover
- Single roller stainless steel bow fitting
- 12 V - 1 500 W vertical electrical windlass - Remote control in mooring locker
- 6 Black anodised aluminium mooring cleats (Length: 0,40m / 1'4")
- Stainless steel chafing plate

**SAIL LOCKER**

Access through T70 deck hatch, Passage width: 0,65 x 0,65m / 2'2" x 2'2"

- Stainless steel ladder
- Shelving and stowage trays
- LED lighting
- 1 230V socket

**SAFETY ON DECK**

- 1 Black lacquered stainless steel open pulpit
- 2 Black lacquered stainless steel aft pulpits with integrated fairlead
- 1 Black lacquered stainless steel central aft pulpit (Height: 960mm / 3'2")
- 2 Black lacquered stainless steel handrails on the roof
- 1 Lifebuoy support bracket on aft pulpit
- Wooden flagstaff (1 m/3'3") with integrated support on deck
- Dual textile lifelines and black lacquered stainless steel stanchions (Height: 620mm / 2') - Side boarding gate on either side
- Emergency ladder on pushpit

**COCKPIT**

- Self-draining cockpit
- Teck decking
- 2 Sail lockers below cockpit seating
- 2 Stowage lockers behind the cockpit with stainless steel support for the fenders (650 x 390mm / 2'2" x 1'3")
- 1 Access hatch to tender garage
- 1 Integrated housing in catwalks for diesel deck filler and shore power socket
- 3 water deck fillers at the forward end of the roof on the catwalks
- 1 Gas locker on forward deck next to anchor chain locker, space of 2 bottles
- Natural solid wood slatted cockpit benches
- Side helmsman's seat, wooden slats
- Foldaway helmsman foot chock
- 2 Steering wheel consoles:
  - Black composite helm (diameter 1 100 mm/3'7") fixed on white lacquered aluminium pedestal
  - Steering gear at the helm station
  - Stainless steel steering chain transmission system
  - Black lacquered stainless steel hand rail
- 1 Emergency tiller
- 1 Steering compass on port console
- Engine throttle and control panel on starboard
- 1 Cockpit shower with mixer tap in the tender garage
- 1 PPMA folding companionway door in the bottom of the cockpit - Sliding hatch made of PMMA
- Liferaft locker in front of the companionway (Space for 12 place liferaft: 0,96m x 0,59m x 0,40m / 3'2" x 1'11" x 1'4")
- Courtesy lighting (7 LED lighting points, warm white lighting)



## SWIM PLATFORM / AFT TRANSOM

- Fully opening transom, convertible to bathing platform (2,61m x 0,93m / 8'7" x 3'1")
- 3 Folding access steps to the cockpit to starboard
- Electrically controlled opening on console
- Natural solid wood decking on swim platform
- 1 Stainless steel, removable bathing ladder with dedicated stowage in the cockpit

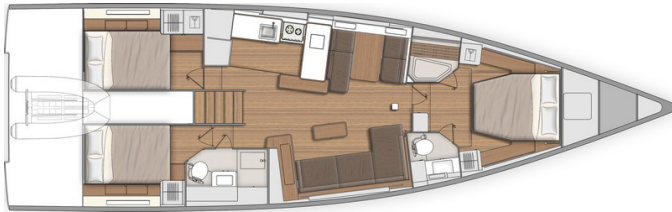
## TENDER GARAGE

- Accessible from the platform and from the cockpit  
Can be used to house a Highfield UL240 type tender (2,48m x 1,69m x 0,80m / 8'2" x 5'7" x 2'7")
- 1 Touch-operated ceiling LEDs

## INTERIOR

- Alpi teak woodwork and white lacquered wood on base units and bulkheads
- Alpikord teak flooring
- Lounge Falcon 162 fabric internal upholstery
- Mattresses in the cabins (HR foam 35 kg/m<sup>3</sup>, thickness 120 mm/5")
- Beige padded ceilings (and Macadamia in the central part of the saloon)

## Standard version: 3 cabins + 2 heads



## COMPANIONWAY

- Headroom: 2,00m / 6'7"
- Saloon companionway with 5 suspended Alpikord teak non-slip steps, LED lighting below each step
  - 2 Valencia Meteor encased stainless steel handrails

## SALOON

Headroom: 2,00 - 1,97m / 6'7" / 6'6"

### Starboard saloon:

- Very comfortable Lounge type L-shaped sofa:
  - seats with HR26 and HR30 foam
  - softness thanks to the finish with hollow fibres + padding
- Coffee table, wooden top with moulded beading, access to bottle rack opposite the seat
- Storage under bench seats
- 1 Electrical panel to starboard incorporated into a piece of furniture for access to electrical connections
- 2 Portholes with integrated blind
- 2 Coachroof windows including opening porthole with mosquito net
- 2 Opening deck hatches with mosquito screen/blinds
- Indirect LED lighting below the soft and the upper part of the portholes
- 1 Adjustable reading light
- 1 USB port dual port
- 1 230V socket
- Audio:
  - Fusion RA70N entertainment system
  - 2 Interior loudspeakers
  - 2 Waterproof exterior speakers

### Port saloon:

- Wooden table with integrated sliding extension leaf
- Face-to-face bench seats with extension (can seat up to 6 diners)
- 2 Portholes with integrated blind
- Storage under bench seats
- 1 Deep storage unit against bulkhead + 1 Valet tray (unless air conditioning option chosen)
- Indirect LED lighting on the upper part of the portholes
- 1 230V socket close to forward bulkhead
- Pillar with beige cover

## GALLEY - PORT

Headroom: 2,01m / 6'7"

- C-shaped galley
- Corian Glacier White work top with moulded teak beading
- 1 1 rectangular stainless steel sink - 1 Mixer tap with hot/cold water under pressure
- 1 Gas cooker 2 burners - Stainless steel oven on gimbal (17L) - Stainless steel protection handrail - Stowage below the oven with drop-down door
- 1 Stowage on work top with top opening (Space for optional 36 L stainless steel cool box)
- 12 V 174 L fridge with integrated 16 L freezer (-18 °C), 1 Front opening door
- Fitted lockers and closed shelving
- 1 Bin (20L)
- 1 Base unit: 1 drawer on the side, 2 doors, 1 shelf
- 2 Opening portholes with mosquito nets

## OWNER'S CABIN

Headroom: 2,01 - 1,96m / 6'7" - 6'5"

- Central double bed (2,00m x 1,60m - 1,15m / 6'9" x 5'3" - 3'9") with Lounge Greige 160 fabric padded bedstead
- 1 Bed access sideboard
- 1 Chair on each side of bed with Lounge Falcon 162 fabric
- 2 Shoe stowage beneath the bed
- 2 Hanger closets, with incorporated LED lighting
- 1 Central full-height unit with LED lighting: 4 drawers at the bottom, 1 door with 4 shelves, mirror inside the door
- 2 Night tables
- 2 Flexible and adjustable bedside lamps
- 1 T70 flush deck hatch with blind/mosquito net
- 2 Portholes with rigid sliding blind
- 1 230 V power socket on each side of the bed
- 1 dual port USB outlet on each side of the bed
- LED indirect lighting + Spot lighting

## 2 PRIVATE HEADS

### To starboard:

Headroom: 1,92m / 6'4"

- 1 Manual toilet
- 1 80 L / 13 US Gal rigid holding tank
- Work top in Corian Glacier White
- 1 Integrated polyester basin - Mixer tap
- 1 Cabinet - Mirror
- Toilet accessories
- 1 Deck hatch with mosquito screen/blind
- LED indirect lighting + Spot lighting

### to port:

Headroom: 1,97m / 6'6"

- Shower with seat and wooden shower base
- 2 Open stowage trays
- 1 Deck hatch with mosquito screen/blind
- LED indirect lighting



## PORT AFT CABIN

Headroom: 1,92m / 6'4"

- 1 Double bed (2,04m x 1,40m / 6'8" x 4'7")
- 1 Hanging locker, 1 Cupboard with shelves, with incorporated LED lighting
- 2 Lockers with top opening along the hull
- 1 Bed access sideboard
- 1 Drawer under the bed
- 1 Large storage under the bed, top opening (location for air conditioning option)
- 1 Flexible, swivelling reading light at bedhead
- 1 Flexible and adjustable reading light on the hanging locker
- 1 USB port dual port
- 1 230V socket
- 1 Porthole with rigid sliding blind
- 1 Opening window with below cockpit seat with pleated blind
- 2 Opening windows on coaming with pleated blind (1 with the 3 heads version)

## STARBOARD AFT CABIN

Headroom: 1,92m / 6'4"

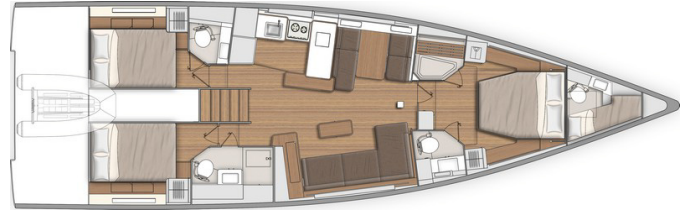
- 1 Double bed (2,04m x 1,40m / 6'8" x 4'7")
- 1 Hanging locker, 2 lockers with top opening along the hull
- 1 Bed access sideboard
- 1 Drawer under the bed
- 1 Large storage under the bed, top opening (location for air conditioning option)
- 1 Flexible, swivelling reading light at bedhead
- 1 Flexible and adjustable reading light on the hanging locker
- 1 USB socket
- 1 230V socket
- 1 Porthole with rigid sliding blind
- 2 Opening windows with below cockpit seat with pleated blind
- 1 Opening window on coaming with pleated blind

## AFT STARBOARD HEAD COMPARTMENT

Headroom: 1,95m / 6'5"

- Access from the saloon or the starboard aft cabin
- Separate shower - 1 Mixer tap - White polyester shower base
  - Corian Glacier White work top with self-draining storage
  - 1 Manual toilet
  - 1 80 L / 21 US Gal rigid holding tank
  - 1 Washbasin - 1 Mixer tap
  - 1 Cabinet + Storage space under the basin
  - 2 Mirrors
  - Toilet accessories
  - 1 Opening porthole on coaming in side window, opaque film, mosquito screen

## 3 cabins 3 heads version (Option)



This head stands between the galley and the after port cabin: single hanging locker and one opening porthole in the aft cabin

## AFT PORT HEAD COMPARTMENT

Headroom: 2,03m / 6'8"

Access by the aft starboard cabin

- Polyester work top with integrated basin - 1 Mixer tap - 1 Shower - White polyester shower base
- 1 Manual toilet
- 1 50 L / 13 US Gal rigid holding tank
- 1 Bathroom cabinet 2 doors
- 1 Mirror above the washbasin
- Toilet accessories
- 1 Opening porthole on coaming in side window, opaque film, mosquito screen
- 1 Fixed window on coaming, opaque film

**ENGINE**

- Engine Yanmar Diesel:
  - 80 HP/80 HP, Sail Drive, Common Rail (standard)
  - 110 HP/110 HP, Propeller shaft, Common Rail (Option)
- Engine control at the starboard helm station - Control panel
- Engine compartment:
  - Soundproofing foam
  - Ventilation: 2 air intakes and 1 forced air outlets
  - Automatic LED lighting
- Engine data visible on the B&G screen
- 1 Alternator (12V / 125 Ah)
- 2 Rotomoulded diesel tank 2 x 200 L/2 x 53 US Gal (under aft berth port and starboard) - Electronic gauge - Low level alarm - 1 Deck filler
- Filters: Seawater - Diesel - Water separator
- Foldaway three-blade propeller
- 1 Engine access through companionway (opening with 2 gas struts)
- 2 Engine access through aft cabins

**PLUMBING**

- 1 Rotomoulded freshwater tank 380 L / 100 US Gal, under berth in forward cabin - 1 Deck filler
- 2 Rotomoulded freshwater tanks 2 x 150L / 2 x 40 US Gal, under saloon floor, port and starboard - 1 Deck filler
- Pressurised electric water pump - Expansion tank - Inline filter
- 40 L / 11 US Gal Electric water heater (engine use)
- 1 Rigid black water holding tank for each WC
- Electrical shower drain pumps
- 1 Electric bilge pump
- 1 Manual bilge pump
- Transfer valves easily accessible from the companionway

**GAS**

- 1 Box for 2 gas bottles in the anchor locker (Diameter: 0,28m / 11" x Height: 0,45m / 1'6")
- Regulator and safety tap
- Gas leak detector

**ELECTRICITY**

- 12 V electrical panel (Breaker, Voltmeter, Water gauge, Fuel gauge, Battery warning, Fuel warning, Water warning) + USB port dual port + Navicolor 3.5" screen
- Radio controlled wireless light switches (no battery) for lighting (excluding heads)
- **Ship Control technology** control numerous functions from the navigation screens (or from a tablet or smartphone using a dedicated app):
  - Anchoring and masthead navigation lights
  - Lighting of boom, spreaders (optional), underwater spotlights (optional)
  - Courtesy light in cockpit
  - Direct lighting
  - Deck searchlight
  - Inverter (Option)
  - Fridge
  - Water unit
  - Bilge pumps
  - Air conditioning (Option)
  - Generator (Option)
  - Audio
  - Monitoring of tanks
  - Battery monitoring
- 12V circuit
- 3 AGM service batteries (140 Ah)
- 1 AGM engine battery (100 Ah)
- Battery cut-off switch easily accessible from the companionway
- 1 Battery charger (60 Ah)
- 1 Power distributor
- 10 230V Sockets:
  - 2 in the forward cabin
  - 1 in the forward port head
  - 1 in the aft cabins
  - 1 in the saloon (Starboard)
  - 1 at chart table
  - 1 in galley
  - 1 in the engine compartment
  - 1 in the sail locker
- 6 Dual USB socket:
  - 2 in the forward cabin
  - 1 in the aft cabins
  - 1 on the electrical panel
  - 1 at chart table
- 1 Shore power socket 230 V
- LED lighting:
  - Overhead lights, with dimmer
  - Reading lights
  - Indirect lighting, with dimmer
- LED navigation lights:
  - 1 Masthead light
  - 1 Steaming light
  - 1 Anchor light on masthead
- Deck searchlight (Halogen)
- Wire runs for option cables



## TRIM LEVEL &amp; PACKS

## TRIM LEVEL

	CONFORT	LUXE
<ul style="list-style-type: none"> <li>Coastal B&amp;G Pack</li> <li>1 Harken Performa H50.2 STPEH starboard electric manoeuvring winch (in lieu of standard)</li> <li>Windlass control in cockpit with chain counter</li> <li>Tilting transom remote control</li> <li>Retractable bow thruster + 4 Dedicated batteries (50 Amps - 12V) + 1 Battery charger (30 Amps - 24V)</li> <li>TECMA electric fresh water/sea water WC in the owner's head</li> <li>IBS sensor</li> <li>2 Additional 140 ampères service batteries</li> <li>Additional 40 ampères battery charger</li> <li>Electrical engine control on the starboard console</li> <li>Yacht Case - Tableware</li> <li>Mosquito nets for opening portholes</li> </ul>	<ul style="list-style-type: none"> <li>■</li> <li>■</li> <li>■</li> <li>■</li> <li>■</li> <li>■</li> <li>■</li> <li>■</li> <li>■</li> <li>■</li> <li>■</li> <li>■</li> </ul>	<ul style="list-style-type: none"> <li>■</li> <li>■</li> <li>■</li> <li>■</li> <li>■</li> <li>■</li> <li>■</li> <li>■</li> <li>■</li> <li>■</li> <li>■</li> <li>■</li> </ul>
<ul style="list-style-type: none"> <li>Offshore B&amp;G Pack</li> <li>2 Teak cockpit tables with extensions on stainless steel pedestal and Charcoal Grey covers</li> <li>Outside cockpit upholstery, Sunbrella Terry beige seats and backrests (terrycloth), Filter foam 80 mm/3" thickness (Density: 60F + 20S)</li> <li>Spring mattress in the owner's cabin (thickness: 180mm / 7")</li> <li>Quiet Flush fresh water/seawater electric WC in the aft starboard head</li> </ul>		<ul style="list-style-type: none"> <li>■</li> <li>■</li> <li>■</li> <li>■</li> <li>■</li> </ul>

## ELECTRONICS PACKS: B&amp;G

	COASTAL (included in the Confort trim level)	OFFSHORE (included in the Luxe trim level)
<ul style="list-style-type: none"> <li>Port and starboard helm stations: <ul style="list-style-type: none"> <li>1 12" Zeus<sup>3</sup> wide wireless multi-function touchscreen (GPS, Chart plotter, Card reader - Navionics Silver cartography included)</li> </ul> </li> <li>H5000 unit: <ul style="list-style-type: none"> <li>Aerial Wind Sensor (pole 1 m/3'3"):Windvane, Anemometer</li> <li>Sensor (Log, Speedometer, Temperature)</li> </ul> </li> <li>PC interface</li> <li>V90S VHF radio fixed to the chart table, AIS receiver function</li> <li>Windex Windvane</li> <li>Protective covers for helm &amp; consoles (Charcoal Grey)</li> </ul>	<ul style="list-style-type: none"> <li>■</li> <li>■</li> <li>■</li> <li>■</li> <li>■</li> <li>■</li> </ul>	<ul style="list-style-type: none"> <li>■</li> <li>■</li> <li>■</li> <li>■</li> <li>■</li> <li>■</li> </ul>
<ul style="list-style-type: none"> <li>B&amp;G H5000 autopilot with keyboard on port console</li> <li>WR10 Wireless autopilot remote control</li> </ul>		<ul style="list-style-type: none"> <li>■</li> <li>■</li> </ul>

## PACK FASTNET (implies pack Offshore)

- 3 Mast foot repeaters (20 x 20)
- AIS - NAIS 500
- H50 wireless VHF set



## RIGGING PACKS

---

### MAINSAIL WINCH PACK (Compatible with the 2 masts)

- Self-tailing HARKEN Performa (H50.2 STPEH) electric winch on polyester turret in centre of cockpit
- Standard German System replaced by 1 Dyneema mainsheet

### PACK DOWNWIND (Compatible with the 2 masts)

- 2 Additional halyard clutches to starboard
- 2 HARKEN Black Magic blocks for spinnaker sheet/code 0
- 1 HARKEN Black Magic block for spinnaker tackline with return on dedicated cleat in cockpit
- 1 Dyneema sheaved halyard with block for spinnaker or code 0
- 1 Dyneema halyard for spinnaker
- 1 Spinnaker tackline with return on dedicated cleat in cockpit

### STAYSAIL RIGGING PACK (Compatible with the 2 masts - Requires hydraulic unit option)

- 1 Clutch to starboard
- 1 Wichard double chainplate on forward deck for removable forestay
- 1 Dyneema halyard sheave with block for staysail

### SELF-TACKING RIGGING PACK (Compatible with all masts and all rigging packs)

- Self-tacking jib hardware (sheet only)
- 1 Self-tacking jib track with traveller
- 1 Jib sheet clutch to starboard

### CARBON MAST SAILS PACK

- Mainsail (91 m<sup>2</sup>/979 sq/ft) and Genoa (82 m<sup>2</sup>/882 sq/ft) North Sails NPL tour, dark grey
- Charcoal Grey lazy bag + lazy jack

### ALUMINIUM SAILS MAST PACK

- Mainsail (87 m<sup>2</sup>/936 sq/ft) and Genoa (82 m<sup>2</sup>/882 sq/ft) North Sails NPL tour, dark grey
- Charcoal Grey lazy bag + lazy jack

### MOORING PACK

- Delta 32 kg/71 lbs anchor (galvanized steel)
- Chain (Diameter: 12mm /  $\frac{1}{2}$ " - Length: 40m / 131')
- Line (Diameter: 22mm /  $\frac{7}{8}$ " - Length: 50m / 164')
- 6 Fenders:
  - 4 XL (Diameter: 300mm / 12" - Length: 880mm / 2'11")
  - 2 L (Diameter: 250mm / 10" - Length: 700mm / 2'4")
- 4 Moorings lines (Diameter: 18mm /  $\frac{11}{16}$ " - Length: 15m / 49'3")

### MOORING PACK (inflatable)

- Delta 32 kg/71 lbs anchor (galvanized steel)
- Chain (Diameter: 12mm /  $\frac{1}{2}$ " - Length: 40m / 131')
- Line (Diameter: 22mm /  $\frac{7}{8}$ " - Length: 50m / 164')
- 6 Fenders (Diameter: 360mm / 1'2" - Length: 1 200mm / 3'11")
- 4 Moorings lines (Diameter: 18mm /  $\frac{11}{16}$ " - Length: 15m / 49'3")



## OPTIONS

### NAVIGATION ELECTRONICS: B&G

- 4G Radar
- Chart table: 12" Zeus<sup>3</sup> wide wireless multi-function touchscreen
- H50 wireless VHF set
- Forward Scan Sensor (Forward underwater vision)
- AIS - NAIS 500

### RIGGING - SAILS

- FurlerBoom V-shaped boom furler, black lacquered, epoxy glassfibre casing/carbon spindle (requires carbon mast version + hydraulic unit option), Integrated LED lighting for the cockpit area
- Hydraulic unit (for carbon mast): Hydraulic textile backstay on piston + Hydraulic kicker tackle on unit (2 Functions / 2 speeds)
- Hydraulic unit (for aluminium mast): ROD rigging and hydraulic textile backstay on piston + Hydraulic kicker tackle on unit (2 Functions / 2 speeds)
- Electric Genoa furler below deck
- Aluminium black lacquered canoe boom with hydraulic piston, Sparcraft (Requires hydraulic unit option), Integrated LED lighting for the cockpit area
- Code 0 with North Sails NPL tour furler, laminated, dark grey for aluminium mast
- Code 0 for carbon mast

### WINCHES

- 2 Electric Harken Performa genoa sheet winches (H70.2 STPEH)

### HULL - DECK - COCKPIT

- Pearl grey gel-coat (Hull & Bowsprit)
- Blue grey gel-coat (Hull - Aft transom - Gunwale - Bowsprit) *Solid wood slatted side decks option required*
- Metallic hull paint (Hull - Aft transom - Gunwale - Bowsprit) *Solid wood slatted side decks option required*
- Retractable capstan (Bow)
- Canopy with LED lighting, Strataglass windows, Charcoal Grey
- Bimini Charcoal Grey (canopy option required)
- Bimini for helm stations, Charcoal Grey
- Sunshade for the cockpit, Charcoal Grey
- Sunshade on foredeck, Charcoal Grey
- LED lighting of spreaders
- Retractable stern thruster
- Carbon or white composite helm
- Retractable NOMEN black anodised cleats (in lieu of standard)
- Accommodation ladder
- Outboard engine bracket
- Polyester folding gangway (2,60m / 8'6")
- Electric inflator/deflator for tender and fenders (portable, battery-powered)
- Shore fresh water supply
- Seawater/fresh water deck washing pump
- 3 Underwater lights (1 forward, 2 aft)
- 1,20 m/3'11" carbon flagstaff (in lieu of standard)
- Tender launching system (Manual winch, 1 roller)

## INTERIOR EQUIPMENT

### LAYOUT VERSIONS

- 3 cabins 2 heads version
- 3 cabins 3 heads version
- Skipper cabin replacing the sail locker of the foredeck: Access through T70 deck hatch, Stainless steel ladder, 1 Berth, Toilet, Washbasin, Shower, 1 USB port dual port

### AMBIANCE

- Interior woodwork: Alpi oak 3 gloss + Alpikord oak floorings
- Internal upholstery according to colour chart: Fabrics, Leather, Nubuck, Ultraleather

### MULTIMEDIA

- TV pre-assembly on lifting system, in the saloon
- TV pre-assembly, in the forward cabin (on bulkhead)
- Hifi APOLLO + Bose 2.1 speakers, in the saloon (in lieu of standard)

### DOMESTIC APPLIANCES

- Dishwasher for 6 sets
- Built-in 22 L grill and microwave combined oven
- Wine cellar 23 bottles
- 3 kg washer dryer
- 36 L cool box with access from the galley work top, stainless steel tank (temperature adjustable from +10 °C to -12 °C)

### ON BOARD COMFORT EQUIPMENT

- Spring mattress in the aft cabins (thickness: 160mm / 6")
- Generator (7,5 KVA, 230V, 50Hz)
- Watermaker (60 l/h / 16 US Gal/h)
- Air conditioning 44 000 BTU (+ Shore socket extension cord 15m / 49'3") - 32A
- Forced air heating fuel
- Safe, in the forward cabin
- 12V / 230V inverter - 2 000 VA
- Electric battery switch (connected to the Ship Control, controls powering on or shut-off of batteries remotely)
- Lithium battery replacing the AGM batteries - Weight saving: Approximately 170 kg / 375 lbs (requires Comfort trim level)
- Seawater electric pump, in galley