

Privilege SIGNATURE 580



Specification – Galley down

Modern luxury combined with outstanding performance



Specification

Galley down

Total Sail area	213 m ²	2,292 sqft
Mainsail	121 m ²	1,302 sqft
Genoa	92 m ²	990 sqft
Staysail (option)	51 m ²	549 sqft
Gennaker (option)	176 m ²	1,894 sqft
Mast length	27.57 m	90'45"
LOA	18.65 m	61'2"
Hull length	17.90 m	58'72"
LWL	17.98 m	58'98"
Beam	9.18 m	30'1"
Draft	1.75 m	5'9"
Displacement light ship	29 t	63,934 lbs
Displacement full load	35 t	77,162 lbs
Fuel tank	1000 l	264 gal
Fresh water	1000 l	264 gal
Engine Diesel	2 × 55 kW	2 × 75 HP
Cabins	3 or 4	
CE Certificate	A -12	
Design	Cabinet Marc Lombard	
Interior	Darnet Design	

All measurements are approximate. Specifications and material can change without notice. Errors excepted. Valid 2019.08.01



Specification

Galley down

General

- › P580 Signature with galley down, 1 master cabin, 2 guest cabins and 1 crew quarter
- › Declaration of Conformity according to European Directive 2013/53/UE
- › 5 years structural guarantee on hull, deck and bulkheads
- › Owner's manual
- › Administration fees

Hull

General

- › Hulls and bridge deck infused with closed cells PVC foam core
- › Isophthalic gelcoat – colour: Signal White, RAL 9607
- › 1st layer in vinyl ester resin to prevent osmosis
- › Polyester resin for infusion

Structure

- › Monolithic areas and plywood/ aluminium reinforcements under infusion

Bulkheads

- › Structural bulkheads infused with closed cells PVC foam core
- › Bulkheads directly laminated to hull and bridge deck

Additional parts

- › Crash boxes at false bow

Keel

- › Structural keels, integrated to the hulls

Deck

General

- › Deck infused with closed cells PVC foam core
- › Isophthalic gelcoat – colour: Signal White, RAL 9607
- › 1st layer in vinyl ester resin
- › Polyester resin for infusion
- › Aft cockpit with L-shape bench on starboard and straight benches on portside and on aft beam

- › Forward cockpit with 2 benches, accessible from saloon and master cabin through watertight doors

Structure

- › Monolithic areas and plywood/ aluminium reinforcements under infusion
- › Deck laminated to hull and bulkheads laminated to deck

Deckhouse

- › Large coachroof with 2 ventilation hatches
- › Raised helm station on portside with double bench, 1 locker and 1 bag for halyards

Flybridge

- › Flybridge with large U-bench

Additional parts

- › 1 locker on port foredeck, accessible through deck hatches with ventilation and ladder, lockable
- › 1 locker on starboard foredeck, accessible through deck hatch with ventilation and ladder, lockable (not with X1000-2 or X6220-1)
- › 2 lockers on central pod accessible through deck hatches with ventilation and ladder, lockable
- › 1 locker for anchoring storage
- › 1 locker in aft cockpit for storage of 2 propane gas bottle 13 kg
- › 7 aft cockpit lockers incl. one for life raft
- › 2 cockpit lockers in the aft beam
- › 1 forward cockpit locker
- › 2 lockers in the flybridge benches

Rigging

Standing rig

White lacquered aluminium mast 23.90 m high with:

- › 3 sets of spreaders with leather protection
- › Mainsail track with ball bearing sliders
- › 3 retractable steps to gooseneck, footrest at gooseneck, 2 retractable steps at masthead
- › LED tricolour navigation light at masthead, steaming light, anchor light, fixed deck light in front of the mast
- › Mechanical wind vane at masthead

Specification

Galley down

White lacquered aluminium boom with:

- › Sheaves for reef-lines
- › Mainsail outhaul on fixed points

White lacquered aluminium welded crossbeam with seagull striker

Stainless steel 1x19 wire incl. forestay, inner forestay, 2 lower shrouds, 2 upper shrouds and 4 diamonds

Sails and running rig

High performance running rigging with Dyneema core:

- › 1 halyard for mainsail, genoa and staysail
- › 1 sheet for mainsail and 2 sheets for genoa
- › 1 genoa furling line
- › Reefing lines, lazy jacks and topping lift

High quality sails with:

- › Roach mainsail 121 m², 3 reefs, full batten, Dacron
- › Genoa on manual furler, 96 m², with UV leech guard, Dacron

Deck hardware

- › 1 electric primary winch at helm station
- › 1 electric sheets winch at helm station
- › 1 electric mainsail winch on aft helm station
- › Mainsheet traveller with double ball bearing car and control line
- › Manual furler for genoa
- › 2 tracks for genoa/ staysail incl. cars with stop pins
- › 3 winch handles with holders

Exterior equipment

Glazing

- › Patio door to saloon with 3 leaves, 2 sliding and mineral glass folding window on starboard
- › Watertight door from saloon to forward cockpit (not with X5320-3)
- › Watertight hatch from master cabin to forward cockpit (not with X5320-3)
- › Large mineral glass windows on hull and deckhouse
- › Flush hatches on deck and deckhouse

Mooring – Anchoring

- › 8 stainless steel mooring cleats, 500 mm 4 pcs., 360 mm 4 pcs.
- › 8 stainless steel anti-chafing protections
- › 2 stainless steel mooring cleats, 360 mm, at transom
- › 4 mooring lines
- › 10 fenders, 107 cm x 46 cm, 8 pcs., 74 cm x 61 cm, 2 pcs.
- › 1 electric anchor windlass 2000W with deck switch and wired remote control with chain counter, gypsy Ø 12 mm
- › Bow anchor roller with cleat
- › Mooring bridle
- › Stainless steel plate to prevent anchor chain chafing
- › Main mooring line with galvanized Delta-Anchor 50 kg, swivel, 75 m galvanized chain Ø 12 mm, 25 m rope

Deck fitting

Deck

- › 2 stainless steel pulpits with teak seats, LED navigation lights
- › Railing, 750 mm height incl. stanchions and 3 guard lines in stainless steel
- › 2 white PVC coated nets 1000 g/m²
- › 2 handrails on deckhouse
- › 3 lifelines in stainless steel, 2 on the deck, 1 on the deckhouse
- › Stairs from cockpit to side deck
- › Stainless steel handrail in front of the mast

Forward cockpit

- › Removable teak coffee table
- › Stairs from forward cockpit to forward beam

Aft cockpit

- › Fixed teak dining table
- › Stairs from cockpit to helm station

Helm station

- › Seat with footrest
- › Stairs from helm station to flybridge
- › Windscreen in plexiglass with stainless steel frame

Specification

Galley down

Flybridge

- › Fixed teak coffee table

Transoms

- › Removable stainless steel swimming ladder with 2 support and 1 deck shower on each transom
- › 1 stainless steel handrail on each exterior coamings
- › 1 stainless steel handrail on each interior coamings

Upholstery

- › Upholstery for aft cockpit, forward cockpit and flybridge – Silververtex 122-0001 Macadamia

Interior

General

- › Furniture – Alpi Walnut style, satin varnish
- › Floorboard – laminated wood Resopal Valley Oak
- › All worktops in synthetic resin – Solid range S028 Alpine White
- › Upholstery – Silververtex 122-0001 Macadamia
- › Lining ceiling and wall: Spradling Hitch Iceberg 8962, except center saloon ceiling in Spradling Silververtex Ice 4004
- › Lining bed frames, headboards and bedsides: Spradling Vogue Eucalyptus 004
- › White solid surfaces: Duropal Cristal White U11027 SM
- › Dark solid surfaces in saloon: Egger Graphite Grey U961 STPT
- › Light solid surfaces in saloon: Duropal U12168 XM, Spradling Vogue Eucalyptus 004
- › Curtains type OCEANAIR in all the boat
- › Spring frames and mattresses for all the beds

Front port side – master cabin with:

Fwd

- › 1 separate electric toilet with washbasin and mixing tap

Outer side

- › 1 large cabinet with 2x2 doors and shelves in between

Inner side

- › 1 transverse double bed 175 cm x 200 cm
- › 1 access to forward cockpit

Corridor – Outer side

- › 1 separate head with washbasin, mixing tap, mirror and accessories
- › 1 separate shower with thermostatic tap and silk-screened door

Corridor – Inner side

- › 1 full height wardrobe

Front starboard side – according to layout

Crew quarter with:

Fwd

- › 1 single bed and wardrobe

Outer side

- › 1 chest of drawers with sliding dining table

Inner side

- › 1 separate head with electric toilet, shower with thermostatic tap, washbasin with mixing tap, mirror and accessories

Port corridor – according to layout

Outer side

- › Decorative panel in 3 parts covered with Spradling Vogue Eucalyptus

Inner side

- › 1 tall storage cabinet

Starbord corridor – according to layout

Outer side

- › 1 gas cooker 3 burners
- › 1 gas oven
- › 1 storage for built-in dish washer, 9 dishes in option
- › 1 storage for stainless steel fridge 182 l, 2 drawers in option
- › 2 sinks with mixing tap
- › Worktop in synthetic resin
- › Numerous storages and drawers

Inner side

- › 1 stainless steel fridge 160 l
- › 1 stainless steel freezer 130 l
- › 1 storage for built-in microwave in option

Specification

Galley down

- › 1 tall storage cabinet for washer/dryer in option
- › Worktop in synthetic resin
- › Numerous storages and drawers

Aft port side – guest cabin with:

Aft

- › 1 transverse double bed 160 cm x 200 cm with 2 bedsides

Corridor – Outer side

- › 1 separate shower with thermostatic tap and silk-screened door
- › 1 separate head with electric toilet, washbasin, mixing tap, mirror and accessories

Corridor – Inner side

- › 1 full height wardrobe

Aft starboard side – guest cabin with:

Aft

- › 1 transverse double bed 160 cm x 200 cm with 2 bedsides

Corridor – Outer side

- › 1 separate shower with thermostatic tap and silk-screened door
- › 1 separate head with electric toilet, washbasin, mixing tap, mirror and accessories

Corridor – Inner side

- › 1 full height wardrobe

Salon – according to layout

Navigation area with:

- › 1 chart table with helm seat
- › 1 sideboard for receiving electronics, monitoring and entertainment
- › 1 adjustable LED light

Dining area with:

- › 1 L-shape bench
- › 1 fixed rectangular dining table
- › 1 TV furniture, 1 modular cupboard behind the fixed leave of the patio door

Lounge area with:

- › 1 L-shape bench
- › 1 coffee table

Systems

Air

Air conditioning

- › A/C system predisposition for future chiller, power and sea water connection, handlers, power and chilled water/glycol circuit, insulation hoses

Electrics & electronics

General

- › 24Vdc network
- › 230Vac, 50Hz network
- › Supervision system management with controller for data capture and 2 touch screens to check, 10" at chart table, 5" in master cabin: AC/DC networks, gauges & pumps, lighting, service switches, alarms

Wiring & control boxes

- › Set of control boxes distributed within the boat incl. breakers and control relays
- › Shore power outlet 230Vac, 50Hz, 32A with shore cable

Batteries & chargers

- › 2 service LITHIUM-ION batteries 180Ah, 24Vcc
- › 2 batteries 75Ah, 12Vcc for engines
- › 1 battery 75Ah, 12Vcc for generator
- › 2 battery chargers 100A, 24Vcc
- › 1 Inverter 4000W, 230Vac

Generator

- › Generator power to be defined according to energy needs and/ or navigation program

Lighting

- › LED downlights daylight divided into the boat incl. aft cockpit, white and red in saloon and aft cockpit
- › LED downlights daylight under the boom for flybridge, white and red

Specification

Galley down

- › LED floodlights daylight for forward cockpit
- › LED reading lights daylight divided into the cabins
- › 1 flexible reading light at chart table
- › 3 LED lights on each transom

Electric devices

- › 230Vac, 50Hz circuit with 1 outlet in each cabin, 2 in the master cabin, 2 in the galley, 2 in the saloon and 2 at chart table = 11
- › Twin USB charging at chart table

Navigation instruments

- › 2 Raymarine i70s at helm station with DST transducers for depth/speed/temperature/wind
- › GPS Receiver RS150
- › VHF antenna, 2 Ray 90 at helm station & chart table
- › Magnetic compass, northern hemisphere
- › Mechanical wind vane

Entertainment

- › Hertzian masthead antenna
- › AM/FM Antenna
- › Prewiring TV and Hifi in saloon and cabins

Propulsion

- › 2 sound-proof and heat insulated engine compartments, ventilation fans, LED lights with access from cockpit by hatches
- › 2 Yanmar engines, saildrive 80 hp, with electric throttles incl. maintenance kit
- › 2 additional alternators 24Vcc, 110A
- › 2 propellers

Steering

- › Hydraulic steering system
- › Stainless steel steering wheel Ø 900 mm with leather cover
- › 2 stainless steel emergency tillers

Water & gas system

- › 2 fresh water tanks, 2 x 450 l
- › 2 x 40 l hot water boiler 230V
- › Pressurized water system incl. 2 twin pumps and 1 expansion tank

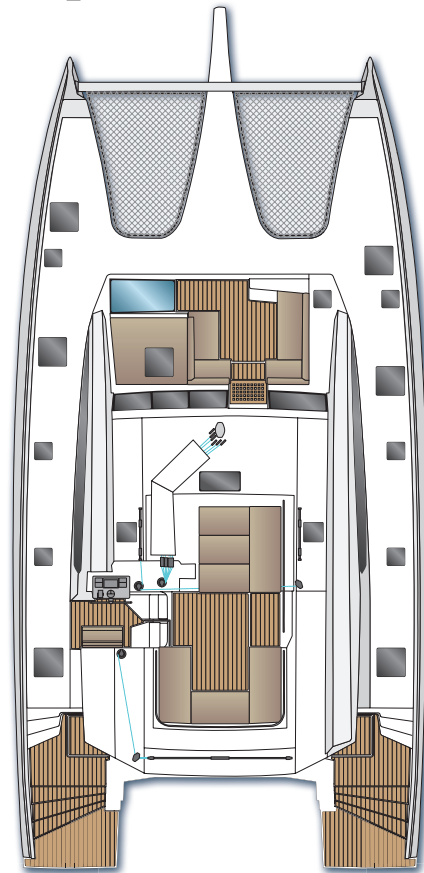
- › 2 manual bilge pumps with 3-way-valve
- › 4 electric bilge pumps with visual and audible alarms
- › Electric shower pumps
- › 2 blackwater tanks, 2 x 215 l
- › 2 greywater tanks, 2 x 390 l
- › Mixing taps for heads and showers
- › Electric toilets with fresh water flush
- › Warm/cold water deck shower on each transom

Fuel

- › 2 fuel tanks, 2 x 485 l

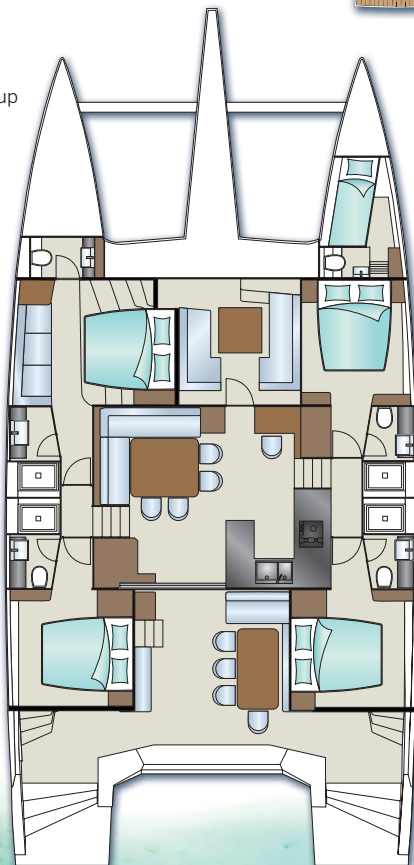
Deck & cabin concept

Maindeck



Lower deck

Gallyey up



Galley down

