

SWAN 48





**NAUTOR'S
SWAN**

Heritage

For Nautor's Swan, 48 is a magic number. One of the most iconic Swans ever first appeared in 1971 under this number: the legendary Swan 48. Designed by Sparkman & Stephens of New York, one of the best yacht design studios of all time, this iconic yacht won some of the most prestigious offshore races, including the Bermuda Race and Transatlantic Race, and was selected for the Admiral's Cup - the "Formula One" race series of the time. "With many international races behind her - the Swan 48 is keeping up an irresistible challenge as a top-class ocean racer," says the original brochure. "With the speed of a bird of prey she combines the luxury and grace that make her the swift, smooth-going Swan of tomorrow. The Swan 48 is equipped to the highest professional standards and the woodwork has the class given it by the Nautor specialists, men who have learnt their crafts around the Gulf of Bothnia, where woodwork and shipbuilding skills are traditional. The unique design and professional skills behind the Swan 48 make her the complete ocean cruising racer." Racing, however, was not the main purpose of the boat: like any Swan, she was designed to be a perfect family cruiser, capable of sailing around the world in total safety and comfort. A total of 48 units were sold during five years of production. In 1995 Germán Frers designed a new Swan 48, following the same design principles and with the same level of grace and performance as the original. With 57 units built, it proved to be another success story and is still beloved and highly regarded on the brokerage market. Today, almost forty years after the original Swan 48, the legend lives on in a third interpretation...

SWAN 48





Design Germán Frers



“Like every design coming from our drawing board, the new Swan 48 has been designed with heart and passion. But rather than acting on a flash of inspiration, this new Nautor model is the result of a rational brief based on market analysis and the experience of the builder, agents and designers, coordinated by Nautor’s Product Line Leader. One can safely say the Swan 48 is a new model created by a team of experts that offers the best equipment and material specifications and solutions on the market. The equipment and tanks are low down in the bottom of the hull and close to the longitudinal centre of buoyancy. The angle of positive stability is in the order of 120 degrees. The displacement reflects the quality of the construction and the equipment dedicated to provide optimal comfort on board. Safe and a pleasure to sail, the yacht will have an easy motion at sea due to her stability and moderate ballast of the three keel options available (standard, shallow and racing). Following on from the latest larger

models, the deck beam has been carried all the way back to the transom. A shallow twin rudder arrangement, positive control and extra waterline length are some of the advantages of this design. The yacht has a generous, well-illuminated interior where every one of the three cabins and two bathrooms, which include separate showers, has been carefully developed in detail by the interior designer. On deck there are distinct areas for relaxing and sail handling. All halyards and sails are controlled from the cockpit and the tails stowed in dedicated bins. Protection from the elements is provided by the dodger in combination with the bimini top. The lazarette is large enough to stow a fully inflated 2.8-metre tender. For those interested in racing at the Corinthian level, there is a performance package available from Nautor that includes a racing keel, a square top mainsail, carbon fibre mast and rigging, bowsprit, and upgraded deck gear”.

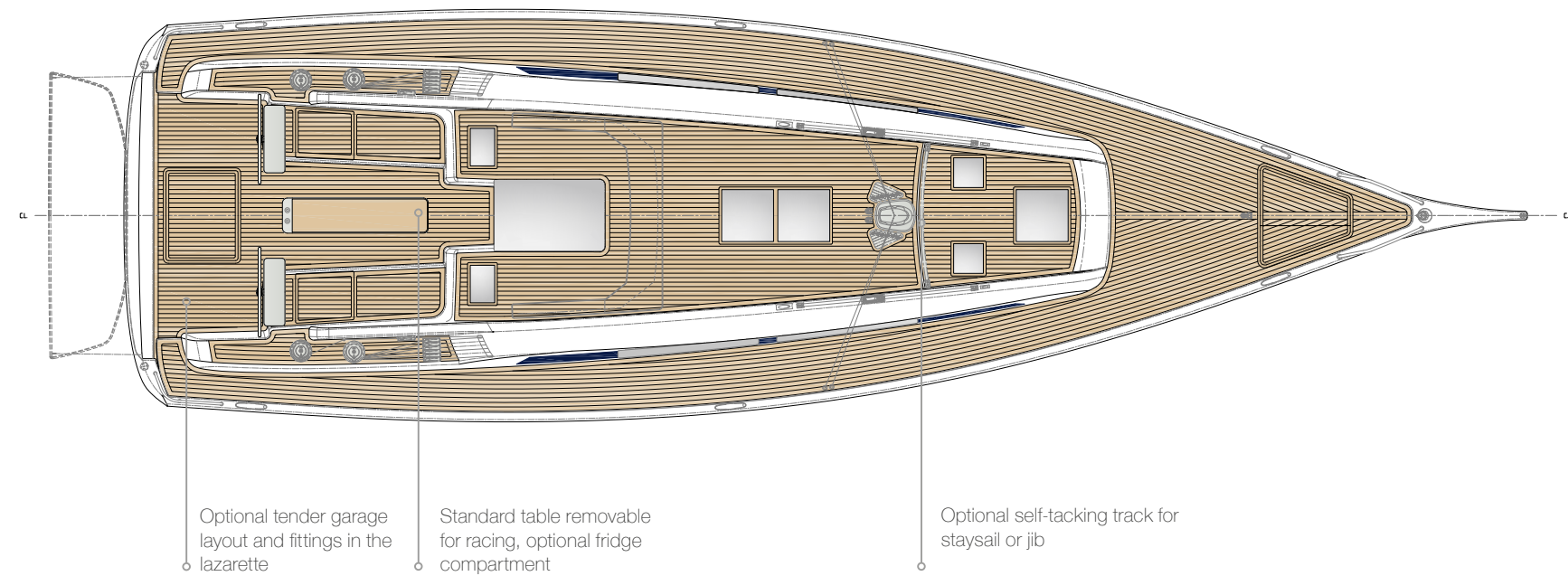
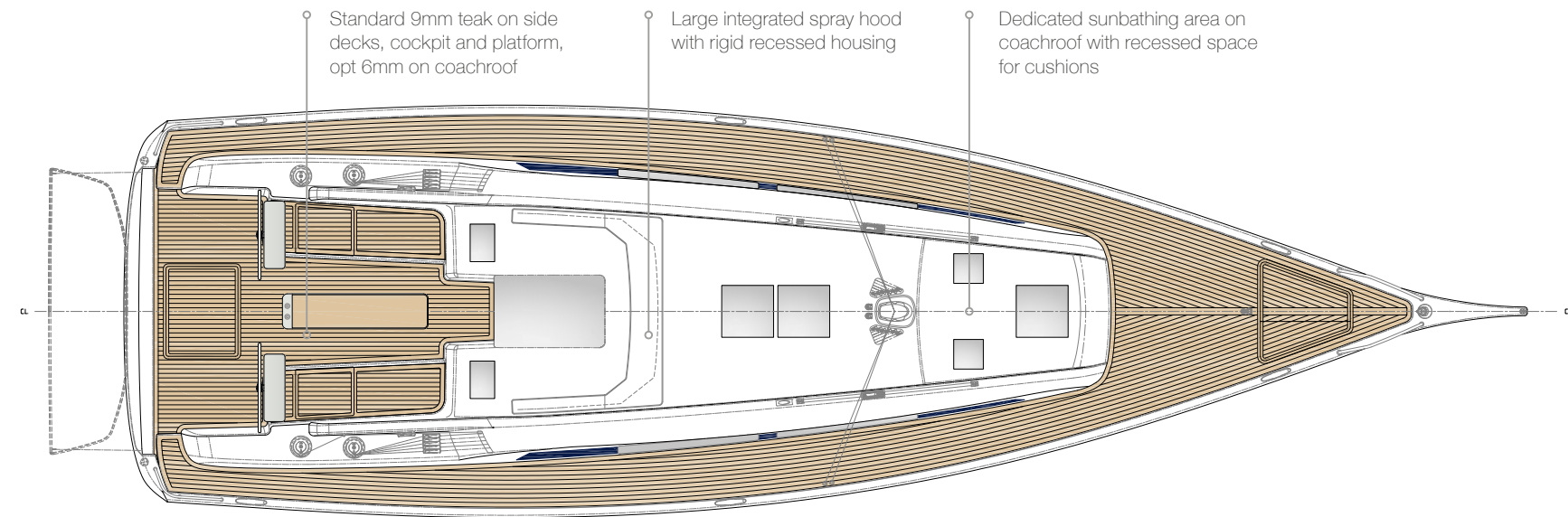
SWAN 48



Deck

The deck plan has been designed for maximum efficiency, safety and comfort. The deck design, particularly the coachroof, is the most relevant part of a boat in terms of aesthetics and character. At Nautor we have always paid close attention to this aspect and the 'wedge' coachroof design has been a brand hallmark since its introduction in 1971 with the original S&S-designed Swan 48. The design of the new Swan 48 represents the latest generation of wedge coachroof to evolve from that original design. It is designed with a combination of soft curves and faceted surfaces, presenting a new style but still in the family feeling of her bigger sisters, the Swan 65 and 78. It also introduces the 'Eagle's Eye' feature, a long brow that gives the whole coachroof the appearance of a raptor's intense gaze. The cockpit, well protected by deep coamings along its length, has Swan's typically functional layout with a forward area dedicated to guests, that is fully protected by spray hood and bimini, a central section where all sailing gear is concentrated with winches within easy reach of the helmsman, and an aft area dedicated to sunbathing and direct access to the sea via the opening platform. Safety is always a priority on a Swan. To this end, a special solution for the main sheet has been developed to prevent the sheet crossing the whole cockpit and reduce the danger from an accidental jibe. As an option, the platform can also provide access to the tender garage. Other areas, like the forward sunbathing area with cushions well integrated into a recessed part of the coachroof, are dedicated to comfort at sea.



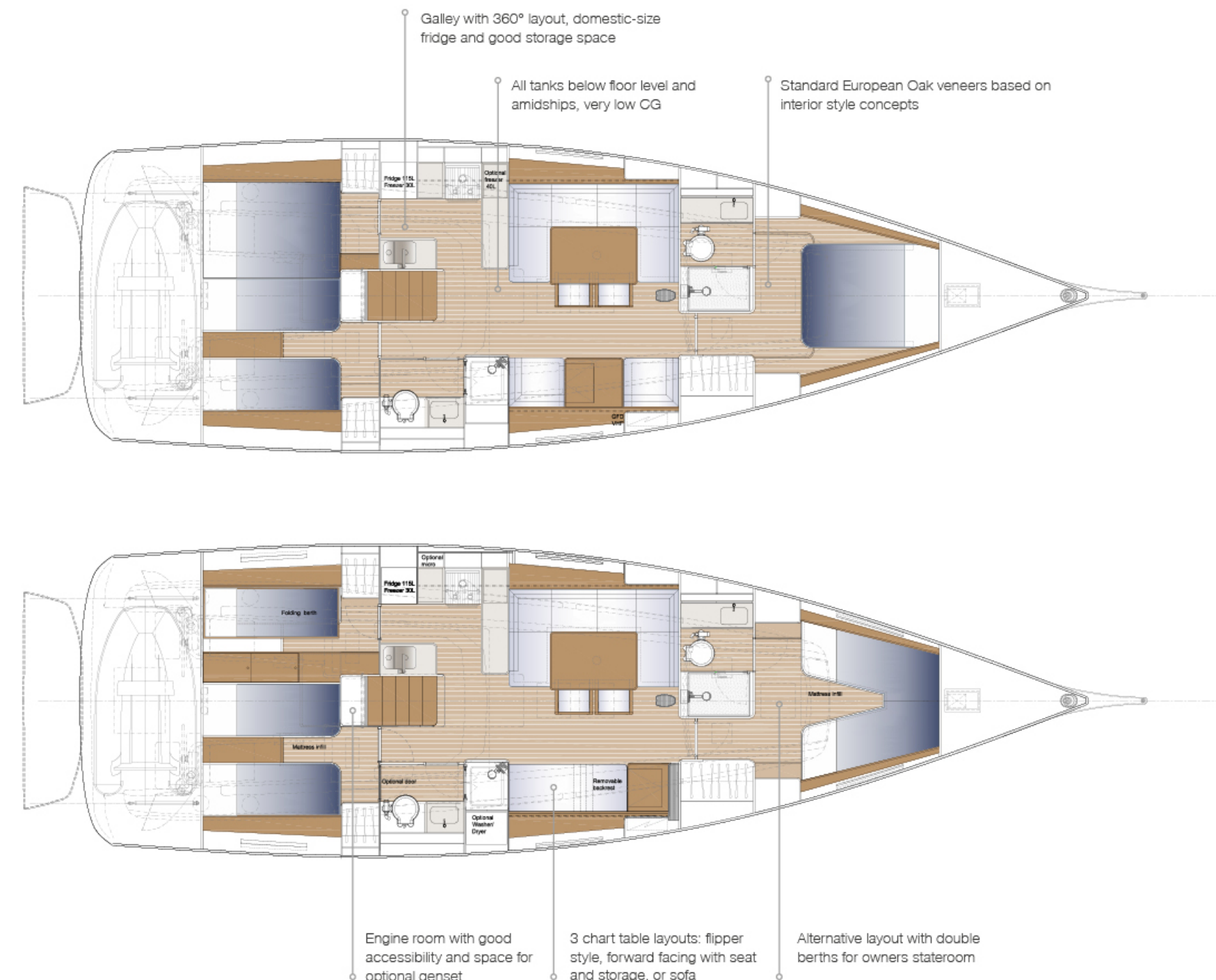




Interiors

With its classic style and grace, the new Swan 48 has an interior arrangement that offers abundant space and volume. The three-cabin layout comprises an owner's cabin forward with a private head (a forward window for extra light is an option), a VIP cabin to starboard and a portside guest cabin, both aft. The two heads are comfy and spacious with room for independent shower stalls. The open-space main saloon is located at the centre of the boat and furnished with a C-shape sofa and plenty of natural light to illuminate the whole space. The chart table on the starboard side is available in three different layouts: 'flipper' style (with a table that can be lowered to create a long sofa/navigation berth), forward facing with seat and storage, or with table and sofa. In terms of decor and finishing, the new Swan 48 is available in three different styles proposed by our interior designer Misa Poggi: Swan Soul that embodies the typical brand style, Scandi Vison inspired by Scandinavian design, and Velvet Vibe that reflects the warm ambience of the Mediterranean. Each style carefully balances the relationship between elements and materials to create a special atmosphere and energy. The galley configuration offers freedom of movement and is equipped with a domestic-size fridge and valuable storage space. The soundproofed engine room has good accessibility and includes a dedicated space for an optional genset.







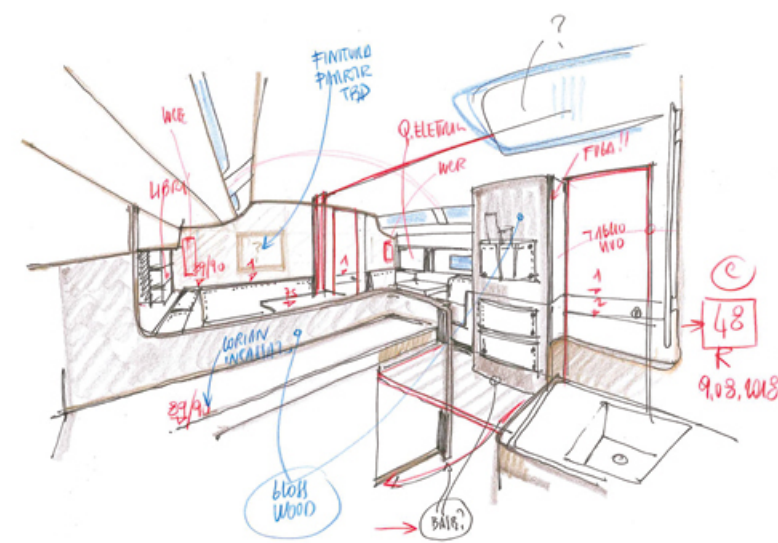
Swan Soul
(STD)



Scandi Vision
(OPT)



Velvet Vibe
(OPT)



Moods Misa Poggi



"Working on the interior of a Swan yacht means creating a special atmosphere for onboard comfort and contentment and a reciprocal enrichment beyond the practicalities of place, function and space, always involving Finnish passion for excellence."

The process for producing a sense of intimacy combined with the necessary seamanlike features is a multi-faceted one that enriches itself thanks to the collaboration of the great expertise of the Nautor's Swan team, our technicians and, of course, evaluating the dreams of Swan enthusiasts. The atmosphere onboard and its energy are determined by the relationship between spacial elements and materials. Nautor's Swan materials are chosen carefully and tested by the whole team to guarantee their best performance in all the challenging areas of the sailing context."

SWAN 48

Woods

Swan Soul



Natural European Oak Varnished

Natural European Oak with light stripes Varnished

Scandi Vision



Dark Oak Varnished

European Oak White treatment Varnished

Velvet Vibe



American Walnut Varnished satin

American Walnut Varnished glossy finish



Walnut Light stripes varnished

Décape Oak white treatment varnished



All moods. Fabrics and leather

Swan Soul suggested



Caleido Taupe 11309



Optional throwpillows
Caleido Taupe 11309



Caleido White 10995



Cognac Leather SILK 0250



Optional Nougat Brown
Leather SYDNEY 5529

Scandi Vision suggested



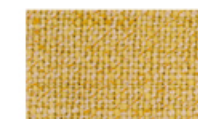
Caleido Sky Blue 3582



Linosa 11032



Caleido White 10995



Optional throwpillows
casual gold 27



Optional Whiskey
Leather SILK 0551

Velvet Vibe suggested



Caleido Jeans 3585



Optional throwpillows
Caleido Jeans 3585



Caleido Light Jeans 11411



Caleido White 10995



Caleido Chili Red 2598



Caleido Red Velvet 3026



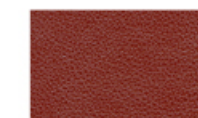
Caleido White 10995



Optional Nature Leather
SYDNEY 3394



Optional Sea Blue Leather
SILK 0779

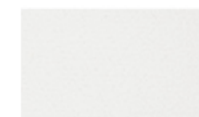


Optional Oxblood
Leather

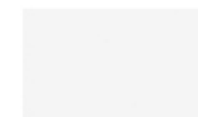


Optional Chestnut
Leather SILK 0229

All moods



Caleido White 10995



Corian Glacier White



Sailing

Drawing on long experience of designing large yachts, the naval architecture of the new Swan 48 takes advantage of the thousands of miles sailed all over the world by her bigger sisters. The hull form combined with the keel ballast provides a high righting moment for performance under sail, comfort at sea and liveability both on deck and inside the yacht. The hull lines have been optimised for maximum performance heeling of no more than 20 degrees, so the yacht remains comfortable and fully liveable at sea in any conditions. The twin rudder configuration enhances the balance of the boat, preventing any tendency to broach, and provides the helmsman with good feedback and sailing pleasure while heeling. At the same time, the reduced draft of the double rudder blades and modest draft of the T-shaped keel increase cruising capability by allowing access to shallow waters and harbours. For racing enthusiasts, the new yacht is true to Swan's winning heritage. The waterlines are designed with performance in mind and the full package is set up for getting the best out of the boat even by a non-professional crew. For speed lovers, a Performance Package is available as an option.

SWAN 48





NAUTOR'S
SWAN

Construction

- Glass and foam core sandwich
- Vinylester resin
- Vacuum infusion, postcured
- Gelcoat finishing
- 2 composite 100% watertight bulkheads
- Standard 9 mm teak on sideways, cockpit and platform
- Maxi style toerail, with space for principal deck gear
- Massively constructed, oversized bottom structure
- All tanks and most of the loads on the bottom of the boat
- Carefully assembled, accessible in every part, no compromise on quality
- Standard interior in European Oak

SWAN 48

Details



Standard Specification

Dimensions

LOA	14.78 m	48.49 ft
LWL	13.88 m	45.53 ft
Beam max	4.59 m	15.06 ft
Draught (light)	2.40 m	7.87 ft
Displacement (light)	15,000 kg	33,070 lbs
Ballast, standard keel	5,200 kg	11,465 lbs
Engine Volvo D2-75 Saildrive	55 kW	75 Hp

Rig and sail dimensions

IG	20.80 m	68.24 ft
J	5.66 m	18.57 ft
P	19.90 m	65.29 ft
E	6.60 m	21.65 ft
TPS	6.95 m	22.80 ft

Sail areas

Fore triangle	58.9 m ²	633 sq.ft
Main sail	77.1 m ²	830 sq.ft
Jib	62.5 m ²	673 sq.ft
Gennaker	216.7 m ²	2333 sq.ft

Tank capacity

Fuel	360 l	95.10 Usg
Water	500 l	132 Usg
Hot water	40 l	10.60 Usg
Holding tanks	100 l	26.40 USg

Battery & power sources

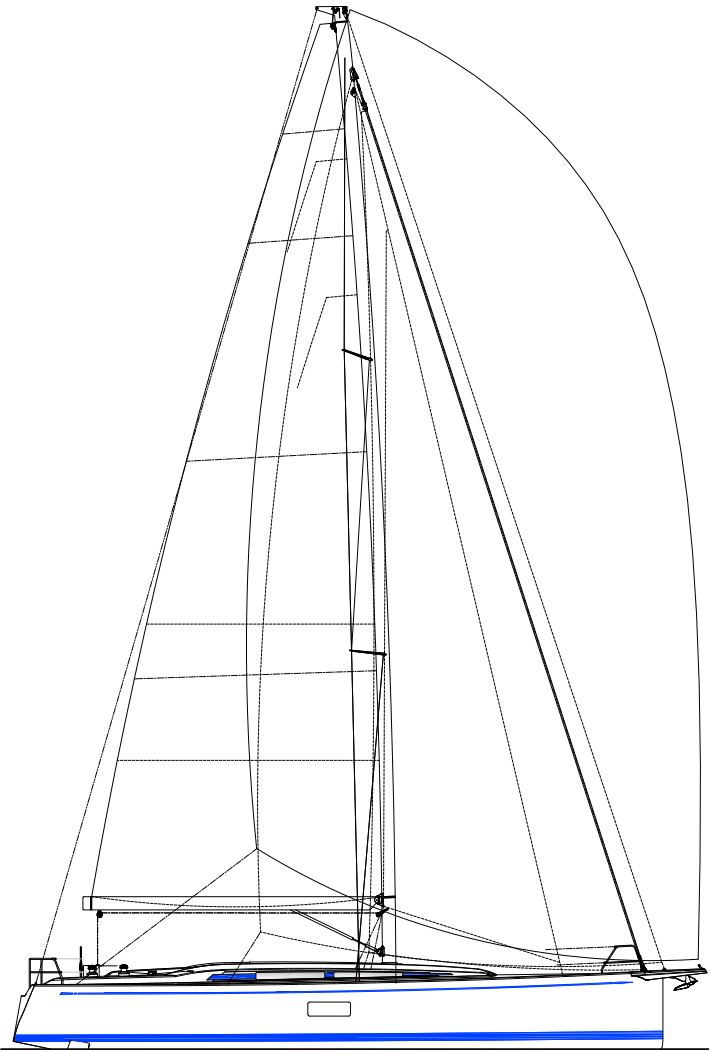
Service battery, AGM	24 V 230 Ah
Shore power	230 V 32 A 50 Hz
Battery charger	70 A

Naval Architect

German Frers

Construction Approval

CE-approval: Category A Ocean





This catalogue contains non-contractual descriptive information about Nautor's Swan yachts including drawings, photographs as well as other data. All such information is subject to change at any time without prior notice and does not represent an exact description of any particular yacht. Photos or diagrams could include special equipment that is not part of the equipment supplied by the boatyard. All the information, figures, photographs and data provided in this catalogue are exclusive copyright, industrial property right and property of Nautor's Swan.

