

# BOESCH 620 ACAPULCO DE LUXE

*Boesch*

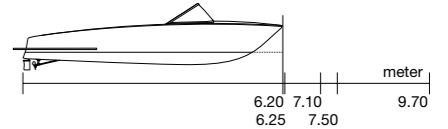


HORIZON GLIDING®



# BOESCH 620 ACAPULCO DE LU XE

Compact, fast and agile



## OVERVIEW

### A lightweight with a lot of power

The Boesch 620 Acapulco De Luxe defines an extremely successful type of boat. Due to the Boesch Laminate Technology it has a low weight. However, the standard version is propelled by a powerful V-8 gasoline engine of 320 HP. Therefore, the Boesch 620 Acapulco De Luxe is extremely agile and fast. This is the reason why this boat is very popular among water skiers all over the world. Thanks to the Boesch Horizon Gliding principle, the boat already starts to plane at low velocities on its nearly flat keel and has then an almost perfect stern wave. Another plus factor is, that the engine technology with its reduced emission leads to a lower fuel consumption. The Boesch 620 Acapulco De Luxe is a boat, which enthruses with its generous comfort and its breathtaking elegance combined with the most modern techniques of boat building.

### Boesch 620 Acapulco De Luxe Electric Power

Even with the electric-power engine, the Boesch 620 Acapulco De Luxe has enough power to tow a water skier. The Boesch Electric Power fleet is equipped with a propulsion of 50 kW. However it is possible to install electric motors with 80 kW or 100 kW propulsion power. The energy content of the batteries is either 62.6 kWh or 75.2 kWh.

## MEASUREMENTS AND WEIGHTS

Length (hull)	6.20 m
Length (over all)	6.50 m
Beam (hull)	2.15 m
Beam (over all)	2.20 m (rubbing strake)
Draft	0.54 m
Weight	1350 kg
Load capacity	6 persons
Fuel tank	120 l
CE design category	C

## ENGINE PERFORMANCE

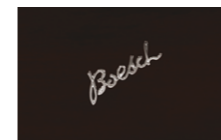
Maximum speed: 70 km/h (38 kn)

## ENGINES

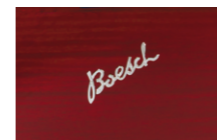
Standard	Gasoline engine V-8 5.7 l (electronic injection), 239 kW (320 HP), certified for CH + EU directive 2013/53
Gearbox	ZF63A gear reduction ratio 1,22:1



Horizon Gliding



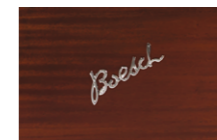
dark brown



red



brown



light brown

## COLOR OPTIONS

Since mahogany is a natural product, the colors may differ slightly from the example shown.

## ELECTRIC POWER ENGINES

Standard	Piktronik synchronous motor with 50kW power output, 216V operating voltage, lithium polymer accumulators with 216V and 174 Ah capacity. <b>New: energy content 37.5 kWh</b>
Option 1	Piktronik synchronous motor with 80kW power output, 360V operating voltage, lithium polymer accumulators with 360V and 174 Ah capacity. <b>New: energy content 62.6 kWh</b>
Option 2	Piktronik synchronous motor with 100kW power output, 360V operating voltage, lithium polymer accumulators with 360V and 209 Ah capacity. <b>New: energy content 75.2 kWh</b>

## BATTERY OPTIONS

Standard	37.5 kWh (50 kW), 62.6 kWh (80 kW), 75.2 kWh (100 kW)
Option	50.1 kWh (50 kW), 83.5 kWh (80 kW), 83.5 kWh (100 kW)

## ELECTRIC POWER PERFORMANCE

Maximum speed 50 kW: 42 km/h (23 kn)
Maximum speed 80 kW: 50 km/h (27 kn)
Maximum speed 100 kW: 55 km/h (30 kn)

## RANGE WITH FULL PLANNING VELOCITY OF 40 KM/H

50 kW propulsion / 50.1 kWh batteries: 55 minutes (at almost max. speed)
80 kW propulsion / 83.5 kWh batteries: approx. 1 <sup>1/2</sup> hour (full planning)
100 kW propulsion / 83.5 kWh batteries: approx. 1 <sup>1/2</sup> hour (full planning)



Stowage for everything you may need on board.



The handcrafted instrument panel is a typical example of the Boesch quality.



Thanks to the L-shaped bench up to six persons can sit comfortably in the cockpit.





*Boesch*

**HORIZON GLIDING®**

BOESCH MOTORBOOTE AG

Seestrasse 197, P.O. Box 529 - 8802 Kilchberg/Zürich, Switzerland

T: +41 44 711 75 75 F: +41 44 711 75 76 [info@boesch-boats.ch](mailto:info@boesch-boats.ch) [www.boesch.swiss](http://www.boesch.swiss)

