



from
ITALY



with
LOVE

ABSOLUTE 64^{FLY}









Confort







ABSOLUTE 64™





Confort
and simplicity

the true
italian style

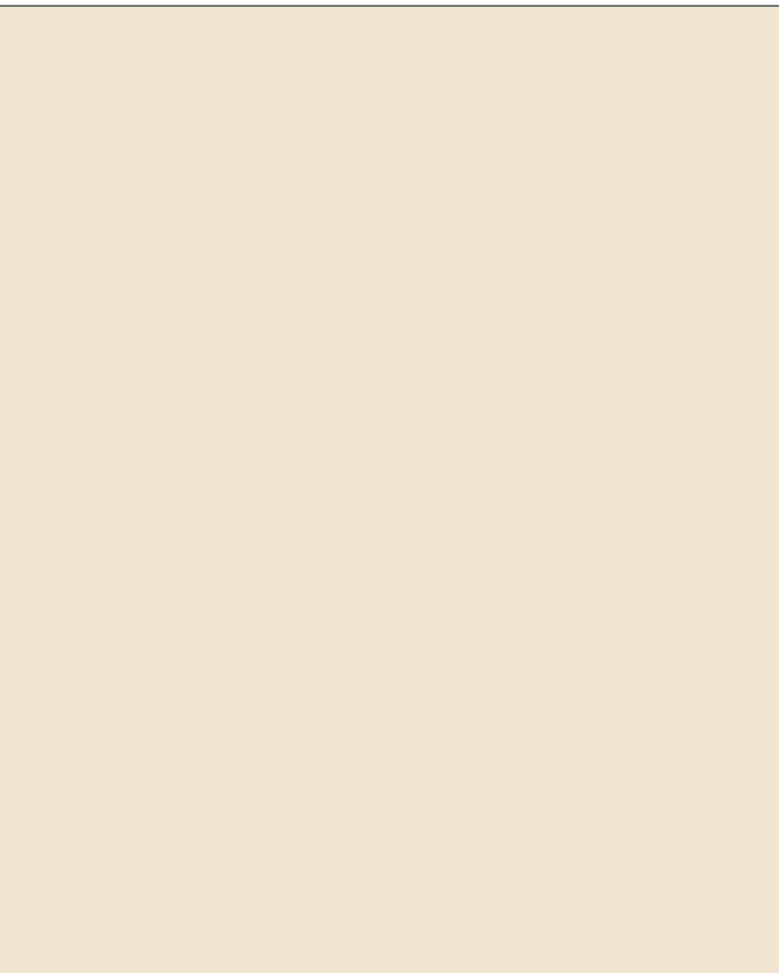




il vero stile
italiano







Confort
e semplicità





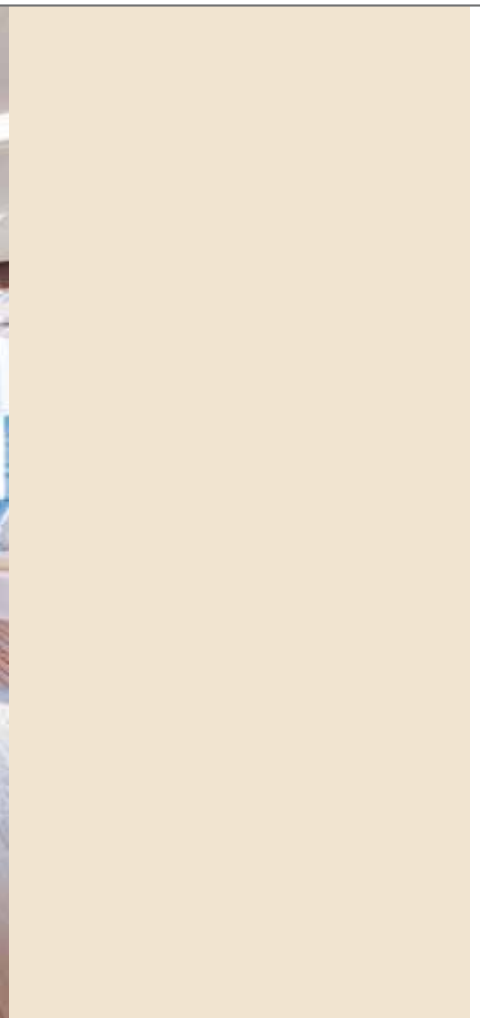


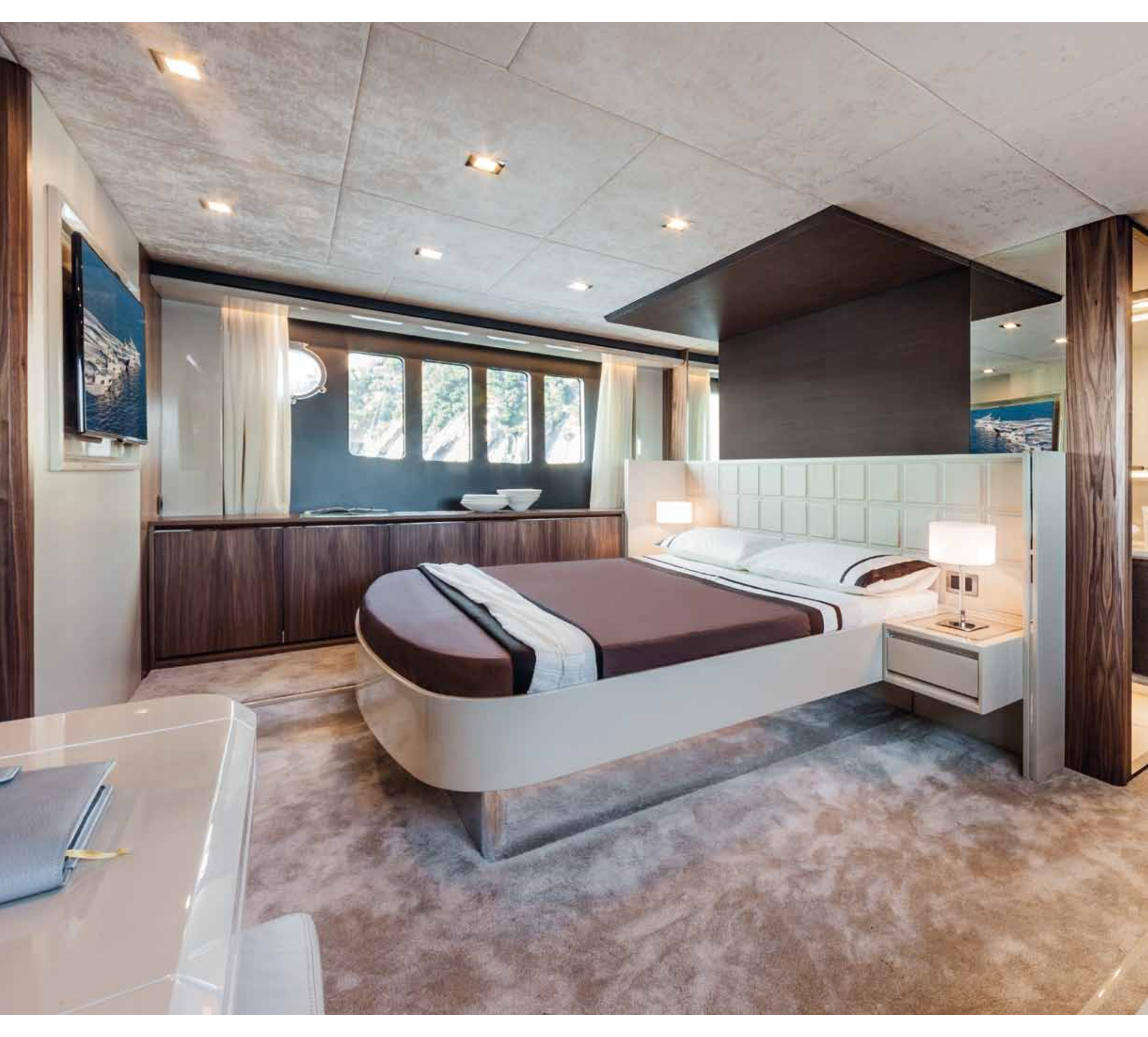
Space and freedom

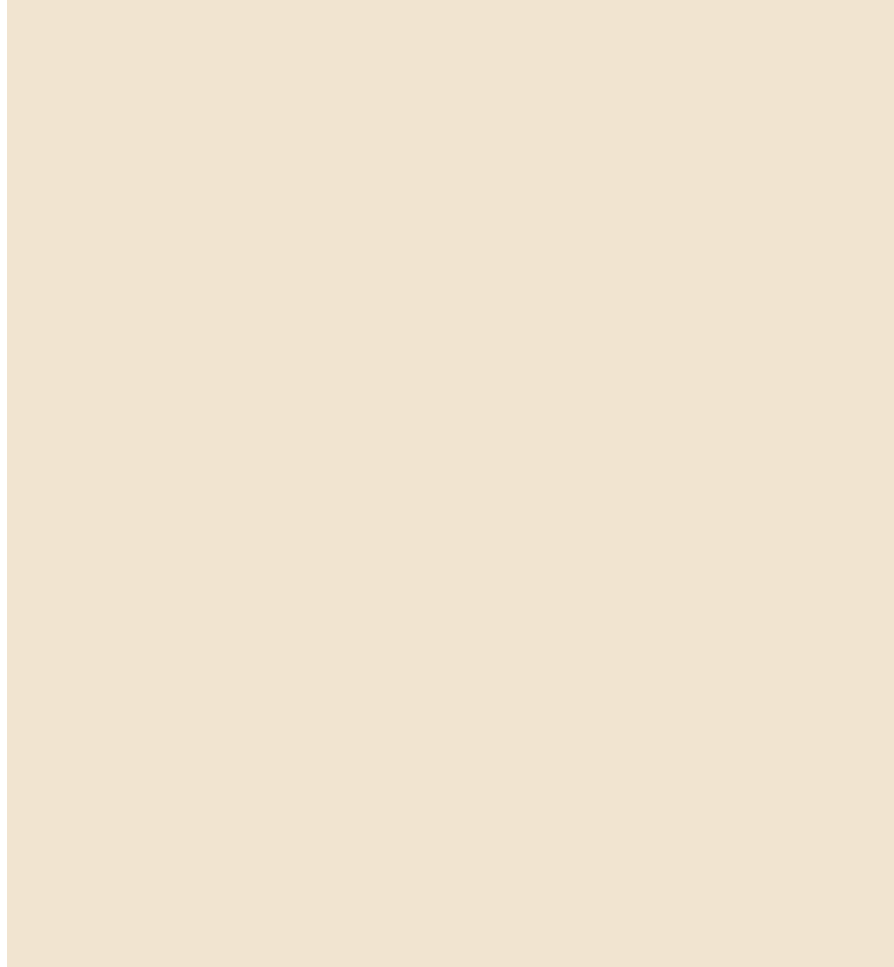








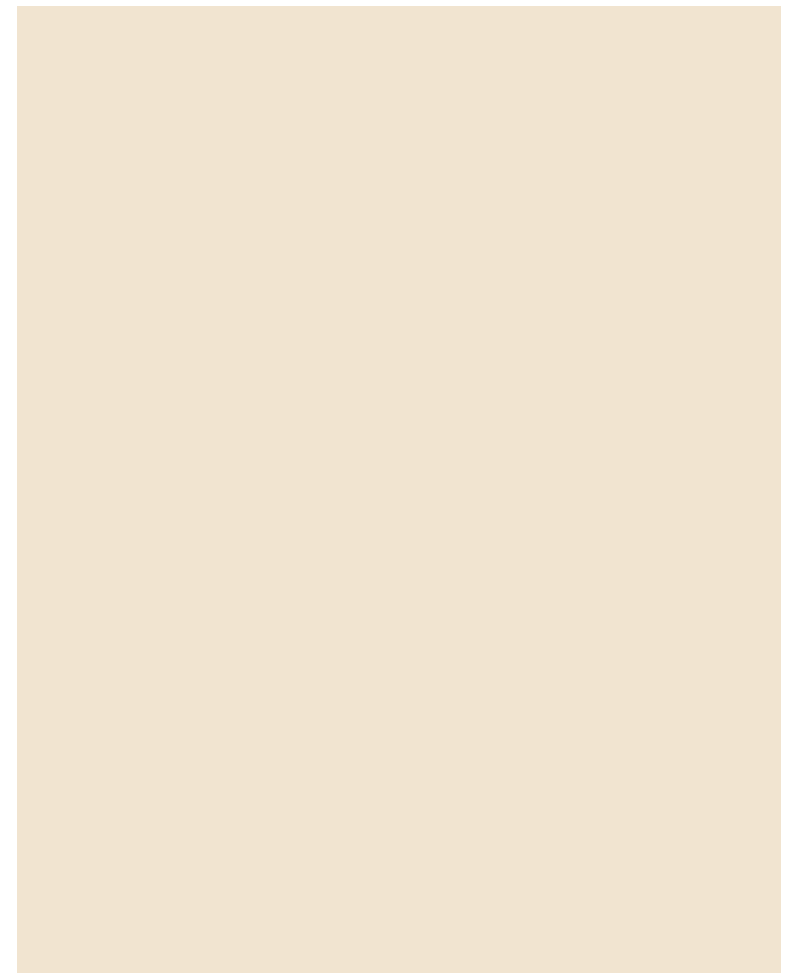




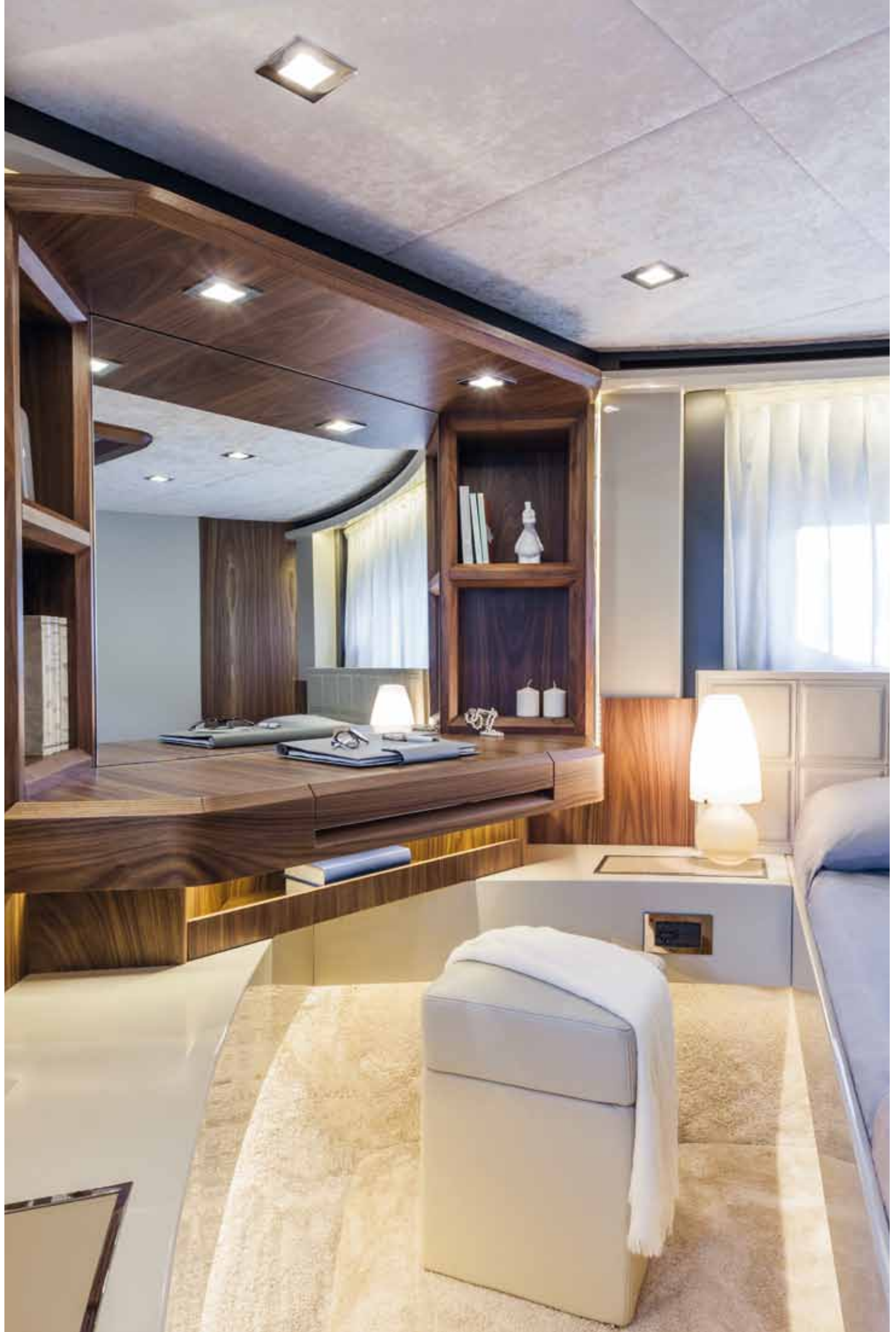
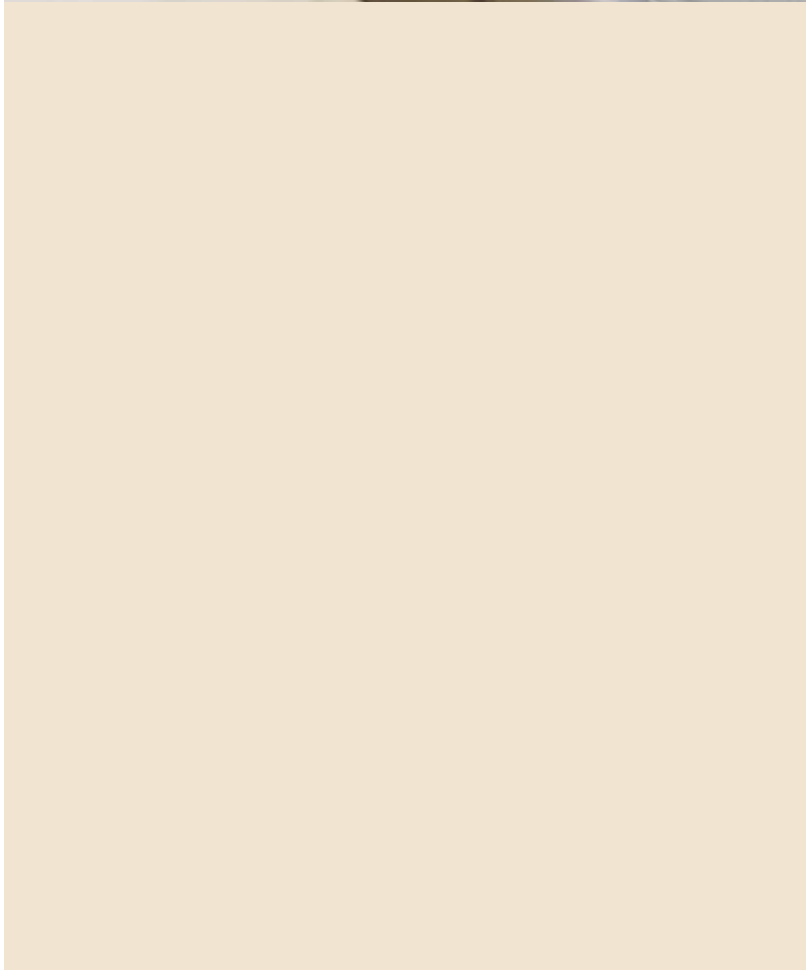


il vero stile
italiano













il vero stile
italiano





ABSOLUTE 64 FLY

Volvo Penta Engines - Motori:		2xD11-IPS950 (2x533 Kw-2x725 HP)	
		2xD13-IPS1200 (2x662 Kw-2x900 HP)	
Total length	Lunghezza FT	19,60 m	64 4"
Width	Larghezza	5,15 m	16 11"
Fresh water tank	Serbatoio acqua dolce	650 l	171,8 Us gal
Fuel tank capacity	Serbatoi carburante	3.000 l	792,5 Us gal
Number of beds	Posti letto	8 + 2	
Max. persons capacity	Portata max persone	No. 16	
Type-approval	Categoria	CE B	

Volvo Penta	2xD11-IPS950	2xD13-IPS1200
Cruising speed	25 Kn	26 Kn
Consumption lt/mile*	6,80	8,5
Consumption gal/mile*	1,80	2,23
Consumption Lt/h*	170	220
Consumption gal/h*	44,98	58,12
Maximum speed	30/31 kn	35 kn

* Total consumption for the 2 engines - Consumo totale per i 2 motori

All the specifications, sizes, weights and other data specified in the catalogues, brochures and advertising media are merely illustrative and information data, since they are average values for the standard product. The photos in the catalogue refer to a customized version of the present model: nothing of all this (specifications, sizes, data, photos, etc...) is considered as a contractual promise and in no case can be considered as evaluation elements for the conformity of the product, as per the terms of the CE 99/44 Directive.

In order to continuously improve its boat models, Absolute reserves the right to make the changes considered necessary for its own boats, also independent of the specifications contained in catalogues, price lists, technical sheets and any other publications, without any notice.

The standard and extra equipment, specified in the Absolute S.p.A. catalogues and price lists, is installed according to the related availability on the market.

Any printing mistake can not be the object of any claim.

The performance data are disclosed in good faith, they are only indicative and not binding because the various environmental factors can influence them, such as sea conditions and wind, as well as the condition of the ships themselves: such as cleaning the hull, the state of the propellers, the tuning of the engines, etc...

The official Dealers are not Absolute S.p.A. agents and they do not have any kind of authority to commit Absolute S.p.A. in any way towards third parties, without the written acceptance from Absolute S.p.A.

Le caratteristiche, le misure, i pesi ed i dati risultanti da cataloghi, depliant e pubblicità sono meramente illustrativi ed informativi, essendo valori medi per il prodotto standard; le fotografie del catalogo si riferiscono ad una versione personalizzata del presente modello: nulla di tutto ciò (caratteristiche, misure, dati, foto, ...) costituisce promessa contrattuale e in nessun caso possono essere considerate come elementi di valutazione della conformità del bene, secondo i termini della direttiva CE 99/44.

Absolute, al fine di migliorare costantemente i suoi modelli, si riserva il diritto di apportare alle proprie imbarcazioni tutte le varianti ritenute opportune, anche in deroga alle specificazioni contenute in cataloghi, listini, schede tecniche e in ogni altra pubblicazione senza alcun preavviso. L'equipaggiamento standard e optional, riportato sui cataloghi e listini Absolute S.p.A., è installato fatto salvo la sua reperibilità sul mercato. Eventuali errori di stampa non possono essere ritenuti oggetto di contestazione.

I dati relativi alle prestazioni sono divulgati in buona fede, si intendono puramente indicativi, e non sono vincolanti in quanto vari fattori ambientali possono influire su di esse, come: condizioni del mare e del vento, nonché le condizioni delle imbarcazioni stesse: quali la pulizia della carena, lo stato delle eliche, la messa a punto dei motori, ecc...

I concessionari ufficiali non sono agenti di Absolute S.p.A. e non hanno assolutamente nessuna autorità a impegnare Absolute S.p.A. in alcun modo nei confronti di terzi senza accettazione scritta da parte di Absolute S.p.A.



The Absolute Difference



Gobbi 520 salinig in the river in Piacenza - 1968

Experience

Celebrating over 40 years of boat building experience, the founders of Absolute are considered amongst Italy's pioneers of the modern powerboat manufacturing era. Initially producing boats under the Gobbi brand, privately held Absolute S.p.A. was formed in 2002 in collaboration and partnership with some of the brightest young minds in powerboat design and construction.

The benefit: A winning combination of experience and innovation at its best, which abundantly shows in every Absolute yacht.

Investment

Cementing its position and success in Europe and elsewhere, and demonstrating its commitment to the business, Absolute has invested in a state-of-the-art branch with competence and in nautical shipbuilding. A testament of the company's uncanny

efficiency and capability in product development, Absolute continues to invest in the design, development and tooling of at least two new models and two upgrades, year after year.

The benefit: Enjoying the confidence of owning a Yacht manufactured by a company with long-term commitment to the business, and the ability to execute with impressive consistency.

Construction

Boasting one of the most sophisticated construction processes in the industry, Absolute Yachts matches some unique structural features. The fibreglass hulls are reinforced with a multi-dimensional grid structure that occupies the entire length and breadth of the hull. A linear plan sculpted fibreglass that fits like a glove to the structural grid and is bound to the grid.

The benefit: Yachts of superior structural solidity and integrity leading to low interior noise levels, minimum vibrations, and sharp handling.

Worldwide Serviceability

Engineered for ease of service, systems and sub-systems found on Absolute Yachts are easily accessible for maintenance. To ensure that the equipment can be easily removed without resorting to invasive structural practices, all major or large components such as engines, transmissions, generators, refrigerators and other appliances, are installed when the boat's structure is already ended.

The benefit: Knowing that deep engineering thought and consideration was at play to ensure and enhance long-term serviceability.

Efficiency

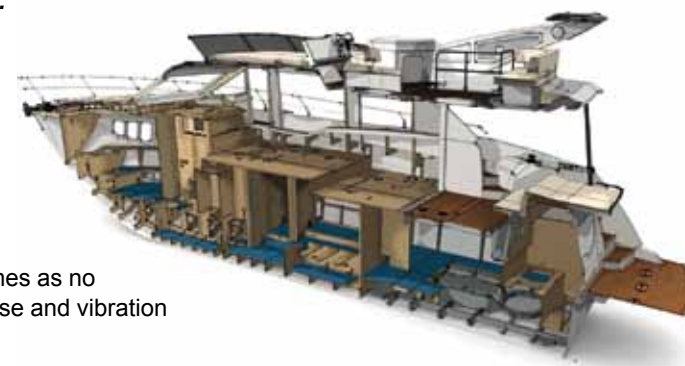
Absolute Yachts started a defining strategic partnership with Volvo Penta since the very inception of the IPS system. The result was the optimization of the system of design of the Absolute hulls, in order to obtain the maximum from Volvo IPS propulsion technology. This results in Yachts that are the most efficient ones in their size class. Absolute Yachts maintain the consumption per mile nearly identical from 22 to 32 knots.

The benefit: Class-leading fuel consumption, plus the unique benefit and ability to select cruising speed within the 22 to 30 knots without impacting on fuel economy.

Performance

Considering the optimized and efficient hulls, combined with the construction features found in each Absolute Yacht, superior performance comes as no surprise. On-the-water performance, defined in terms of raw acceleration, cruising and top speed, handling and seakeeping, as well as low noise and vibration levels, is class-leading and need to be experienced first hand.

The benefit: Astonishing comfort and superior vessel's comfort under every circumstance.



Italian Design

Penned by Absolute's talented Italian designers, Absolute Yachts are stylish, without compromising functionality. Well-finished interior, quality materials, leather and valuable surfaces. The stunning design elements are integrated with smart interior layouts and superb ergonomics. All-round visibility from well laid-out helms, wide and safe side-decks, abundant storage and spacious cabins and head/shower compartments are the result of Absolute's expertise.

The benefit: Experiencing the perfect marriage of Italian yacht design, functionality and safety.

Accolades

The past 10 years have been a most incredible journey for Absolute. Dedicated to designing, engineering and building yachts of distinction for boaters seeking something special. Absolute has been going from strength to strength. Just to mention a few recognitions, Absolute has been the recipient of awards for design, interior layout and innovation. Recently, it has been awarded for 70STY (2010), 53STY (2011), and the Absolute 72 Fly (2012).

The benefit: A range of world-class yachts, proudly built by a family-owned company, broadly endorsed and duly recognized by independent industry experts.





www.absoluteyachts.com   

marketing@absoluteyachts.com

via Petrarca, 4 - 29027 Podenzano (Italy)

+ 39 0523 354011

