



Introducing a new design standard
Meet the beautiful

SQUADRON 53



Every. Perfect. Detail.



No line or curve is left unconsidered

Let it be said with undeniable certainty that nothing was left to chance when it came to designing and building the Squadron 53.

Every precisely-placed curve, every elegant edge, every understated shade of colour has its place in the grand scheme of things. And simply because absolute attention to detail and a genuine appreciation of quality go hand-in-hand.

For us, painstakingly handcrafting an object of luxury such as the Squadron 53 is a matter of personal enjoyment and inner satisfaction...both ours and yours. In fact, you have just to run your hand over the perfectly matched grain of the 53's woodwork, or take in the graceful arch of its swept flybridge, or immerse yourself in a space so thoroughly considered to know it's all true.





Engineered to be greater than the sum of its parts

When we embarked on our new design vision for the Squadron 53, we made a conscious decision to be bold. We even dared to re-imagine the classic Fairline form in collaboration with one of Italy's most exciting yacht designers, Alberto Mancini. But we never did so at the expense of our uncompromising, engineering heritage.

Which means every feature on the Squadron 53 – whether you can immediately see it, or not – has been carefully thought about and assembled with the entire yacht in mind.

- **Exterior styling by Alberto Mancini**
 - **Foredeck seating**
 - **3-person cockpit sunpad**
 - **Skylight above lower helm**
 - **3 or 4 cabin layouts**
 - **Flat floor from the cockpit to lower helm**
 - **Full standing height in master cabin with a flat ceiling throughout**
- Optional equipment highlights:**
- Submersible bathing platform
 - Gyroscopic stabilisation
 - Single berth crew cabin
 - Harman Kardon audio upgrade
 - Marble upgrade throughout the interior
 - A choice of shaft driven engines:
 - Twin Volvo D11-675 with 1,350mhp and a 30 knot estimated maximum speed
 - Twin Volvo D11-725 with 1,450mhp and a 32 knot maximum speed




SQUADRON
53

INTRODUCTION

MAIN
FEATURES

EXTERIOR
DESIGN

INTERIOR
DESIGN

PRINCIPLE
DIMENSIONS

GENERAL
ARRANGEMENTS

CELEBRATING
50 YEARS

DEALERS


FAIRLINE
YACHTS




SQUADRON
53

INTRODUCTION

MAIN
FEATURES

EXTERIOR
DESIGN

INTERIOR
DESIGN

PRINCIPLE
DIMENSIONS

GENERAL
ARRANGEMENTS

CELEBRATING
50 YEARS

DEALERS


FAIRLINE
YACHTS

Designed to
take your breath away



SQUADRON
53

INTRODUCTION

MAIN
FEATURES

EXTERIOR
DESIGN

INTERIOR
DESIGN

PRINCIPLE
DIMENSIONS

GENERAL
ARRANGEMENTS

CELEBRATING
50 YEARS

DEALERS

FAIRLINE
YACHTS



INTRODUCTION

MAIN
FEATURES

EXTERIOR
DESIGN

INTERIOR
DESIGN

PRINCIPLE
DIMENSIONS

GENERAL
ARRANGEMENTS

CELEBRATING
50 YEARS

DEALERS



SQUADRON
53

INTRODUCTION

MAIN
FEATURES

EXTERIOR
DESIGN

INTERIOR
DESIGN

PRINCIPLE
DIMENSIONS

GENERAL
ARRANGEMENTS

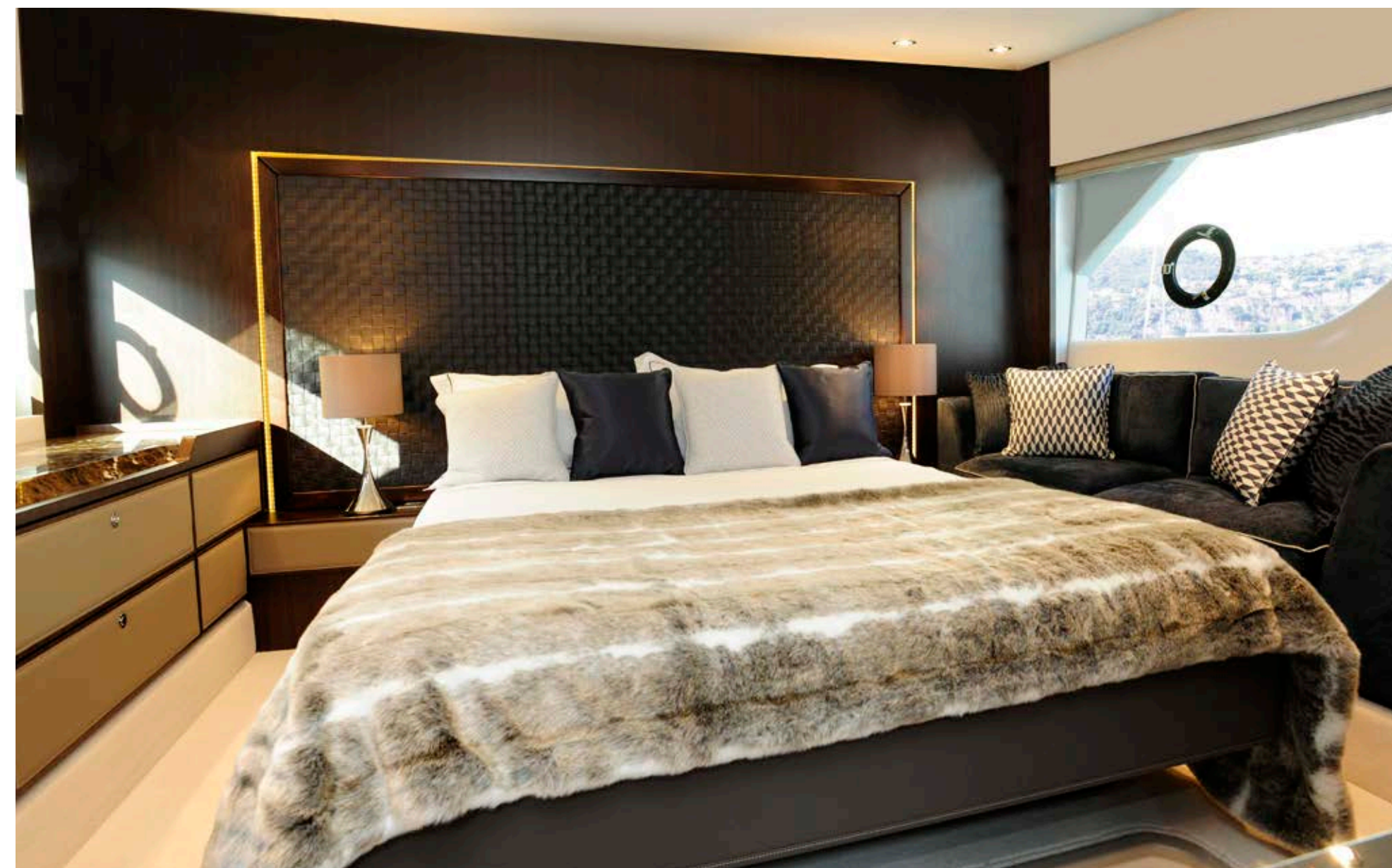
CELEBRATING
50 YEARS

DEALERS

FAIRLINE
YACHTS

True style is beyond skin-deep

In the spirit of building the perfect yacht at every possible level, we have also carefully created four different interior design schemes for you to choose from:



AMALFI

Inspired by Liguria's local architecture, this scheme exudes the sunny warmth synonymous with fragrant Italian lemon trees and the umbrella-lined shores of the Amalfi coast.



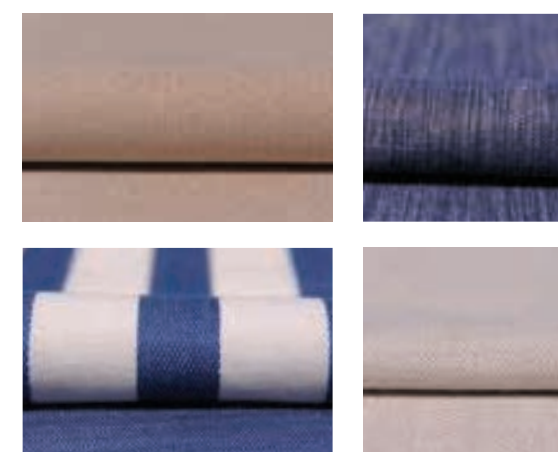
CAPRI

Understated, earthy colours, effortlessly combined with rich natural textures. All the hallmarks of an interior design collection that is as gentle as the Mediterranean breeze.



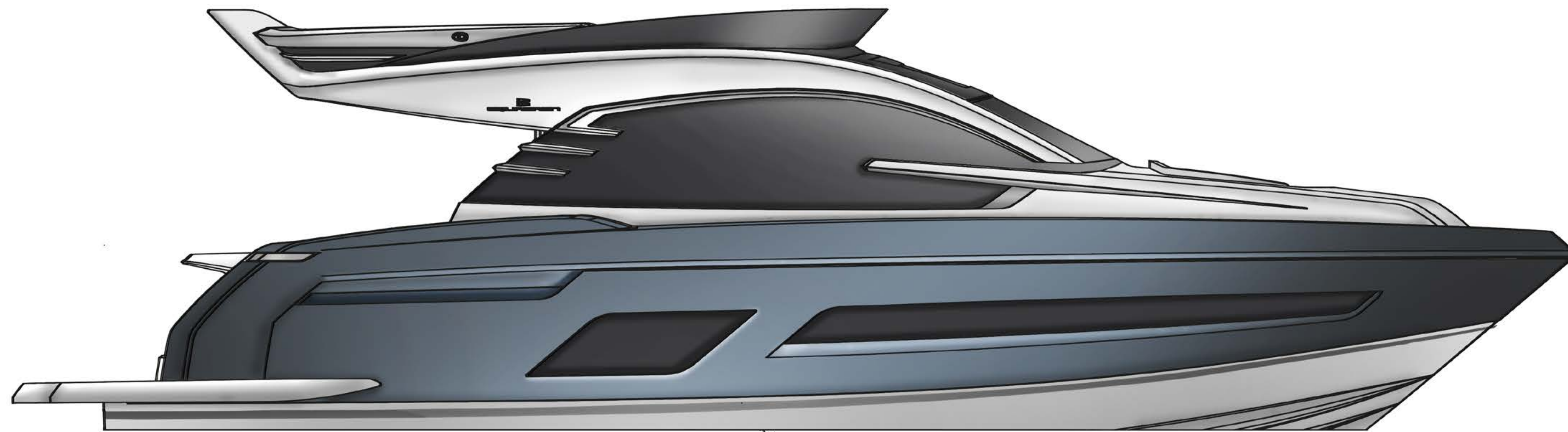
HAMPTONS

Evoking elegant vintage design cues, whilst offering a bold and contemporary interpretation of the luxury that was once the preserve of America's East Coast.



ST. TROPEZ

An ode to the sea where all manner of deep, oceanic blues tastefully swirl with muted greys, delicate creams and classic nautical motifs.



Beautifully balanced proportions

- Length overall (inc. pulpit): 55ft 6in (16.92m)
- Length overall (ex. pulpit): 53ft 6in (16.32m)
- Beam: 14ft 10in (4.52m)
- Number of berths: 6 – 9
- Draught: 3ft 11in (1.20m)
- Height above waterline (unloaded): 18ft 2in (5.56m)
- Transport height: 17ft 1in (5.15m)
- Dry weight (approx.): 21.16 imp. tons / 23.69 US tons (21,000kg)
- Fuel capacity: 530 gallons / 637 US gallons (2,412 litres)
- Water capacity: 120 gallons / 145 US gallons (550 litres)

[CLICK HERE FOR
FULL SPECIFICATIONS](#)



Twin helm



Triple helm

Flybridge

This has to be one of our favourite spaces on the Squadron 53, with its uninterrupted 360° views and tremendous entertainment potential.



Galley up, aft



Galley up, forward

Main Deck – Galley Up

We are also very happy to point out that the Squadron 53 is the first-ever Fairline yacht of its size to feature a cleverly designed seating area on the foredeck. As for inside, the galley can be located in one of two areas.

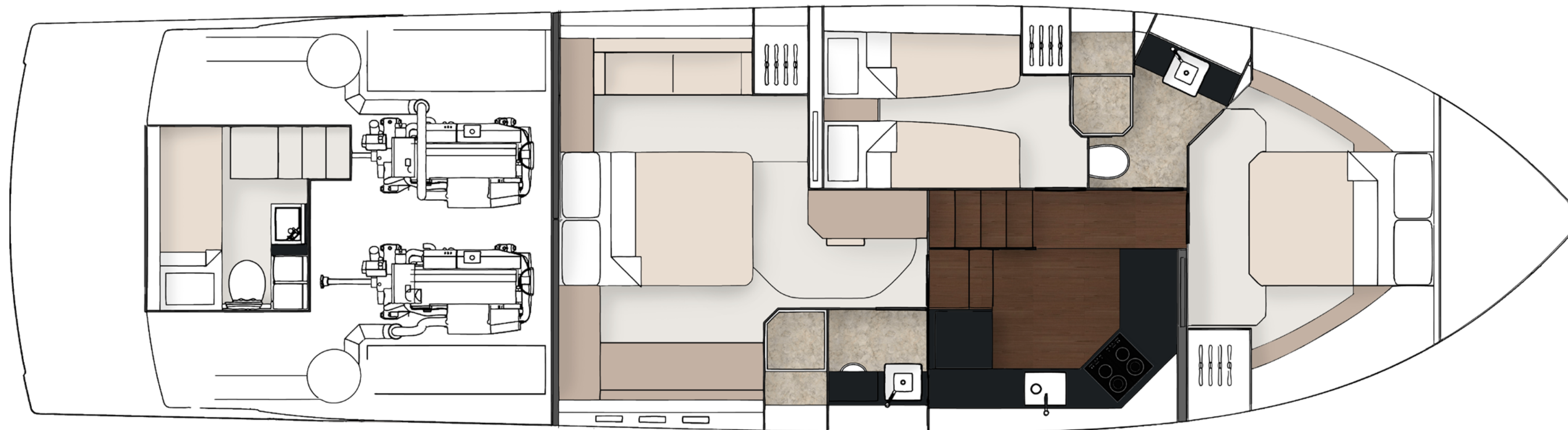


Main Deck with saloon sideboard



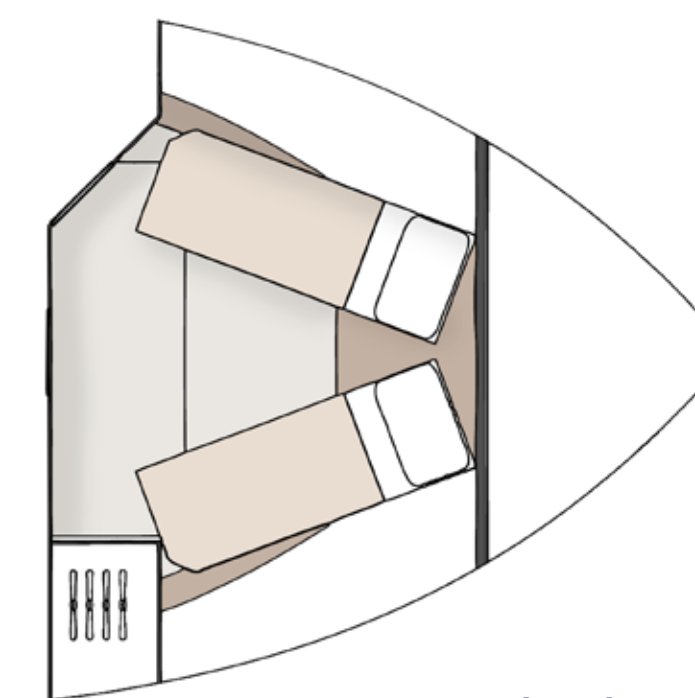
Main Deck with saloon couch

Main Deck – Galley Down

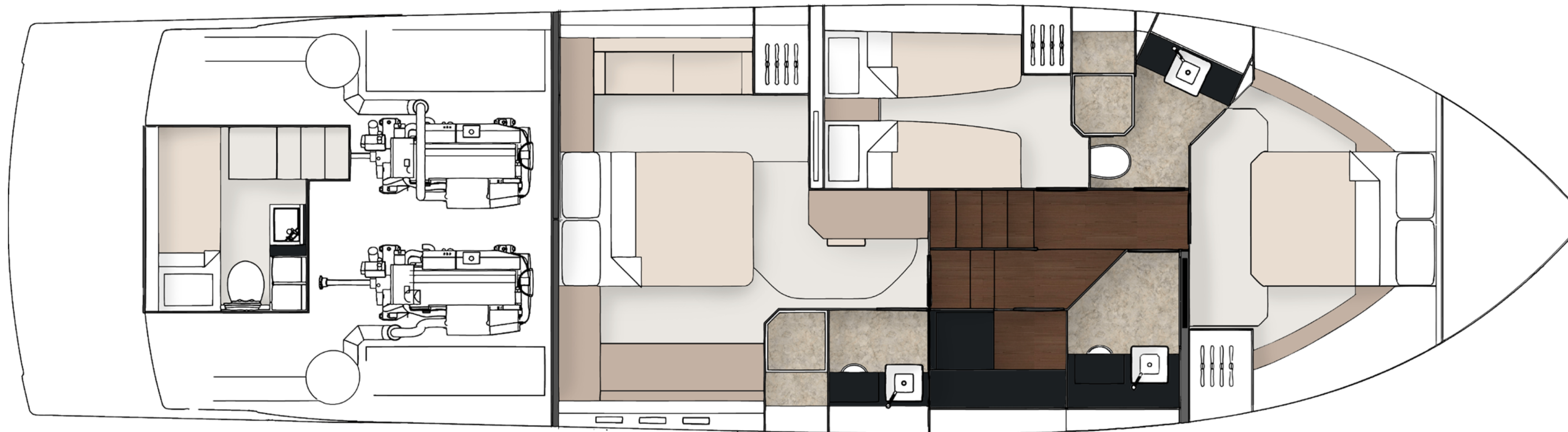


Lower Deck – 3 Cabin & Galley Down

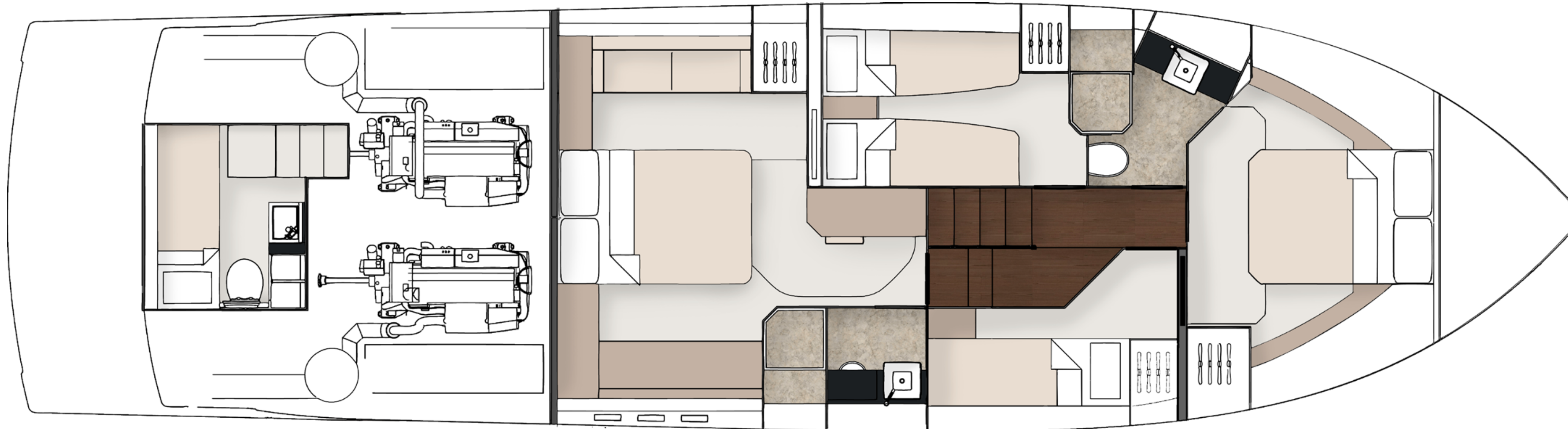
Spacious, airy and the epitome of on-board luxury, the lower deck is also fully customisable to suit your needs. You can choose between either a 3 or 4-cabin configuration.



Forward cabin
scissor berth option



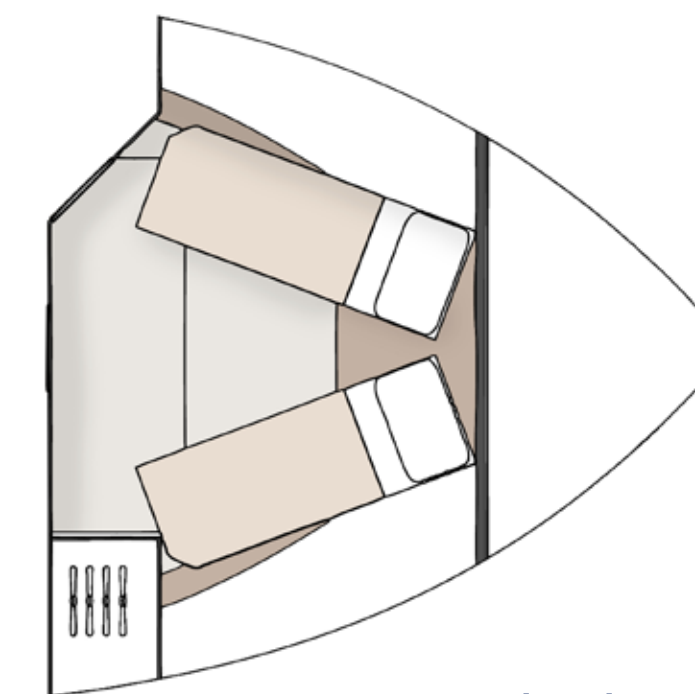
3 cabin with day head & utility area



4 cabin

Lower Deck

Enjoy extra space for your guests by specifying the optional fourth cabin which contains a pair of full length bunk beds.



Forward cabin
scissor berth option

Last year we celebrated our 50th anniversary

It was truly a Year Of Golden Moments

It's not enough to build a beautiful boat just for the sake of it. Building the kind of yachts which we are proud to put the Fairline name to, requires something more than just engineering genius or craftsmanship. It also requires the desire to create extraordinary moments for whoever owns it. Moments of joy, exhilaration, excitement...and even tranquility.

With 2017 being our 50th Anniversary, we took every possible opportunity to celebrate those incredible, golden moments since the brand's founder Jack Newington first launched the famous Fairline 19. This included moments like winning the World Yacht Trophy for 2017, becoming a finalist for the Motor Boat of the Year 2018 and being nominated for the European Powerboat of the Year 2018!



INTRODUCTION

MAIN
FEATURES

EXTERIOR
DESIGN

INTERIOR
DESIGN

PRINCIPLE
DIMENSIONS

GENERAL
ARRANGEMENTS

CELEBRATING
50 YEARS

DEALERS



An unrivalled dealership network

Just like the many parts that make up one of our extraordinary yachts, so too are international dealers handpicked and perfectly placed to cover anything and everything you could want from Fairline (you can visit fairline.com for details of your nearest dealer).

- | | | | | |
|-------------------------------|----------------------|--------------------------|-------------------------|----------------------------|
| Fairline Argentina | Fairline Cyprus | Fairline Italia | Fairline New York | Fairline South Mallorca |
| Fairline Benelux & W. Germany | Fairline Denmark | Fairline Japan | Fairline New Zealand | Fairline Southampton |
| Fairline Brazil | Fairline Eastbourne | Fairline Korea | Fairline North Mallorca | Fairline Sverige |
| Fairline Channel Islands | Fairline Florida | Fairline Lebanon | Fairline Poland | Fairline Switzerland |
| Fairline Chertsey | Fairline Great Lakes | Fairline Malta | Fairline Portugal | Fairline Thailand |
| Fairline Chesapeake | Fairline Greece | Fairline Menorca | Fairline Queensland | Fairline Torbay |
| Fairline Colombia | Fairline Hong Kong | Fairline Mexico | Fairline Russia | Fairline Turkey |
| Fairline Costa Blanca | Fairline Ibiza | Fairline Middle East | Fairline Singapore | Fairline Ukraine |
| Fairline Côte d'Azur | Fairline India | Fairline Monaco | Fairline South Africa | Fairline Victoria |
| Fairline Croatia | Fairline Israel | Fairline New South Wales | Fairline South China | Fairline Western Australia |



SQUADRON 53