

WORLD LAUNCH
CANNES YACHTING FESTIVAL
8TH SEPTEMBER 2020



TARGA 58 GTB





EXPAND YOUR HORIZONS.

An exciting, brand new motor yacht is, of course, something worth sharing with the world. Especially when it is the Targa 58 GTB. With its stunning, extended 'Beach club' platform – the first British-born sub-80ft model to feature one – you can relax and enjoy a closer connection to the water, wherever you go.



IT'S ALL IN THE DETAIL.

Meticulously crafted, the interior is a truly stunning place to be. Contemporary herringbone flooring adds a subtle yet elegant touch, while large expanses of glass provide plenty of natural light to enhance the interior ambience. Whether you are enjoying the comfort of the saloon or the luxury of the master cabin, you will always find yourself surrounded by sheer, unflinching beauty.







LIFE'S A BEACH.

But it's not just what's on the inside that counts; the outside of the Targa 58 GTB is where you can really live life to the full. Here, you can experience real wow factor. The bathing platform extends, and the folding wings lower on either side to create a spacious, teak covered floating deck. Many an hour can now be spent relaxing in the secluded bay you have discovered, or showing off your culinary skills on the pull-out BBQ. You could say, it's the perfect platform for an extended stay.

CAREFULLY CONSIDERED PROPORTIONS

PRINCIPAL DIMENSIONS

Length overall (inc. pulpit)	60'0" (18.28m)
Beam (inc. gunwale)	16'3" (4.97m)
Draught	2'6" (0.78m)
Height above waterline	13'8" (4.21m)
Transport height	16'4" (5.0m)
Dry weight (approx.)	26.62 tons/29.82 US tons (27,051kg)
Fuel capacity	484 gallons/581 US gallons (2,200 litres)
Water capacity (inc calorifier)	132 gallons/158 US gallons (600 litres)
Berths	6 – 7
Classification	CE Category B
Capacity	16 persons

Engines and Performance

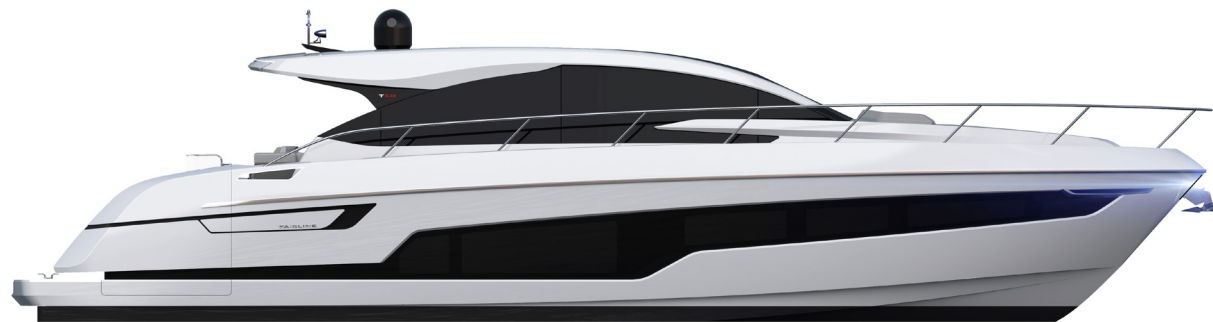
2 x Volvo Penta D13-900 shaft drive, diesel (1800hp): 29 knots (est. max.)

2 x Volvo Penta D13-1000 shaft drive, diesel (2000hp): 31 knots (est. max.)

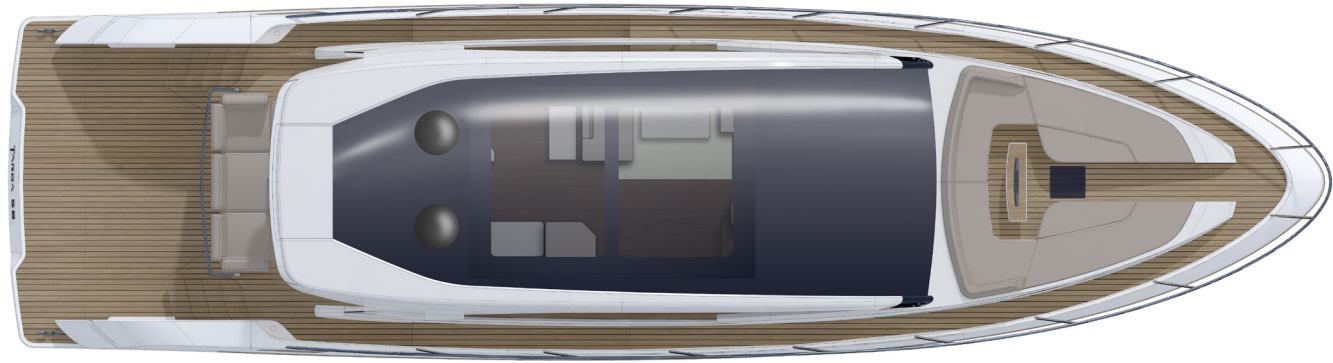
2 x Caterpillar C12.9 shaft drive, diesel (2000hp): 31 knots (est. max.)

2 x MAN V8 1200 shaft drive, diesel (2400hp): 33 knots (est. max.)

2 x MAN V8 1300 shaft drive, diesel (2600hp): 36 knots (est. max.)



TARGA 58 GTB MAIN DECK

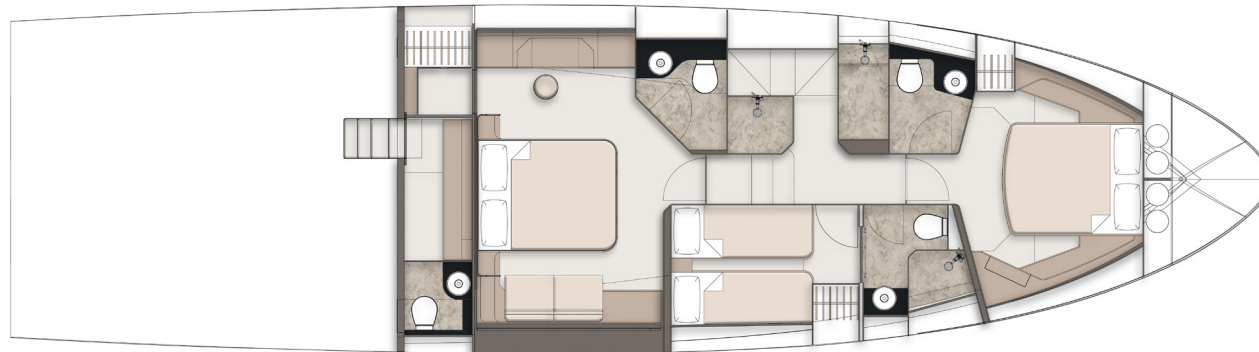


TARGA 58 GTB MAIN DECK BEACH CLUB



TARGA 58 GTB

3 CABIN





JOIN THE FAIRLINE FAMILY.

Visit fairline.com and start to see a world of possibilities.

Come to us for adventure. Come to us for design and heritage. And come to us for forward thinking. But most of all, come and experience our acclaimed Dealership network.

Each Appointed Fairline Dealer is a professional, thriving business, working with your best interests at heart and using their intimate local knowledge to your advantage. Yes, they will provide you with a trusted service, but also friendship and care beyond the call of duty.



Fairline Argentina
Fairline Australia
Fairline Baltic
Fairline Benelux & West Germany
Fairline Beirut
Fairline Brazil
Fairline Channel Islands
Fairline Chesapeake
Fairline Colombia
Fairline Côte d'Azur
Fairline Croatia

Fairline Cyprus
Fairline Denia
Fairline Eastbourne
Fairline Eastern Canada
Fairline Egypt
Fairline Empuriabrava
Fairline Finland
Fairline Florida
Fairline Great Lakes
Fairline Greece
Fairline Hong Kong

Fairline Ibiza
Fairline India
Fairline Israel
Fairline Italy
Fairline Korea
Fairline London
Fairline Maldives
Fairline Mallorca
Fairline Malta
Fairline Menorca
Fairline Mexico

Fairline Middle East
Fairline Monaco
Fairline New York
Fairline New Zealand
Fairline Northwest
Fairline Norway
Fairline Philippines
Fairline Poland
Fairline Poole
Fairline Portugal
Fairline Russia

Fairline Singapore
Fairline South China
Fairline South Germany & Austria
Fairline Southampton
Fairline Southern Spain
Fairline Sweden
Fairline Switzerland
Fairline Turkey
Fairline Ukraine

© FAIRLINE YACHTS LTD 2020. ALL RIGHTS RESERVED. FAIRLINE AND TARGA ARE REGISTERED TRADEMARKS OF FAIRLINE YACHTS LTD. TOGETHER WITH ALL TEXT AND IMAGES CONTAINED IN THIS PUBLISHED MATERIAL, THEY ARE PROTECTED BY COPYRIGHT AND MAY NOT BE PRODUCED IN ANY FORM WITHOUT THE EXPRESS WRITTEN PERMISSION OF THE COPYRIGHT OWNERS. Published by Fairline Yachts Ltd, Oundle, PE8 4HN, England. Fairline Yachts constantly seek ways of improving specifications, design and production. Therefore, alterations take place on a continuous basis. Whilst every effort is made to produce up-to-date literature, the descriptions, specifications, illustrations and photographs in this brochure should not be regarded as a definitive guide to current specifications, nor does it constitute an offer for the sale of any particular boat. Performance estimates are given in good faith, but are in no way guaranteed for any particular boat. Dirt on the bottom of the boat, damage to propellers, engine tuning, external water and air temperatures and the weight of crew, fuel and water carried can all adversely affect performance. For these and other reasons we can give no performance guarantees.