

**SEA  
XPLORER**

DISCOVER  
YOUR WORLD  
BEYOND LIMITS

**DAMEN**

Koningsweg 2  
4381 NA Vlissingen  
The Netherlands

T +31 118-485 002  
E info@seaxplorer.nl

| www.seaxplorer.nl

**DAMEN**

DISCOVER  
YOUR WORLD  
**BEYOND LIMITS**



**SEA**XPLORER



# INDEX

## LUXURY EXPEDITION YACHTING

Finally, a true explorer ..... page 06

## JOURNEYS OF A LIFETIME

Unspoiled destinations ..... page 12

## DESTINATIONS

The wildest places on Earth ..... page 26

## BEYOND THE TRADITIONAL YACHT

Purpose-built ..... page 40

## THE RANGE

SeaXplorer 65 ..... page 79

SeaXplorer 90 ..... page 80

SeaXplorer 100 ..... page 81

## GENERAL ARRANGEMENT

SeaXplorer 65 ..... page 82

SeaXplorer 90 ..... page 88

## DAMEN

The DAMEN family heritage ..... page 98

The DAMEN Global Quality Standard ..... page 100

# FINALLY, A TRUE EXPLORER

Set out on the journey of a lifetime to places others can't reach – exclusive adventures to share with friends and family in total comfort, style and safety.

*“This is what we have been waiting for - a purpose-built, go-anywhere, globally capable luxury Expedition yacht.”*

*Rob McCallum, Founding Partner, EYOS Expeditions*

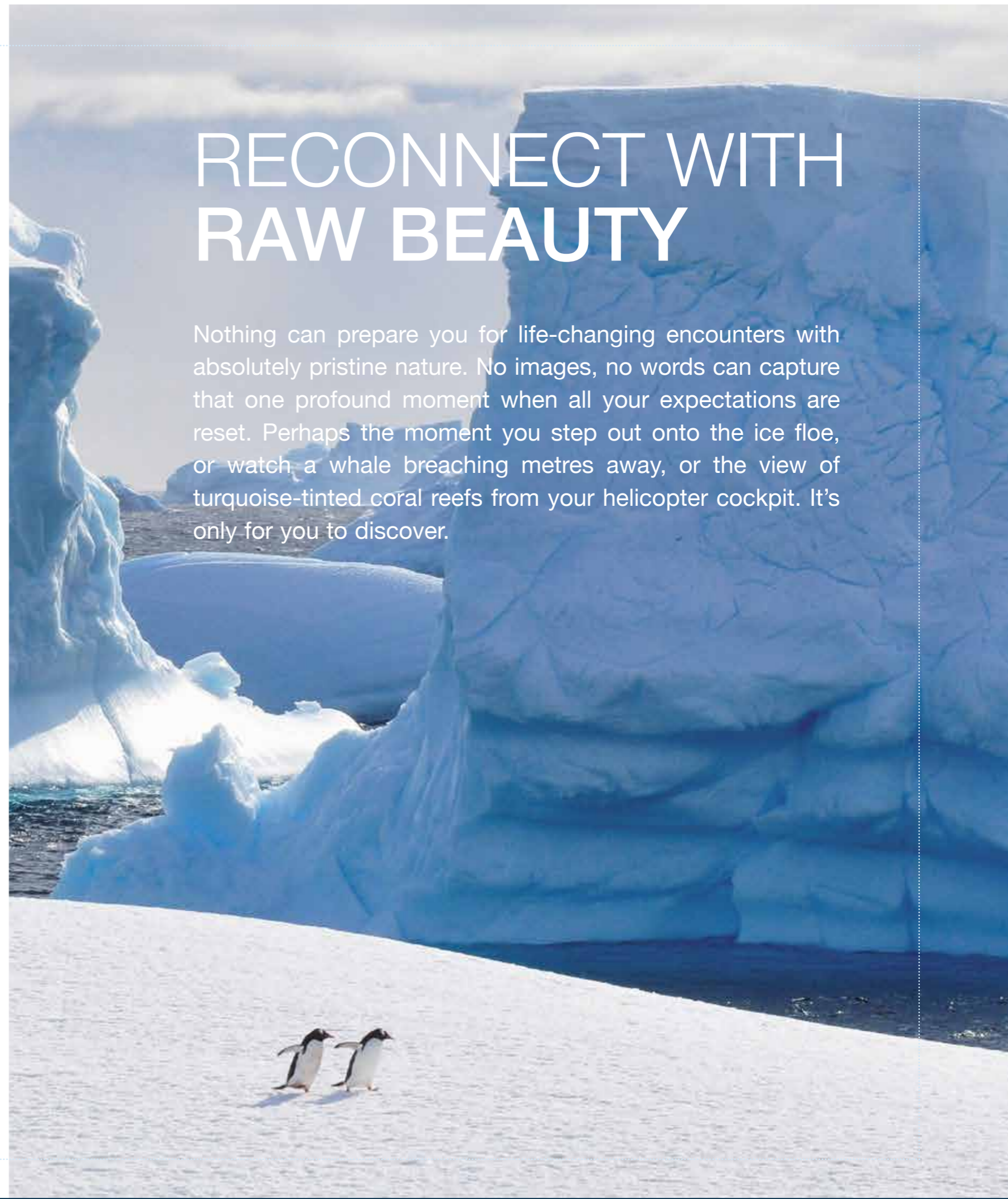


SeaXplorer 90



# RECONNECT WITH RAW BEAUTY

Nothing can prepare you for life-changing encounters with absolutely pristine nature. No images, no words can capture that one profound moment when all your expectations are reset. Perhaps the moment you step out onto the ice floe, or watch a whale breaching metres away, or the view of turquoise-tinted coral reefs from your helicopter cockpit. It's only for you to discover.



*"She stayed there for hours on her own, wanting for nothing, as one by one the penguins waddled over, so genuinely wild that her presence among them provoked nothing but their curiosity."*

*Tim Soper, Founding Partner, EYOS Expeditions*



# EXCLUSIVITY AWAITS

It's out there. Well beyond conventional jet-setting society and far removed from the busy board rooms of bustling capital cities, there are places in the world completely isolated from prying lenses and idle chatter. Isn't that true exclusivity? You can get there. And on your terms.



SeaXplorer 90



*Come face to face with the highest form of majesty.*

# UNSPOILED DESTINATIONS

*“Complete autonomy means enjoying the absolute highest level of luxury for more than a month, even in the most remote places on Earth.”*

*Rob Luijendijk, Managing Director, AMELS*

SeaXplorer 90



Your vision of an ocean paradise really exists. It's time to find our planet's true unspoiled islands, coves and dive spots – places that you don't have to share with the crowds. Venture well beyond the usual yachting circuit, to incredible destinations that others can't reach, while enjoying the highest level of comfort, style and independence. This is the ultimate luxury experience.





SeaXplorer 65

# THE EXPERIENCES THAT SHAPE A LEGACY

Expedition yachting together with your family – you're not only creating extraordinary moments that your children will remember for a lifetime, but these precious experiences also form the bonds that connect generations. Away from distractions, focused on the passage forward and the core challenges of accomplishment, this is where the next generation of leaders and strong characters emerge.





### ADVENTURES WITHOUT LIMITS

- Snorkeling and scuba diving
- High-tech deepwater submersibles
- Helicopter excursions
- Mountain biking and heli-skiing
- Camping on the ice
- Kayaking, sailing, fast tenders and waverunners
- Sport fishing
- Jet-boating up wild rivers
- Floatplane safaris

# MAKE DISCOVERIES

You've got the most thrilling high-tech gear and the spirit of adventure... now let's go!



# “REACHING THE WILDEST PLACES ON THE PLANET”

Interview Rob McCallum, Founding Partner, EYOS Expeditions



## About EYOS Expeditions

*After decades designing once-in-a-lifetime experiences to our planet's most remarkable places, the experts at EYOS Expeditions know better than anyone how to organise bespoke superyacht expeditions in complete luxury and safety. Working with Captains, they build bespoke itineraries, acquire permits, arrange aviation services and gather a world-class expedition team.*



Organising exclusive private expeditions to destinations like Greenland, Antarctica and Papua New Guinea is a growing niche in high-end luxury travel. Seattle-based New Zealander Rob McCallum is right at the forefront as one of the founders of EYOS Expeditions, whose clients want to go far beyond the conventional yachting experience.

## When do Owners need a specialist expedition guide?

“Our clients want to reach the wildest places on the planet. They bring their own ideas for these adventures and they want to live extremely well while they’re having them. But they understand that there’s no yachting infrastructure in those remote destinations. Actually, most of the time there’s no infrastructure of any kind. Some of these waters are poorly charted, and you face the inherent challenges and risks from icebergs, fast-changing weather and seas, unpredictable wildlife, you name it. Our clients come to us because we get them and their family and friends there and back in total comfort, luxury and safety.”

## Are your expeditions only for Explorer yachts? Or traditional superyachts as well?

“We make a bespoke plan for each client’s expedition and we’ve normally had to reduce the plan to match the capabilities of the yacht. The traditional ‘white’ yachts can only go so far, and to be honest, even most of the vessels calling themselves Explorer yachts are operating outside their design specifications. Often you see they have an ‘Explorer’ look, and maybe transatlantic range, but none of the actual capability you need.

So for true luxury expeditions, we’ve often had to compromise with converted commercial vessels. These ships are actually very capable in certain conditions, but they were never built for the types of destinations our clients seek.”

## So what makes a yacht truly suited to luxury expeditions?

“Capability. And even more capability. I’ll give you three examples. The hull and propulsion installation should be built according to the Polar Class regulation with the capability to break through the ice. I don’t mean just the light ice reinforcement (Ice Class 1C) that you see on some yachts – that’s not nearly enough. Another example is extra storage – gear, fuel, provisionings, staff and guides. You’re taking it all with you for weeks at sea without a port call. And one more example, a heavy duty hull that’s designed for optimum seakeeping and comfort. Even with just those three demands, you’ve already run out of capable yachts. And the thing is, we still have at least another hundred features on our wish list! That’s why we are so excited about the SeaXplorer. At last, here is a vessel that we can safely operate at the very ends of the Earth.”

# MARE INCOGNITUM

Hic sunt dracones (here be dragons)

Covering more than two-thirds of the planet's surface, our oceans are vast. Much of the seabed remains unexplored, and whole coastlines are poorly charted, sometimes relying on measurements taken centuries ago. In these remote corners of Earth, you can still find mysteries yet unsolved and forgotten treasures of the deep.



*Spend a romantic tropical night on Sun Deck, listening to the waves softly breaking over the reef. Or under the Arctic's midnight sun, celebrate the day's discoveries with a warm dip in the Jacuzzi.*

# IN THE FOOTSTEPS OF GIANTS

Sir Ernest Shackleton, Captain Robert Falcon Scott, Sir James Clark Ross, Roald Amundsen, Captain James Cook. The real legacy of these men is not just in the place names they inspired, or stone huts they left behind, or the records they broke. The real legacy is in their leadership, management, planning and preparation, decision-making under extreme circumstances and most of all, determination not to accept that it couldn't be done. Retrace their footsteps in landscapes little changed for centuries, but with the technology of today's new era of exploration.

#### Circumnavigator

Russian Faddey Faddeyevich Bellingsgauzen circumnavigated the globe. In 1820 he became the first explorer to see land in Antarctica.

#### Reaching the North Pole

Americans Robert Edwin Peary and Matthew Henson were the co-discoverers of the North Pole in 1909.

#### Crossing the Indian Ocean

Arguably the world's first great maritime explorer, China's Zheng He commanded expeditionary voyages to Southeast Asia, South Asia, the Middle East, and East Africa from 1405 to 1433.

#### Prince of Travellers

In the 12th Century, Ibn Battuta visited most of the known Islamic world as well as many non-Muslim lands, and is generally considered one of the greatest travellers of all time.



*This headstone in Grytviken, South Georgia, marks the final resting place of one of the Heroic Age of Antarctic exploration's greatest adventurers.*



Ernest Shackleton

Robert Falcon Scott

James Clark Ross

Roald Amundsen

James Cook

*What would yesterday's explorers have given for the SeaXplorer's high-tech gear and icebreaking steel hull?*

# THE GREATEST ESCAPE

Interview Tim Soper, Founding Partner, EYOS Expeditions



“An expedition is the ultimate escape from the pressures of daily life. But surrounded by vast expanses of ice or moored near remote volcanic islands, it can feel like entering a fantastic and unfamiliar new world. Our clients trust us to guide them into these extremes of our planet and that often creates special and unusual relationships.

“As expedition guides in these potentially dangerous environments, we share moving experiences in raw nature while being responsible for the safety of their friends and family. When the ice is cracking or you’re drifting in freezing currents or landing a zodiac through Pacific surf, that’s when our experience and capability is vital. In other words, we provide a luxury experience when our clients want it, but we take charge when we need to.

“I think the Owner’s relationship with the SeaXplorer will be similar. Parts of the yacht are in fact a very serious ship, dedicated to getting you there and back safely. At the same time, the SeaXplorer is a luxurious oasis in the wilderness. It’s not all luxury, but you wouldn’t want to come here with a 100% luxury yacht. It’s comfort when you want it, capability when you need it.”



# THE WILDEST PLACES ON EARTH

## Beyond the superyacht circuit

The Mediterranean and the Caribbean Seas and all their islands are undoubtedly beautiful, but altogether they amount to only 6% of all the world's coastlines and only 1.5% of the ocean's total surface area. Yet 90% of luxury superyachts never venture any farther. If you're willing to go off the beaten track, Earth is still a big place.



# ANTARCTICA, ROSS SEA, SOUTH GEORGIA

This is the benchmark, the most challenging cruising ground for any yacht. But if you can get here, if you can undertake this journey, the rewards are completely indescribable. The seventh continent, Antarctica, is something you simply have to see in your lifetime.

## Go there with the SeaXplorer

- Keep going, where most vessels have to stop and turn back.
- Voyage as far south as a vessel can possibly go.
- Ram into the pack ice and walk right out onto the frozen sea.
- Deploy tenders within minutes so you don't miss a chance encounter with a Humpback whale.
- Take a stimulating trek among the penguins, followed by the warm comfort of a Turkish steam shower and drinks in the sky lounge.
- Visit the historic huts left behind by Shackleton and Scott



## HIGHLIGHTS

- Penguins
- Humpback whales, orcas, elephant seals
- Spectacular ice formations
- First light at Gold Harbour
- Historical trekking in the spirit of Sir Ernest Shackleton

# DO THINGS THAT OTHERS CAN'T



### Ancient ice

Chunks of thousand year old freshwater glacial ice eventually break off into the sea. Remarkably crystal clear, this ancient ice is a perfect accompaniment to your favourite drink.



SeaXplorer 65



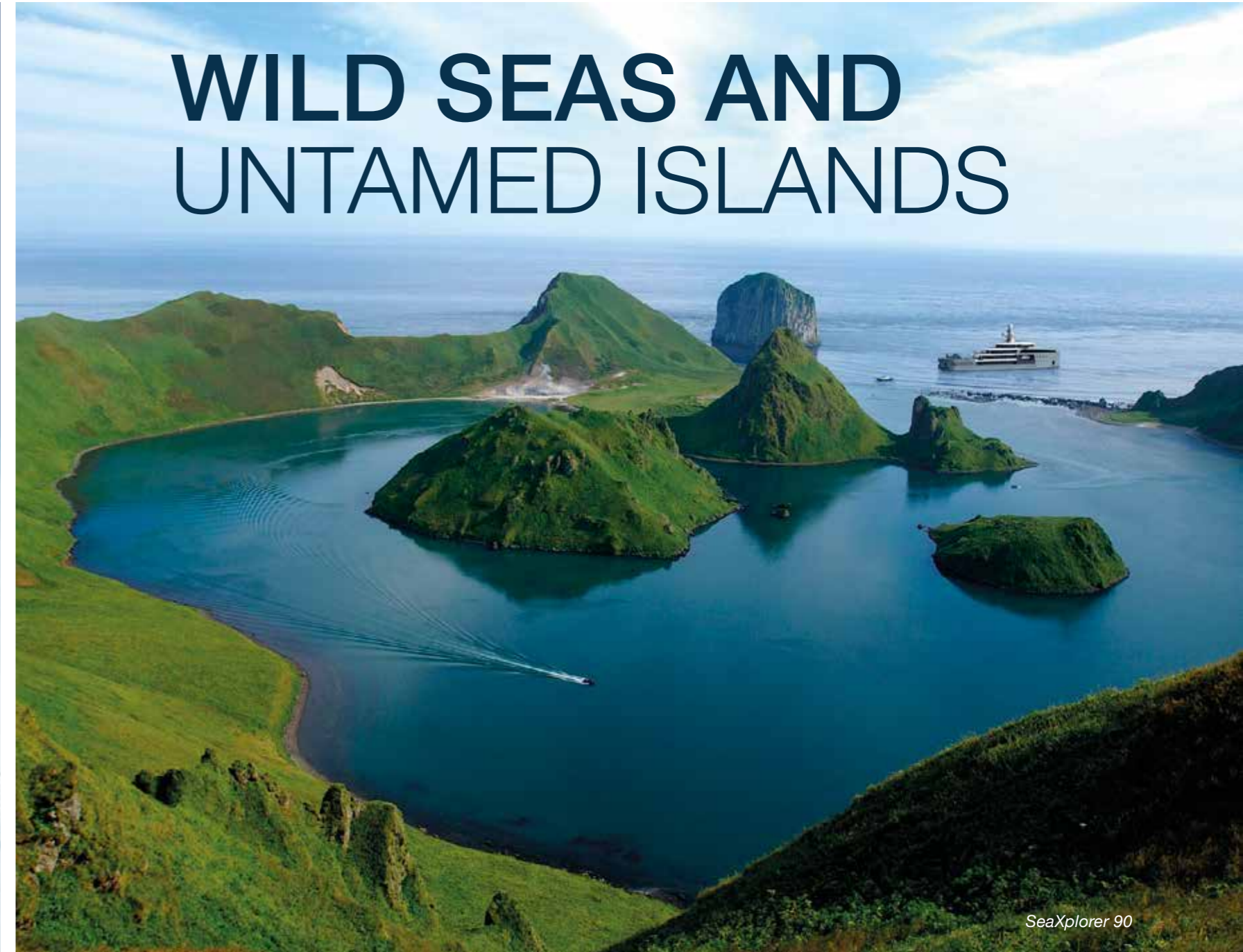


## BERING SEA, RUSSIAN FAR EAST

The seas at the top of the Pacific Ring of Fire host one of the world's most biodiverse and productive ecosystems. These deep waters – shaped by currents, sea ice and rapidly shifting weather – are surrounded by dramatic, rugged landscapes.

### Go there with the SeaXplorer

- Sit back and enjoy the panoramic splendor from the observation lounge and outdoor bow point observation deck.
- Stay comfortable in any weather thanks to the yacht's proven seakeeping SEA AXE platform, plus active stabilisation system.
- Safe disembarking with less waiting with professional launch and recovery systems.
- Fully certified helideck and enclosed hangar make remote helicopter operations possible.



SeaXplorer 90



### HIGHLIGHTS

- Orca, sea lions, walrus
- Sport fishing for salmon and big 100 kg halibut
- Heli-skiing in the Chugach Mountains
- Brown bears, tufted puffins, teeming bird life
- Dramatic volcanic landscapes of Kamchatka



# PURE BY NATURE



SeaXplorer 90

## HIGHLIGHTS

- Polar bears
- Icebreaking
- Polar kayaking
- Inuit culture
- Arctic narwhal, beluga whales, walrus, muskox
- Ice swimming in below freezing waters followed by onboard sauna or Jacuzzi

### Beware of the Growlers

No, we don't mean roaming polar bears, a 'growler' is a potentially dangerous chunk of sea ice floating just below the surface. We've strongly reinforced the SeaXplorer's entire hull up to Polar Class 6 standards so it can even break through ice about a metre thick. Also, detect and avoid unnecessary risks with the SeaXplorer's forward-looking echosounders as well as ice radar. Mind you, it's worth keeping a lookout for the furry white 'growlers', too.



## NORTHWEST & NORTHEAST PASSAGE, ARCTIC SVALBARD, GREENLAND

A true navigator deep into the Arctic Circle requires real capability for sailing into icy waters and actually breaking through ice, not just a reinforced hull. Go farther, for longer, with power, safety and endurance.

### Go there with the SeaXplorer

- The only purpose-built yacht capable of visiting the ice at its most dramatic, outside the short summer season.
- No limits with 40 days of full luxury service with no port calls. Remain on station in remote areas for several weeks at a time.
- Join the Captain on the wide, open bridge, the expedition's primary control centre.
- Accommodation for Ice Pilots
- The crow's nest more than 20 metres above the water is a luxurious nook with panoramic views.
- Safely hold station next to glaciers using Dynamic Positioning, with no need for risky anchoring in icy waters.



# GO WHERE LEGENDS ARE MADE

## HIGHLIGHTS

- Dances, art and customs developed over 30,000 years
- The 'land divers' of Vanuatu
- Spectacular active volcanoes
- Pristine reefs and awesome diving in the 'Coral Triangle'
- Meeting friendly Chiefs and shy clans not used to seeing outsiders
- Step back into the Stone Age

## PAPUA NEW GUINEA SOLOMON ISLANDS VANUATU

Leave the world you know – and the world that knows you – behind. Interact with people who possess little knowledge of the outside world, but will welcome you to theirs. This is true exploration – crossing both culture and time in a single moment.

### Go there with the SeaXplorer

- With few roads, use the large (12-metre) powerful tenders to navigate up river.
- Take your helicopter into the vast and mysterious Highlands.
- Take your guides/interpreters with you to transcend cultural boundaries and step back through the millennia into the Stone Age.



# MICRONESIA, SOUTHEAST ASIA

Dive Earth's greatest concentration of ocean biomass with beautiful waters, stunning reefs and atolls. By heading off the beaten track to places without established anchorages or lagoon access, you may well discover the next top dive spots before anyone else.

### Go there with the SeaXplorer

- The perfect platform for scuba, with dedicated Dive Support tenders with sonar equipment.
- ROV and submersible operations anywhere you choose. Launching is fast and functional.
- Fully equipped dive centre, Divemaster workshop, wetsuit drying room and recompression chamber.

### HIGHLIGHTS

- Ultimate diving experiences
- Submersibles reveal living fossils of the deep
- Snorkeling coral reefs, atolls and dramatic rock formations
- Sunken shipwrecks
- Swimming with dolphins

# UNDERSEA PARADISE



SeaXplorer 65

HIGHLIGHTS

- Warm welcome from friendly locals
- Unspoiled beaches and the clearest blue waters
- Wellness, relaxation
- Gourmet dining
- Hibiscus, Tahitian gardenia, rare orchids



EXPERIENCE  
PURE SERENITY

SeaXplorer 65

POLYNESIA

Find your own private escape among more than a thousand islands in the vast Pacific Ocean, such as the romantic Îles Marquises, the floral paradise of Paul Gauguin. More than 800 nautical miles northeast of Tahiti, it's one of the most remote island groups in the world.

Go there with the SeaXplorer

- Enjoy exclusive spaces on board for sun, shade and seabreezes.
- Main Deck aft swimming pool and Sun Deck Jacuzzi.
- Finest dining experiences with top service, thanks to professional galley facilities and extensive provisioning.
- Full-beam Wellness Centre with hamam, steam room, sauna and rain shower, plus massage.



# PURPOSE-BUILT

Starting from the drawing board

The SeaXplorer is the world's first purpose-built, Polar Code compliant expedition yacht with full capability for remote destinations — from extreme Polar to remote Tropical areas. From the very first sketches to the fully engineered range, DAMEN has designed every detail of these ruggedised yachts for the most extraordinary adventures anywhere on the planet.



*“While traditional yachts go out of their way to avoid scrapes on the hull, the SeaXplorer’s robust, unfaired hull is designed to go right into fast ice.”*

*Rob McCallum, Founding Partner, EYOS Expeditions*

SeaXplorer 90

# NOTHING ELSE LIKE IT

Fit for the ice

The SeaXplorer is the world's first private expedition yacht built to comply with demanding new environmental and safety rules for polar journeys. Entering into force in 2017, the IMO's new Polar Code is mandatory for any ship intending to visit the polar regions. The majority of the yachts will find it impossible to obtain a Polar Code certificate even those yachts with some light ice reinforcements.

The SeaXplorer will be built to Polar Code Category B, which means that you won't have to stop when you see ice, but can keep going deeper into the most spectacular polar wilderness. With her supreme ice qualities, the SeaXplorer can visit polar regions starting in the early spring when the wildlife is often at its best. Thrusting through challenging ice on its own, the SeaXplorer keeps going when others have to turn back.

	Polar Class SeaXplorer	Light ice reinforced yacht*	Traditional 'white' superyacht
Light ice hull reinforcement (Ice Class 1C)	✓	✓	✗
Heavy ice hull reinforcement up to Polar Class 6	✓	✗	✗
Icebreaking 90 cm first year ice	✓	✗	✗
Propulsion train with Ice Class reinforcement	✓	✗	✗
High bridge with excellent visibility, extended and enclosed bridge wings	✓	✗	✗
No weak hull appendages (eg stabilisers that cannot be retracted; exhaust outlets)	✓	✗	✗
Zero discharge, waste management system	✓	✗	✗

\* Yachts complying with the basic Finnish Swedish Ice Class Rules 1C

### Why stern first?

The SeaXplorer breaks through ice with its stern instead of its bow. Why? Because we won't compromise the bow's design for maximum comfort and seakeeping performance in challenging seas. Known as a double-acting hull, it's the best of both in one purpose-built design.



SeaXplorer 90



*"You can't look past the Polar Code if you want to truly experience Antarctica and the Arctic Circle."*

Mark Vermeulen, Product Director SeaXplorer

SeaXplorer 90

# EVOLUTION OF THE SEAXPLORER CONCEPT

“Over the last few years we’ve had a number of yachting clients approaching us with ideas to develop existing DAMEN platforms into truly capable expedition yachts. So we realised then that there was a market, but no suitable ships. That’s when we began detailed design and naval architecture for three purpose-built expedition yachts between 65 and 100 metres (213 to 328 feet).

“Nobody has done this before. We’re not just creating a pretty picture. DAMEN has put together a team of top experts and works with highly experienced partners like EYOS Expeditions. In fact, I think DAMEN is the only builder in the world that could realise the SeaXplorer range. DAMEN has the proven shipbuilding heritage with 5,000 ships built, financial security and the long-term vision of a family run enterprise.

“As the luxury yacht builder in the DAMEN Shipyards Group, our team here at AMELS brings the superyacht market knowledge and expertise in top end luxury lifestyles. That synergy between DAMEN and AMELS is a big part of what makes the SeaXplorer so unique. Together with DAMEN, we understood the crucial importance of exterior design. We brought in Azure Yacht Design & Naval Architecture to ensure the integrity of the yachting experience at the absolutely highest level.”



Rob Luijendijk,  
AMELS Managing Director

“Synergy between DAMEN and AMELS is a big part of what makes the SeaXplorer so unique.”



Ample space on the SeaXplorer 65’s open decks rivals traditional superyachts for enjoying sun and shade.

## THE SEAXPLORER RANGE

Starting with the 65-metre (213 ft) SeaXplorer, the Owner has the global capability and equipment for any destination on Earth, including a helicopter hangar. The next level up, the 90-metre (295 ft) SeaXplorer raises the bar with dedicated expedition capability and endurance. And then, the 100-metre (328 ft), 7,000 GT SeaXplorer makes the ultimate adventure possible, with two helicopters, more mission-specific equipment and expedition team accommodation.



SeaXplorer 65



SeaXplorer 90



SeaXplorer 100



# DREAM TEAM CREATES BEAUTIFUL CROSSOVER

Behind the SeaXplorer is the same dedicated DAMEN team of naval architects and engineers that introduced the market-changing Yacht Support range of vessels. SeaXplorer's Product Director Mark Vermeulen and Design Manager Jaap van der Velde both share yacht building backgrounds and engineering qualifications from the renowned Delft University of Technology.

**Explorer concepts are hot right now. What sets DAMEN's SeaXplorer apart?**

**Mark:** "The SeaXplorer is not just a creative drawing, it's a serious yacht with serious capability. The DAMEN way is to get it right, right from the start. We talk with clients and invest upfront in research and front-end engineering. We don't go to the market until we have an actual product with an actual price tag – purpose built and engineered from the Engine Room to the Crow's Nest."

**Jaap:** "We've also thought carefully about reducing the Total Cost of Ownership and how we can build efficiently for fast delivery. It helps make the SeaXplorer an attractive project."

**How did you go about creating the SeaXplorer?**

**Mark:** "Right from the start, we knew that we were creating something from scratch that had never been done before. The SeaXplorer is the perfect balance – a crossover really – between professional proven technology and superyacht exclusivity, with invaluable input from EYOS Expeditions, who have decades of experience from all over the world. These guys know what a real luxury expedition requires and they came with a long list of features to maximise operational capability."

**What's the story behind the SeaXplorer's striking looks?**

**Jaap:** "It's really a case of form following function. The exterior lines had to celebrate the ruggedised elements, the brute strength of icebreaking steel and the professional SEA AXE hull form, while seamlessly flowing into the classic faired and luxurious parts of the yacht. We brought in the talented exterior stylists from Azure Yacht Design & Naval Architecture, who captured that crossover beauty perfectly."

**Can Owners customise the SeaXplorer to their own requirements?**

**Mark:** "Sure, the Owner will bring their own interior designer to create their own individual atmosphere. The number, size and layout of the guest areas can be adjusted to the Owner's wishes. All technical areas stay in place. The Owner doesn't have to tackle any of those, our specialists at DAMEN have already!"

**Jaap:** "Of course, if the Owner wants to configure some mission-specific functionality, say a floatplane or laboratory, we have a dedicated team with all the expertise to make it happen. There are a lot of possibilities and our focus is realising the client's vision for their adventures at sea."



*"The DAMEN way is to get it right, right from the start."*

*Mark Vermeulen,  
Product Director SeaXplorer*



SeaXplorer 90

*"Realising the client's vision for their adventures at sea."*

*Jaap van der Velde, Design Manager SeaXplorer*

# POWER IN STYLE

## Beauty in high functionality

The SeaXplorer's crossover capabilities presented an external design challenge. How do you go about creating seamless lines for a type of yacht that's never been seen before? While parts of the yacht, in particular the luxury accommodation, are faired to perfection, other parts of the yacht, such as the SEA AXE bow and icebreaking stern, require the raw brute strength of steel. DAMEN selected Azure Yacht Design & Naval Architecture to come up with the answer. Their clever and elegant solution details subtle design transitions from professional to luxury finishes while celebrating the yacht's virile and well-built beauty.

*"This process, the aesthetic challenge of connecting two worlds as purely as possible, led to a modern, unique design that is instantly recognisable."*

*Erik Spek, Director Azure Yacht Design & Naval Architecture*

### About Azure

*The renowned and highly professional design team at Azure Yacht Design & Naval Architecture rose to the challenging task of creating the SeaXplorer's striking exterior lines. Working on yachting projects around the world, the Netherlands-based company aims to push the boundaries of yacht design, creating integrated and technically feasible designs.*

### CAST A LONG SHADOW

When you return to society, just as the great explorers of bygone eras, you'll be met with awe, fascination and we dare say a smidgen of envy.



SeaXplorer 100



LUXURY GUEST AREA FAIRED AND PAINTED WITH HIGH GLOSS COATINGS

TRANSITION AREA

ICEBREAKING STEEL HULL UNFAIRED AND PAINTED IN SATIN FINISH

SeaXplorer 65

NOW, DISCOVER TRUE CAPABILITY

# GLOBAL AUTONOMY



Join the Captain and guides in the ship's primary control centre, up to 11 metres above the water, with full glass large windows and extended and enclosed bridge wings.

**OPEN BRIDGE**

**OBSERVATION LOUNGE**

Enjoy spectacular vantage points from the large observation lounge with skylights and large windows, plus the unique outdoor bow point observation deck.

SEAXPLORER 65



# EXPEDITION READY!

**ULTIMATE HELI OPS**

Fully certified helideck with max take-off weight up to 5,000 kg and fully enclosed helicopter hangar with lift system, plus fuel storage and maintenance facilities.

**SEA AXE BOW**

Comfortable sea going behaviour thanks to the DAMEN's uniquely stable SEA AXE bow form.

SEAXPLORER 90

## WHAT DEFINES TRUE ENDURANCE?

It's not how far you can go. It's how long. The SeaXplorer can remain on station in remote areas for several weeks, with provisions for 40 days of full luxury service with no port calls.

- Gourmet fine dining with large, professional galley
- Provisions management, including spacious temperature and humidity controlled cold store, freezer store, dry store and wine cellar
- High capacity water makers
- Workshops and ample storage for spare parts
- Fuel capacity to traverse any ocean with ease
- Waste management and recycling

## INDEX

- 1 ULTIMATE DIVE CENTRE**  
Dive equipment, wetsuit drying room, facilities for blending mixed gas, and the optional added safety of a Decompression chamber.
- 2 OUTSIDE FUN**  
Luxury decks for sunbeds and loungers, plus the swimming pool with underwater lighting and Sun Deck Jacuzzi.
- 3 RELAXATION**  
Spacious Lower Deck Wellness Centre with hamam, steam room, sauna with rain shower, plus a fully equipped gymnasium.
- 4 SEA AXE BOW**  
Comfortable sea going behaviour thanks to DAMEN's uniquely stable SEA AXE bow form.
- 5 CROW'S NEST**  
Luxurious nook with panoramic views more than 20 metres above the water, the height, of a seven-storey building.
- 6 EXPEDITION-SIZE VOLUME**  
Extra large crew areas for accommodating more crew and expedition staff for longer periods, plus huge stores for provisions, expedition gear and waste management.

- 7 LUXURY LIFEBOATS**  
Up to 9-metre davit-launched lifeboats, which also double as luxury limo tenders.
- 8 WATERLINE ENTRY / EGRESS**  
Boarding gates, just above the waterline, lead up to the mudroom, a transition zone to shed layers of polar gear before stepping back into luxury.
- 9 EXPLORE THE DEEP**  
Extra storage for personal submersibles, fly-by-wire ROVs, and all the necessary support equipment.
- 10 STERN ICEBREAKING**  
Safe passage through the ice thanks to the icebreaking stern and reinforced Polar Class hull.
- 11 VAST TOY STORAGE**  
Below deck, there is no shortage of space for canoes, kayaks, amphibious craft, hell-ski gear and more.
  - Motorcycles
  - Offroad 4-wheel-drive vehicles
  - Mountain bikes
- 12 TENDER STORAGE**
  - 12-metre DAMEN Cabin RHIB for dive support, sonar, fishfinders, submersible handling/standby
  - 12-metre limo tender
  - 4 x 5-metre heavy-duty Zodiac MK 5

- 13 DRY-IN EXPEDITION TENDER**  
With the advanced Launch and Recovery System (LARS) for the SeaXplorer's 7.5-metre DAMEN RHIB with waterjet propulsion, guests step on board the tender on Main Deck, staying dry and comfortable, and are on the water within minutes.
- 14 7-STAR ACCOMMODATION**  
Top luxury suites for all your guests with interiors by the designer of your choice. State-of-the-art entertainment and A/V systems.
- 15 SKY LOUNGE**  
Even in polar climates, the Sky Lounge's folding glass doors and outdoor heating create the ideal spot for an indulgent hot chocolate and uninterrupted panoramas.

# START THE TIMER AS OUR ADVENTURE UNFOLDS:

**0:00:00**

It's the call we've been waiting for. "Humpback whales! About 600 metres off the bow."

**0:01:30**

A minute later, six of us and our guide gather in the Main Deck mudroom [1] to kit up with our cold weather gear.

**0:04:00**

We're ready to go, and we can step straight on board the 7.5-metre rigid inflatable [2] while it's still on deck. The professional launch and recovery system [3] starts lowering us within seconds.

**0:07:00**

We're on the water, sea spray flying! With the waterjet propulsion, our tender is quickly outpacing the SeaXplorer, which hasn't even come to a stop yet.

**0:11:30**

Amazing, we're just metres from the pod of whales!

**0:12:00**

Behind us we see the SeaXplorer's stern tender garage's door [4] open. The guide tells us that our filmmaker is heading out to shoot our encounter with the whales.

**0:27:30**

We're blown away by the experience and can't wait to share with the rest on board. There's a squall closing in so we head back.

**0:29:00**

The SeaXplorer is holding station with DP so we can pull alongside the waterline boarding gate [5]. From there, the internal staircase takes us one deck up to the mudroom.

**0:36:00**

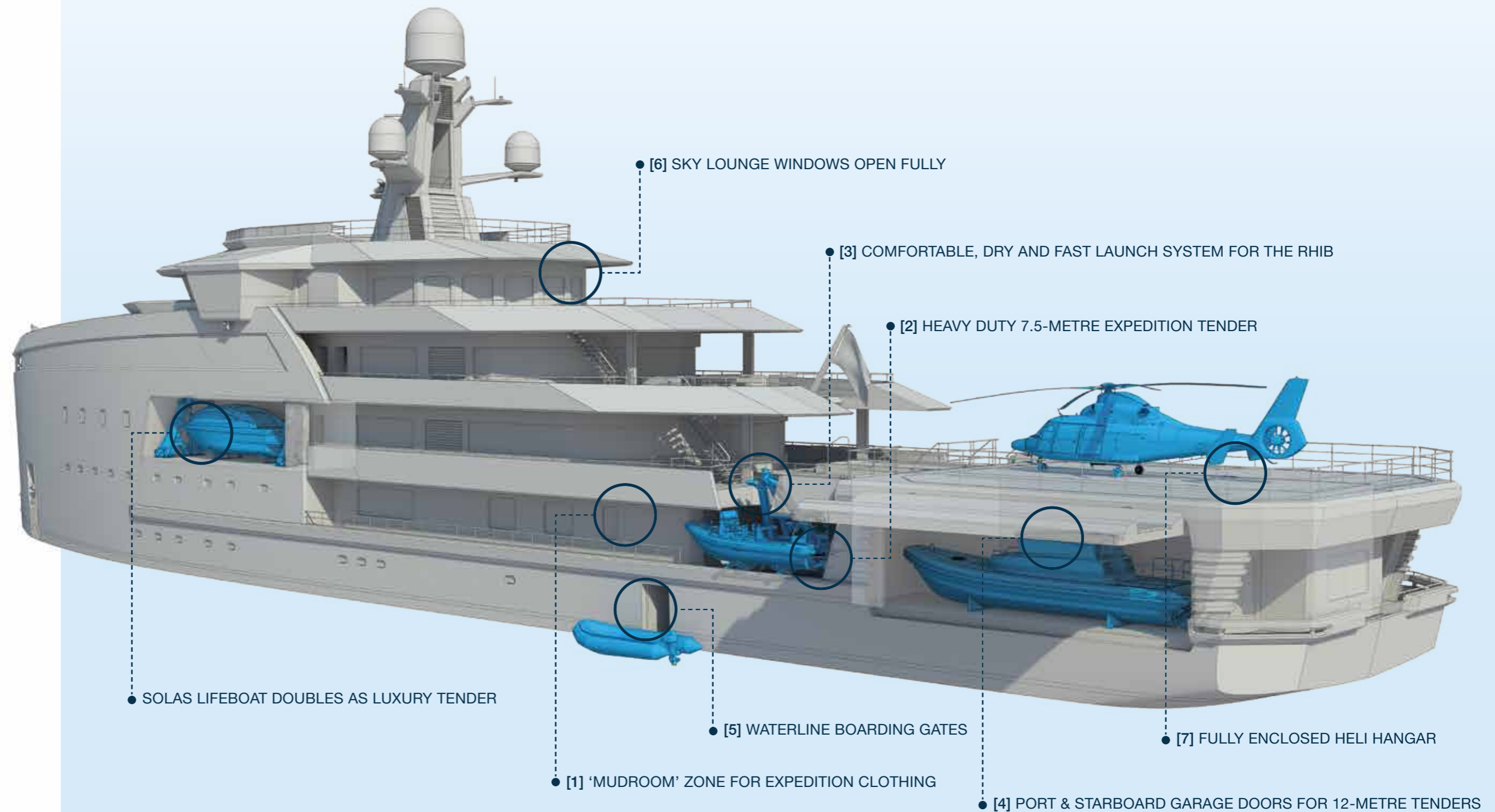
Warmed up, we head to the Bridge Deck lounge [6] for a refreshment and realise that we're already underway again.

**0:42:30**

We can see the helideck hangar doors slide open and the helicopter emerges on the lift [7]. Our guide reminds us that we have an hour to relax before our heli-ski trip. Smiles all around...

# EXPEDITION LOGISTICS

Never miss a chance encounter



There are plenty more tenders and toys parked inside the SeaXplorer 90, including a 12-metre limo tender, a submersible, waverunners, kayaks and much more.

# NO COMPROMISE ON THE SUPERYACHT EXPERIENCE

The largest SeaXplorer accommodates up to 30 guests in absolute luxury and comfort, highly customised by a leading interior designer of your choice and finished with meticulous attention to detail and the highest quality of craftsmanship. In the guest areas, the SeaXplorer's interiors can match the top level of an AMELS superyacht, bearing the stamp of your individual originality. Through the synergy of DAMEN and AMELS, the SeaXplorer team has access to the Dutch luxury yacht builder's deep understanding and long experience of working with the most renowned yacht designers, bringing the unique vision of each Owner to life.

*Full height windows ensure guests in the SeaXplorer's Main Saloon, Owner's Suite and Sky Lounge enjoy comfort and style while always connected to Earth's most spectacular destinations.*



SeaXplorer 90

Upper Deck main saloon

# WARM NIGHTS

Coming together to relive moments shared during the day, and anticipate the marvels of the next, you and your guests experience formal dining in the SeaXplorer 90's wonderfully warm and spacious main saloon on Upper Deck.



# ONCE IN A LIFETIME VIEWS

Observation lounge

You don't have to huddle up in one of the tenders to enjoy this incredible wildlife and scenery, thanks to the SeaXplorer's observation lounge on the Owner's Deck. Here you can follow the yacht's progress from a stunning vantage point, discuss destinations with family and friends over drinks at the bar, or browse through atlases and charts in the library. And there's no place on any yacht that can compare with the SeaXplorer's innovative outdoor bow point observation deck with powerful pedestal-mounted binoculars.

*"The outdoor bow point observation deck has quickly become one of the SeaXplorer's most defining features."*

*Jaap van der Velde, Design Manager SeaXplorer*





## ON TOP OF THE WORLD

### Bridge Deck Sky Lounge

Take the SeaXplorer 90's central staircase or elevator from Main Deck to Bridge Deck – that's four guest decks – and you are up where the action is. The Sky Lounge, which opens fully to the aft deck for charming, informal and heated outdoor relaxation, connects with the Wheelhouse where you can follow the expedition's progress and talk with the Captain.



### Owner's Suite

## PURE INDULGENCE

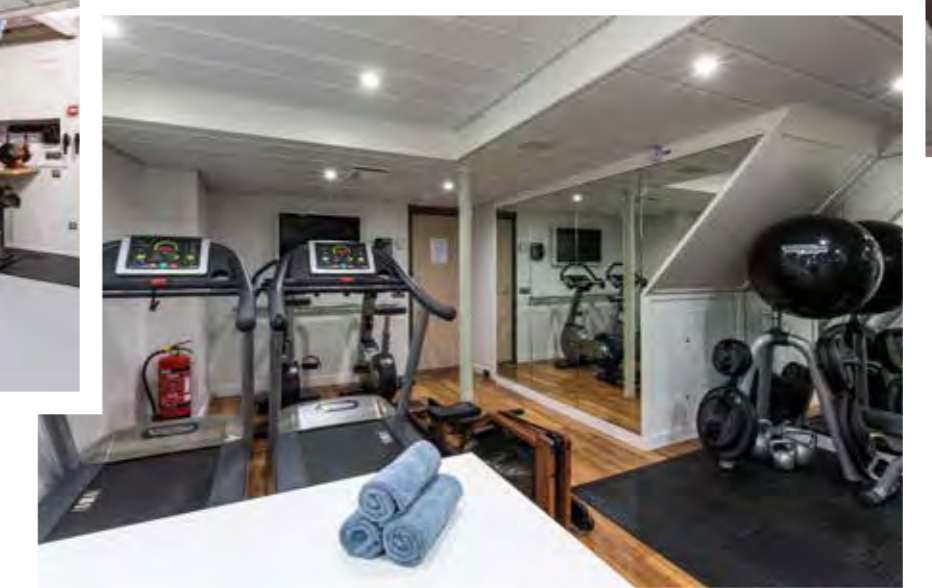
Perhaps no area on board captures the essence of the SeaXplorer's crossover concept as well as the Owner's Suite, which combines the ultimate in luxury yachting comfort, elegance and indulgence with stunning views of places other yachts can't reach. On the SeaXplorer 65, the wide curving windows of the Owner's stateroom and office connect with the aft outdoor area.

# PROFESSIONALS

Top crews will be drawn to the innovative SeaXplorer, but this is no day boat in the Med. They're going to have their work cut out for them. In polar regions they must navigate icy waters fraught with potential hazards, and then safely operate and maintain complex machinery in freezing conditions. In these remote areas, they'll have to keep up the highest service levels for up to 40 days at a time. We've made sure the SeaXplorer does its share, with smart crew logistics and the professional facilities, equipment and machinery that your crew need to make your expedition a success.

Within the SeaXplorer range, crew features include:

- MLC compliant cabins for up to 50 crew, including expedition guides, ice pilot, interpreter, divemaster, submersible pilots, helicopter crews, physician, photographer/filmmaker and security
- Spacious Captain's cabin and adjoining Captain's office
- Ship's office, Expedition Operations Centre, mess, lounge, gymnasium, Internet cafe, hospital and workshops
- Top navigation and communications systems, including global connectivity
- DAMEN quality professional engine room and machinery
- Optimised design for crew safety and wellbeing



*A typical cabin for 2 crew members, crew gym and professional engine room illustrate the top DAMEN standard your crew need to work well for longer periods at sea.*

# RESEARCH & DEVELOPMENT

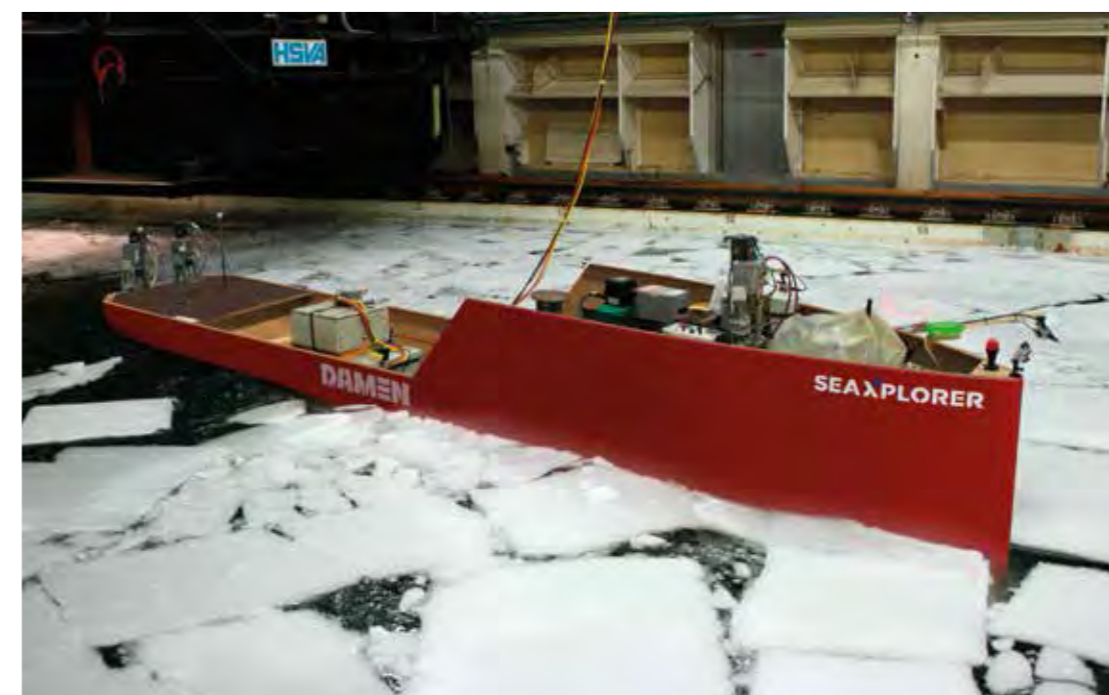
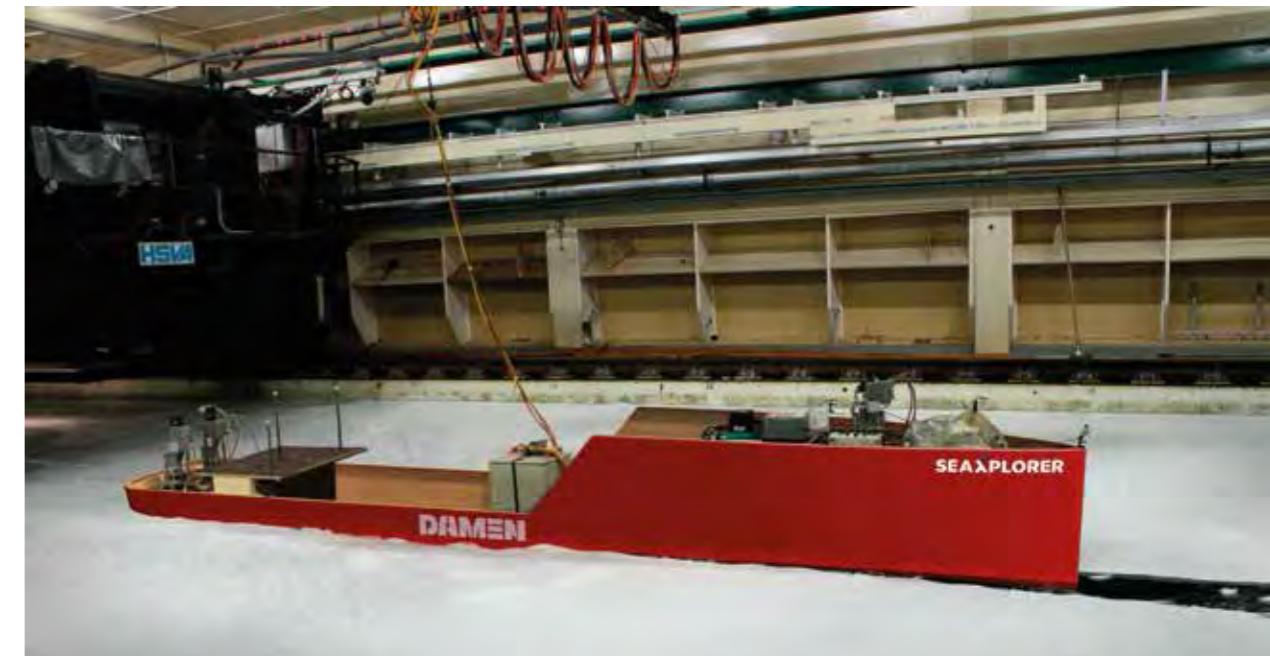
## DOUBLE ACTING HULL

During the development of the SeaXplorer we had to design the right hull shape for a true expedition vessel with global capabilities – equally effective in ice conditions, tropical conditions, a rough seaway and sometimes even in severe weather. Optimising the hull for icebreaking would have directly compromised the seagoing behaviour, so we decided on a double acting hull. This means the SeaXplorer has a stern optimised for icebreaking conditions, while the bow benefits from its SEA AXE design.

## THE SEA AXE SUCCESS STORY

The SeaXplorer's unique seakeeping SEA AXE hull design slices effortlessly through the waves instead of slamming into them, as conventional vessels do. Based on DAMEN's patented Axe Bow concept, the design shows reduced peak accelerations and slamming in a seaway, which means far greater sea kindness and minimal discomfort and inconvenience for passengers. DAMEN has sold more than 160 SEA AXE vessels since 2005, mostly for Offshore Oil & Gas and Offshore Wind markets, as well as Coast Guards and Navies around the world.

DAMEN'S INNOVATIVE SEA AXE BOW DESIGN HAS PROVEN FAR MORE COMFORTABLE IN A SEAWAY THAN CONVENTIONAL VESSELS.



Testing at the Hamburg Ship Model Basin shows the double-acting hull's icebreaking performance in high ice concentrations of up to 90 cm first year ice.

## THE MANY FACES OF ICE

In ice floes of up to 70% ice concentration, the SeaXplorer can sail ahead. When the ice concentration becomes higher, or even solid, the SeaXplorer turns and uses its transom to break the ice. In optimising this hull shape, we felt that it was vital to demonstrate the design's performance in polar conditions. And one of the best places to do that is the Hamburg Ship Model Basin (HSVA). Putting the SeaXplorer to the test shows its highly functional stern icebreaking performance through extensive testing in conditions such as level ice and broken ice, including manoeuvring in ice conditions.

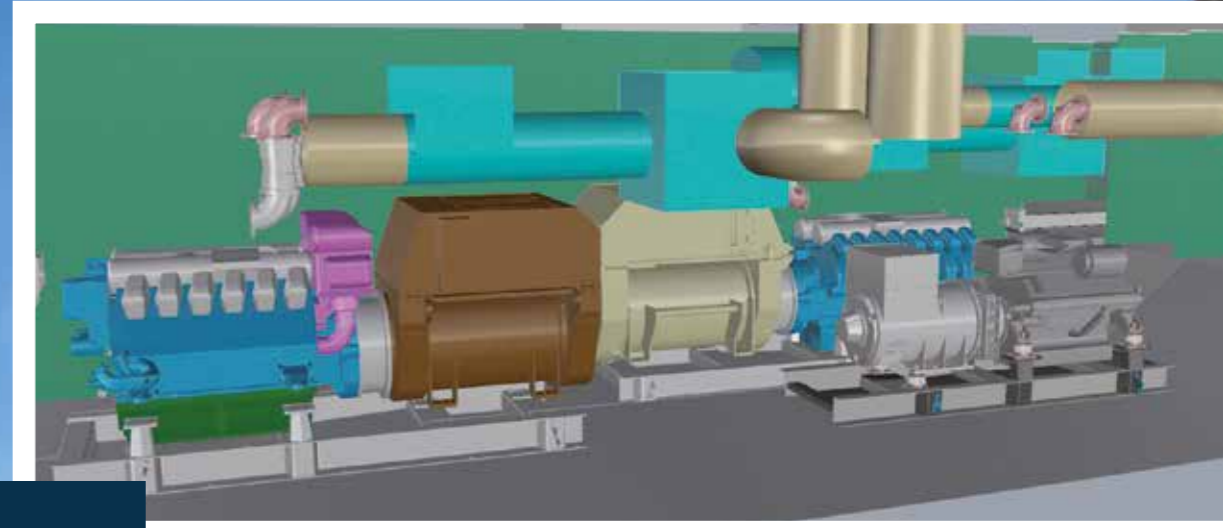
*"There's nothing ordinary about the SeaXplorer. This is innovation based on solid research findings and more than a year of disciplined pre-engineering and development."*

*Jaap van der Velde, Design Manager SeaXplorer*

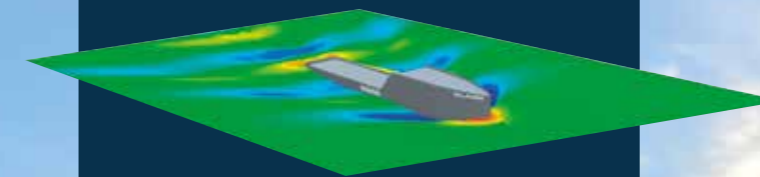
# CAREFUL WITH FRAGILE ENVIRONMENTS

Entering pristine, virgin territory bestows a hefty responsibility on all visitors – a responsibility that we know our clients take seriously. So, although the SeaXplorer might be a heavyweight when it comes to expedition capability, it leaves a light footprint on the environment.

*Inside one of the modern engine rooms, the diesel-electric water-cooled generator set features soot filters as well as SCR systems to reduce NO<sub>x</sub> emissions.*



## MINIMAL RESISTANCE



We have optimised the hull design with Computational Fluid Dynamics (CFD) to reduce resistance and increase the efficiency of the propellers. This delivers increased capability as well as better fuel efficiency and lower Total Cost of Ownership.

## A LIGHT FOOTPRINT

- Sailing for long periods in Zero discharge mode
- Exhaust gas soot filters
- Engine SCR systems for reducing NO<sub>x</sub>, compliant with the new IMO TIER 3 rules that apply from 2016 for all ships with a global sailing area
- Waste heat recovery for efficient air conditioning, heating as well as potable water and pool heating
- Waste management system with large holding tanks, plastics disposal, refuse separation, glass crusher, compactor, cooled garbage store, and onboard incinerator
- Polar Class double-skinned fuel storage tanks as an extra precaution to avoid oil spills

# CAREFUL WITH FAMILY AND FRIENDS

Your wild adventures may take you to the harshest and most remote corners of the planet, but with the SeaXplorer that doesn't mean putting the comfort and safety of your guests at risk. The proven seakeeping performance of DAMEN's SEA AXE hull form combined with excellent active stabilisation systems (fin stabilisers that are retractable for ice conditions) make the SeaXplorer a comfortable ride even in severe weather. Plus, the considerable onboard power and propulsion can master any conditions, while solid engineering keeps noise and vibrations levels down to typically low yacht levels.

## MANAGING RISKS

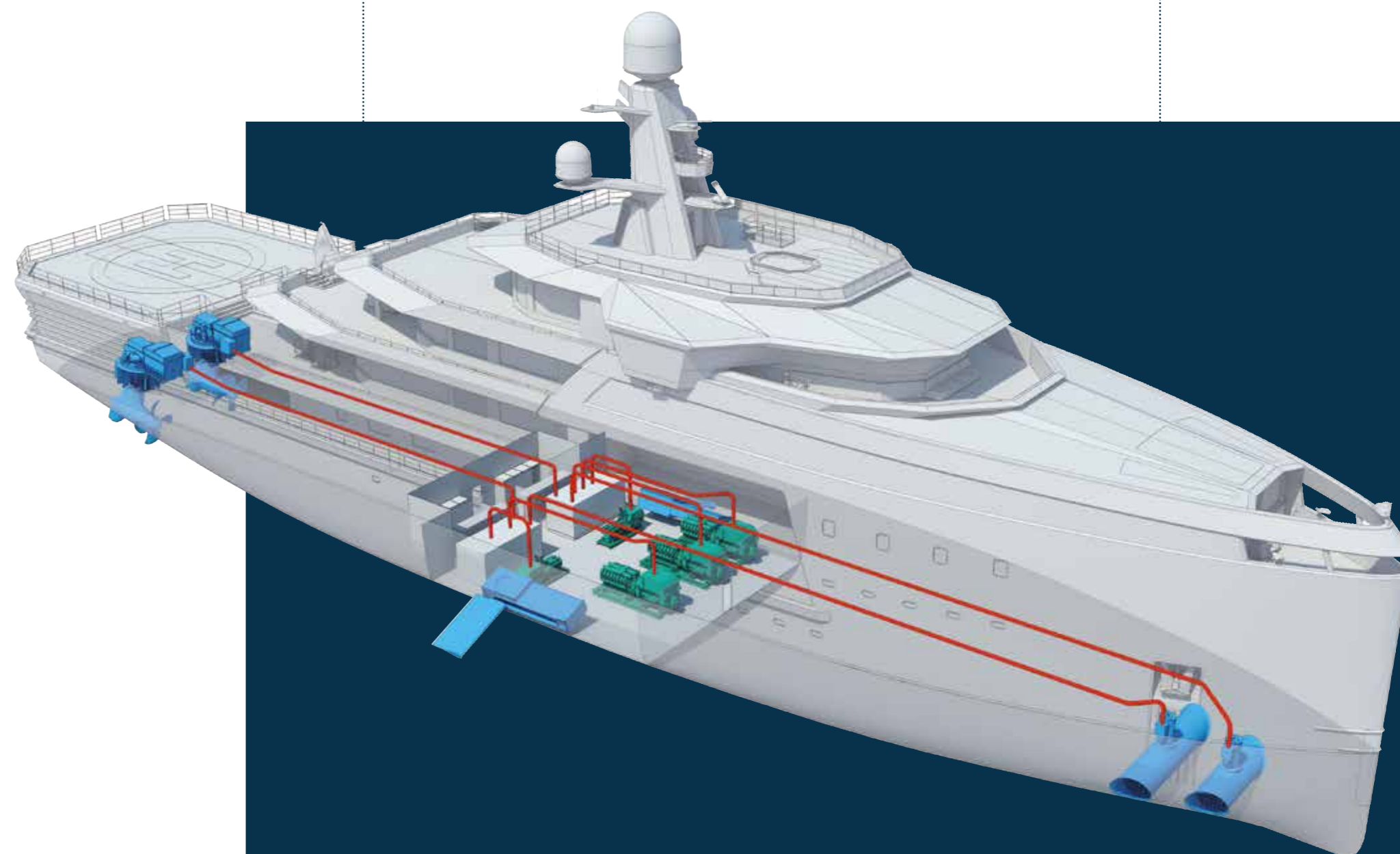
- Ice radar, night vision camera systems and forward-looking sonar
- Systems to detect and avoid unwanted encounters and other civil challenges
- Hospital and accommodation for expedition physician, comprehensive remote location data-link for external assistance with diagnostics
- Full backup and system redundancy for extra layer of reliability
- SOLAS compliant safety standards
- Fully equipped survival and emergency equipment
- No compromises on high standard lifeboats, up to 9 metres

*"You can safely, and comfortably, reach the parts of our planet that are impenetrable for most yachts."*

Mark Vermeulen,  
Product Director SeaXplorer

## DYNAMIC POSITIONING

Known as DP, Dynamic Positioning is a high-end propulsion technology that uses a combination of thrusters and software to keep the yacht in one exact position (holding station). The SeaXplorer uses DP to safely launch tenders without anchoring and approach glaciers with precision in poorly charted waters and among unpredictable ice floes.



*Safe and comfortable even in extreme conditions, the SeaXplorer 90 relies on a robust diesel-electric power configuration, retractable fin stabilisers, two 3 MW 360-degree azimuth thrusters and two 350 kW bow thrusters.*

VIEW THE RANGE 65 TO 100 METRES

# SEAXPLORER 65

65.00 metres (213 feet) / 2,000 GT

# SEAXPLORER 90

90.00 metres (295 feet) / 5,000 GT

# SEAXPLORER 100

100.00 metres (328 feet) / 7,000 GT

## THE RANGE

DAMEN has carefully developed its SeaXplorer range of expedition yachts with market-leading innovations and hundreds of expedition-specific features. Each yacht is fully pre-engineered with the highest level of naval architecture expertise and the Owner can customise the luxury guest accommodation with the interior designer of their choice. Talk to us about your adventure and how the SeaXplorer can make it possible.



### GUESTS

12



### CREW/ EXPEDITION STAFF

20



### EQUIPMENT

1 HELICOPTER



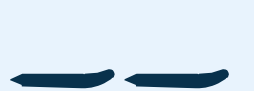
1 RESCUE BOAT



1 DIVE SUPPORT BOAT



2 ZODIACS



1 SUBMERSIBLES



4 WAVERUNNERS



### MAIN DIMENSIONS

Length overall	65 metres (213 feet)
Beam moulded	14.00 metres (46 feet)
Depth at side	6.00 metres (20 feet)
Draught (Max Full Load)	4.00 metres (13 feet)
Gross tonnage	2,000 GT
Speed	15.0 knots
Propulsion power	3,500 kW
Helicopter max take-off weight	4,500 kg
Helicopter hangar length	12.00 metres (39 feet)
Helicopter D value	13.5
Dive centre	1

### GUESTS

22



### CREW/ EXPEDITION STAFF

36



### MAIN DIMENSIONS

Length overall	90 metres (295 feet)
Beam moulded	16.0 metres (53 feet)
Depth at side	8.00 metres (26 feet)
Draught (Max Full Load)	5.50 metres (18 feet)
Gross tonnage	5,000 GT
Speed	16.0 knots
Propulsion power	6,000 kW
Helicopter max take-off weight	5,000 kg
Helicopter hangar length	14.00 metres (46 feet)
Helicopter D value	15
Dive centre	1

### EQUIPMENT

1 HELICOPTER



1 EXPEDITION RHIB



2 LIFEBOATS



4 ZODIACS



1 DIVE SUPPORT BOAT



1 LUXURY TENDER



2 SUBMERSIBLES



4 WAVERUNNERS



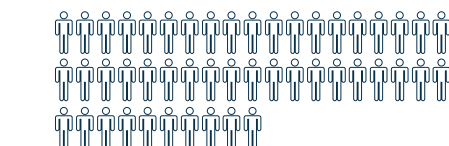
### GUESTS

30



### CREW/ EXPEDITION STAFF

50



### MAIN DIMENSIONS

Length overall	100 metres (328 feet)
Beam moulded	18.0 metres (59 feet)
Depth at side	8.00 metres (26 feet)
Draught (Max Full Load)	6.00 metres (20 feet)
Gross tonnage	7,000 GT
Speed	16.0 knots
Propulsion power	8,000 kW
Helicopter max take-off weight	6,000 kg
Helicopter hangar length	15.00 metres (49 feet)
Helicopter D value	16
Dive centre	1

### EQUIPMENT

2 HELICOPTERS



2 LIFEBOATS



4 ZODIACS



1 EXPEDITION RHIB



1 DIVE SUPPORT BOAT



1 LUXURY TENDER



2 SUBMERSIBLES



4 WAVERUNNERS



The SeaXplorer 100 is currently under development. For further details about the largest expedition yacht in our range, please contact us.

GENERAL ARRANGEMENT

# SEAXPLORER 65

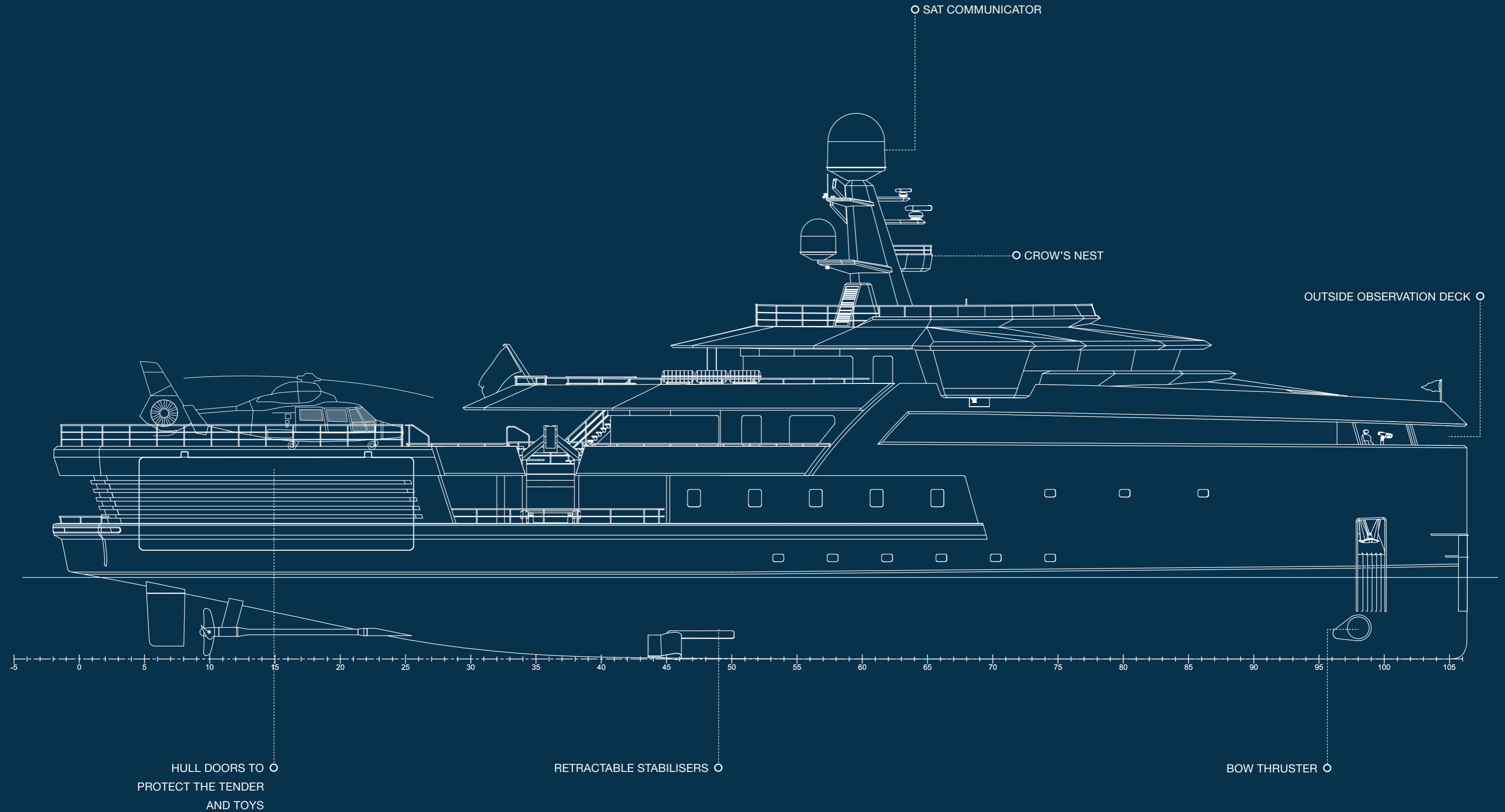
65.00 metres (213 feet) / 2,000 GT

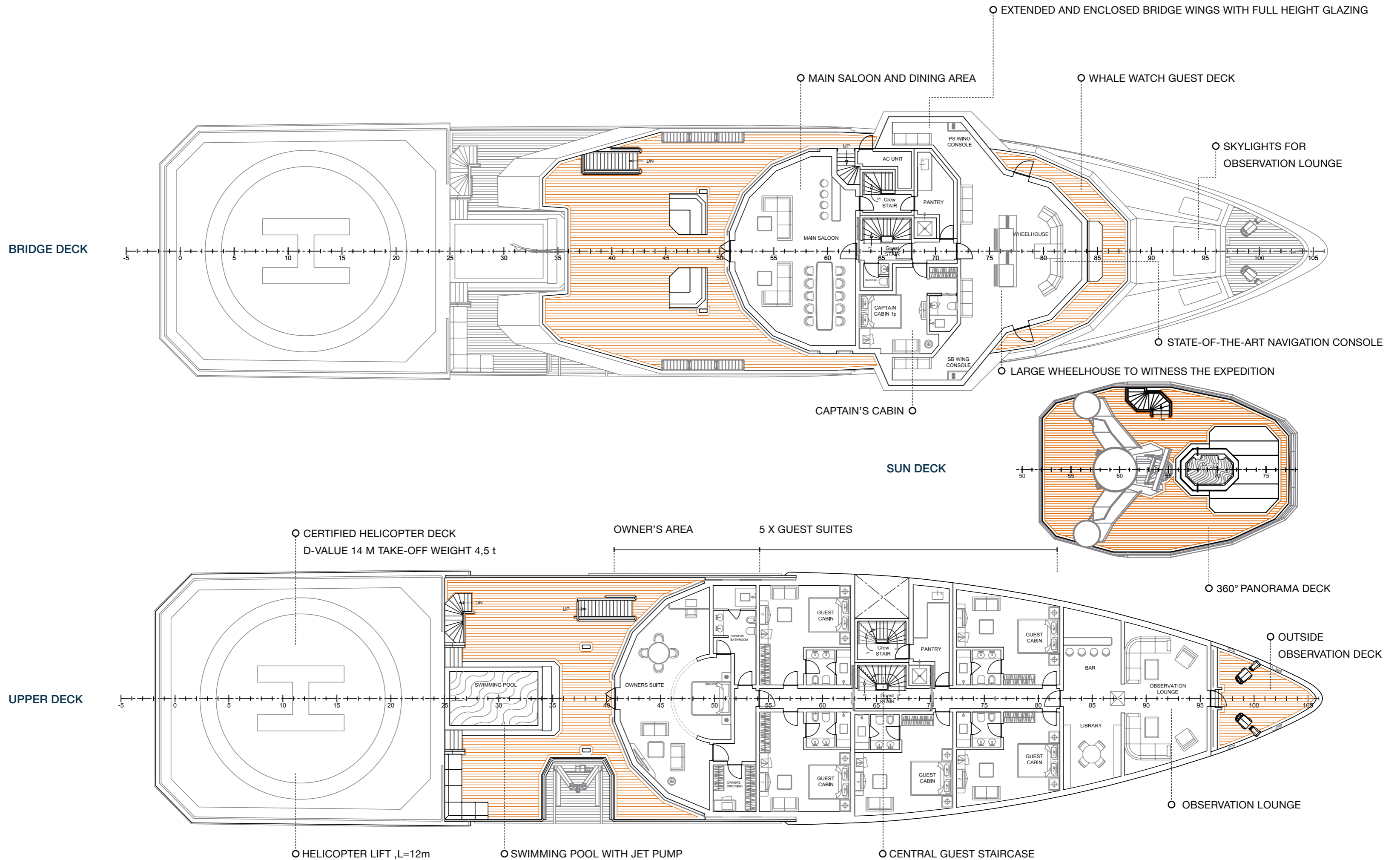


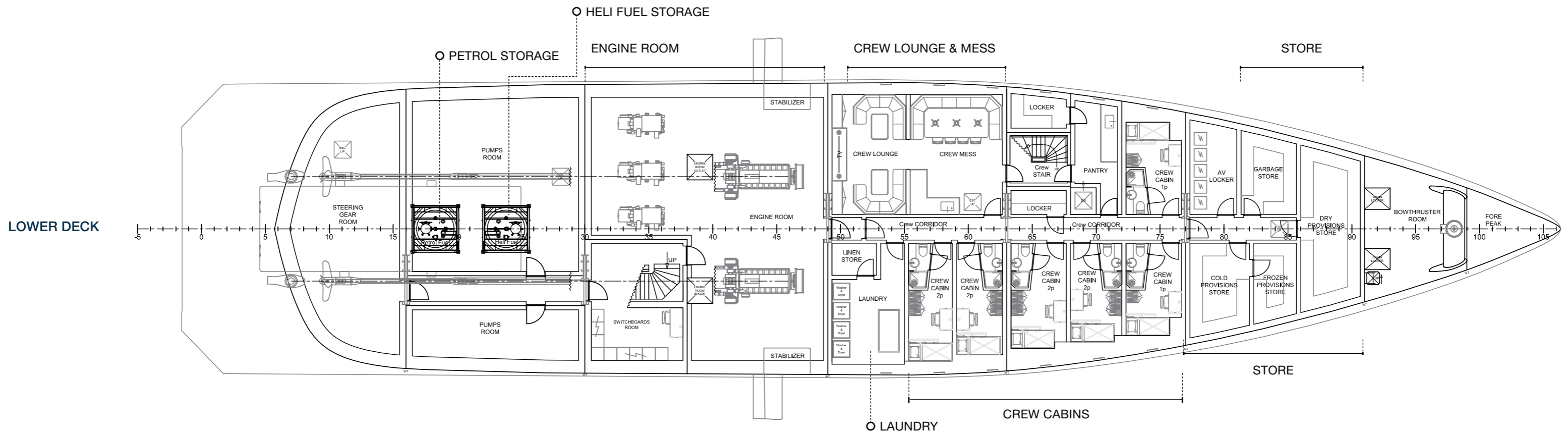
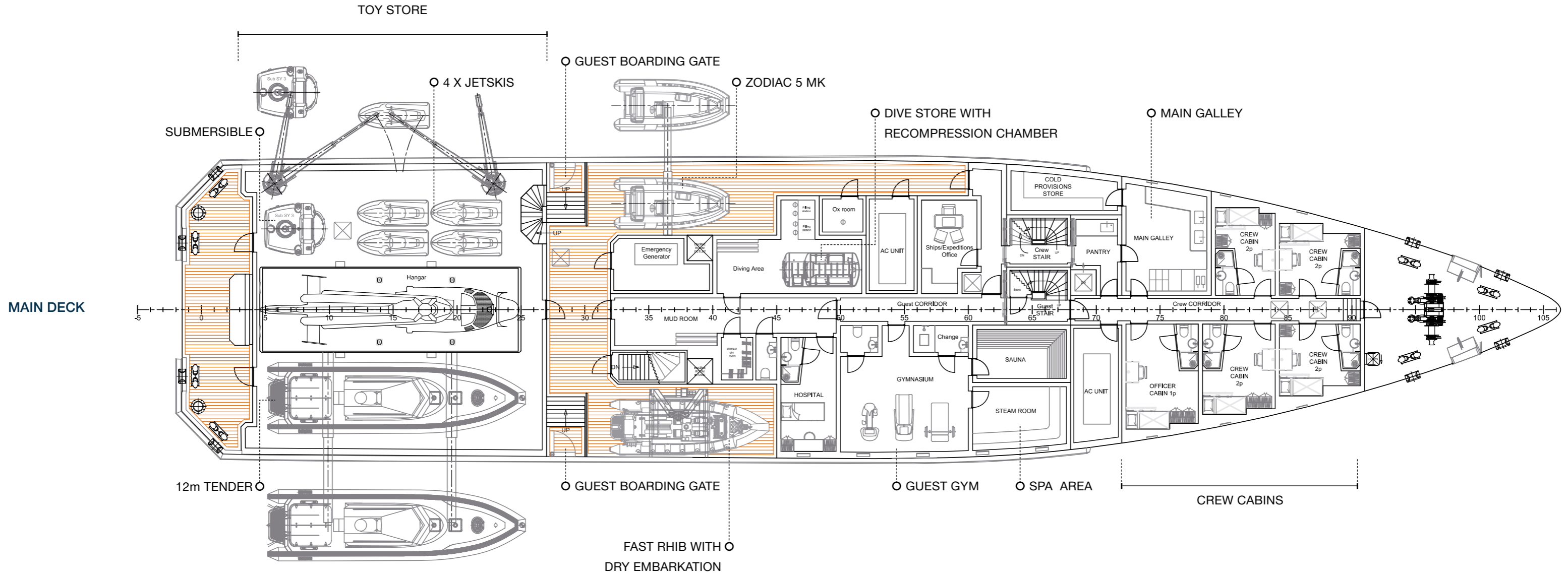


# SEAXPLORER 65

65.00 metres (213 feet) / 2,000 GT







GENERAL ARRANGEMENT

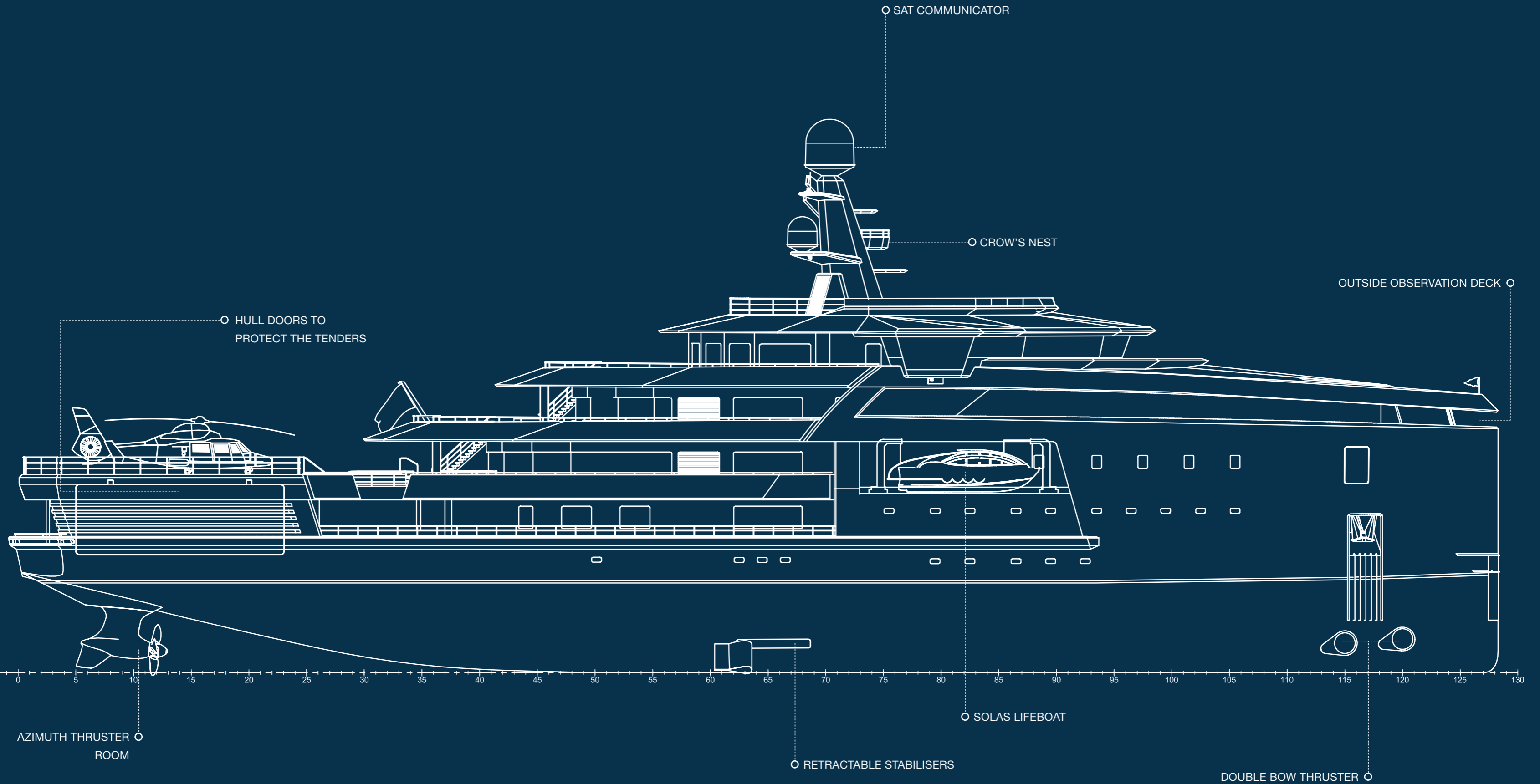
# SEAXPLORER 90

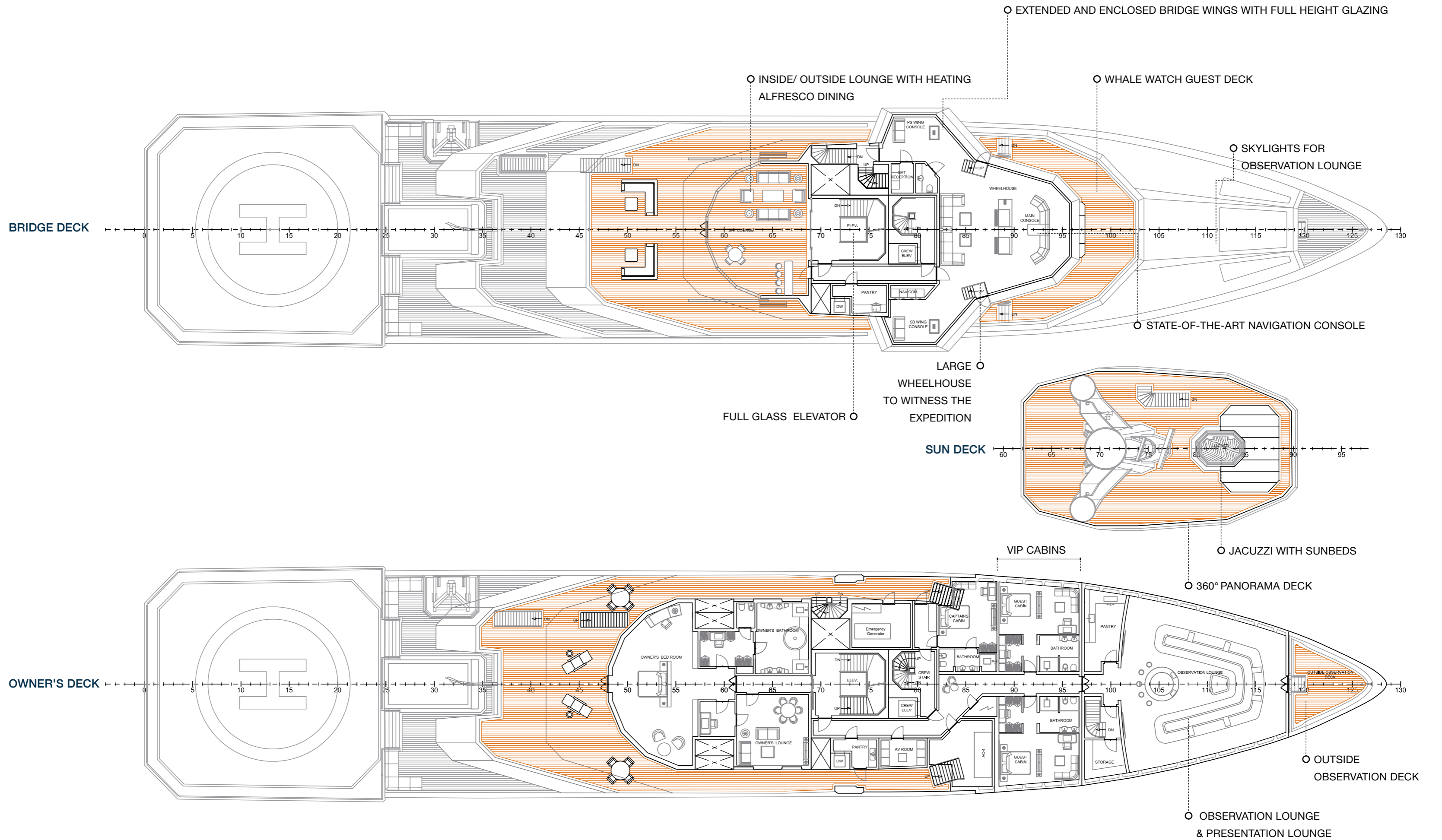
90.00 metres (295 feet) / 5,000 GT

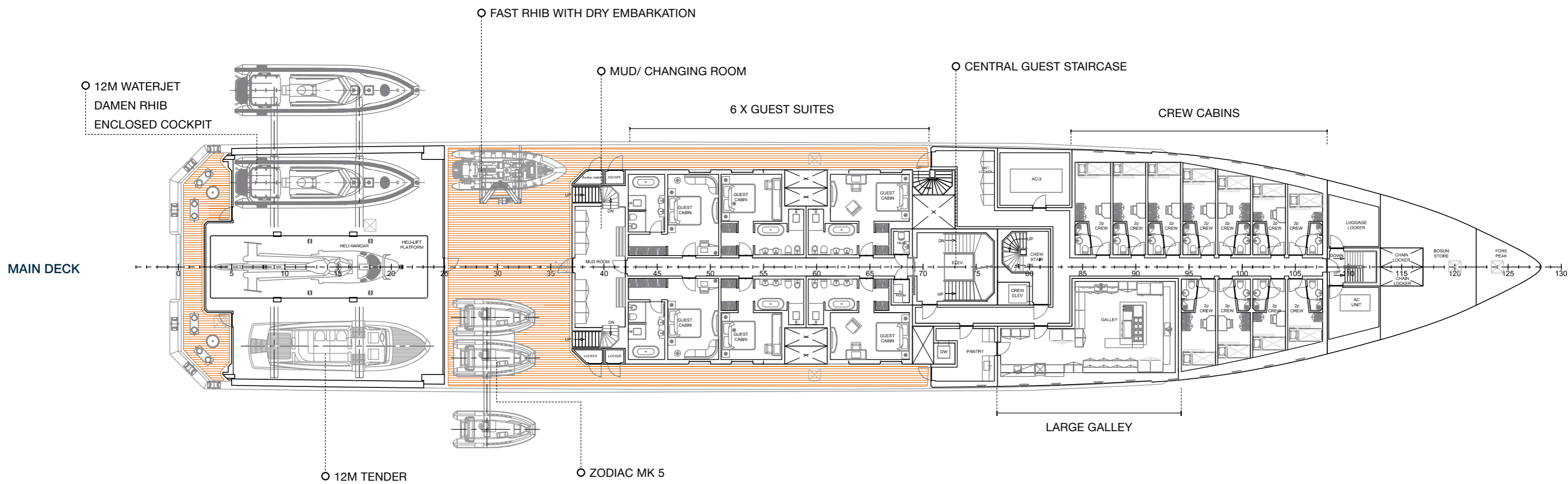
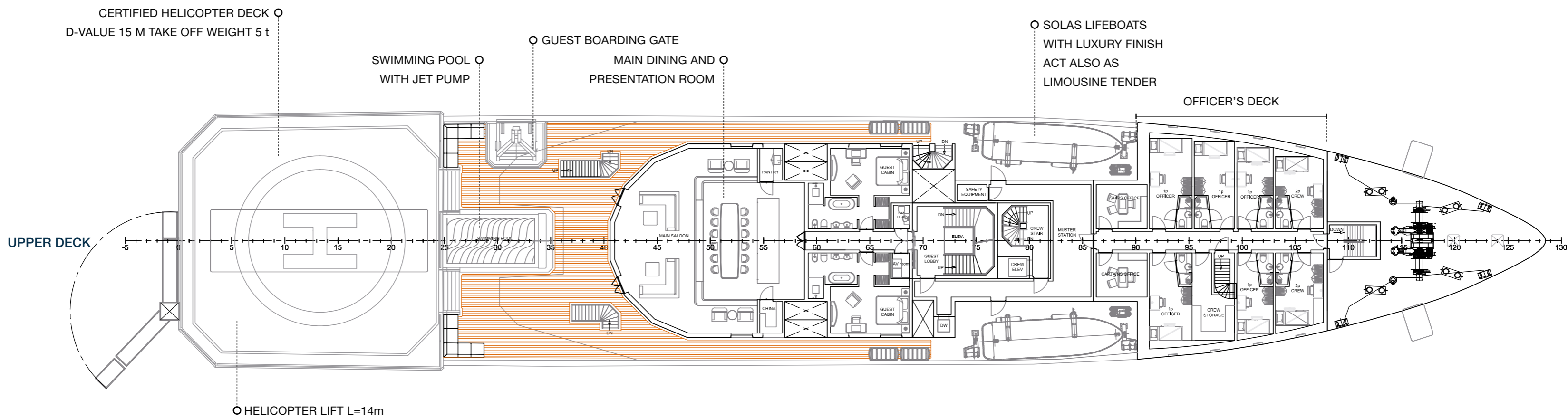


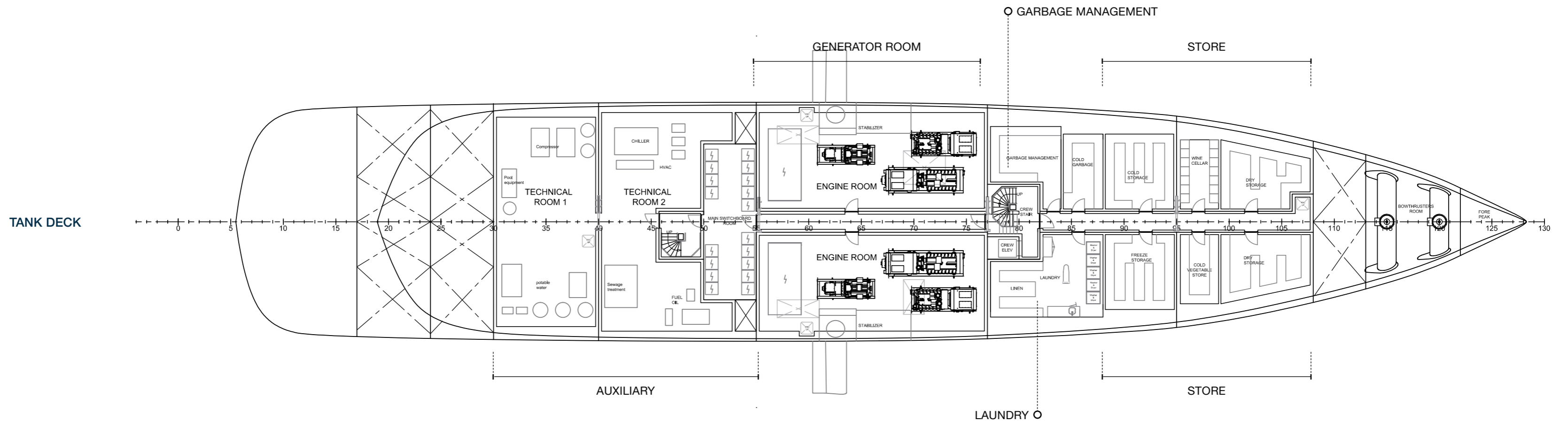
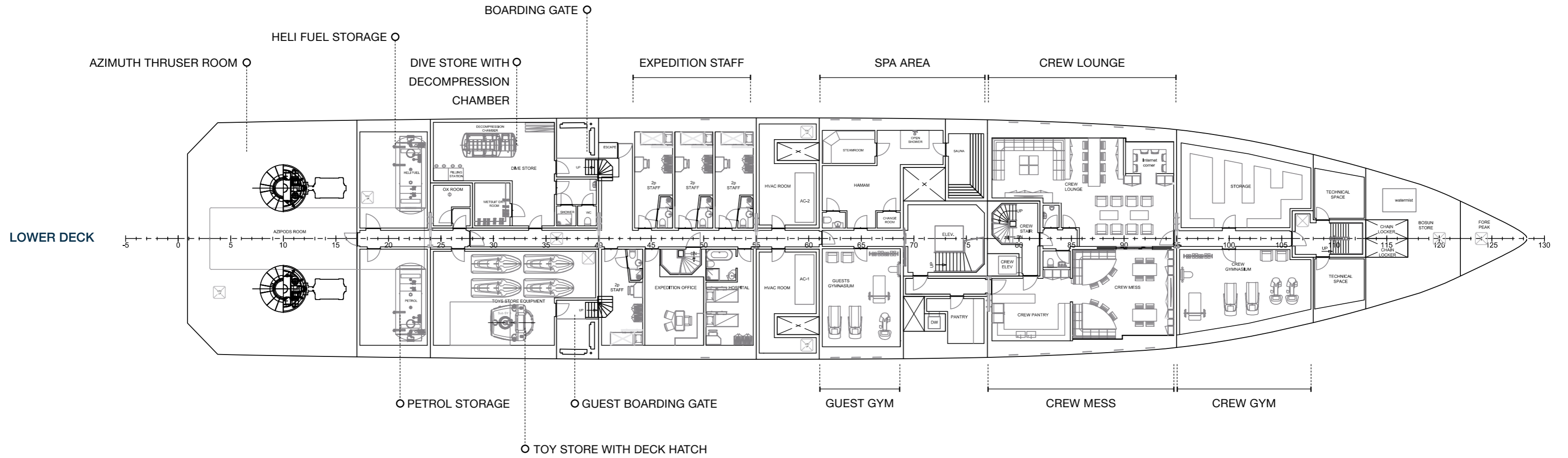
# SEAXPLORER 90

90.00 metres (295 feet) / 5,000 GT













## DAMEN Yachting Expertise

The SeaXplorer is a product of DAMEN's Yacht Support and SeaXplorer Product Group, a dedicated team of experienced yacht building experts based in the Netherlands. In addition, Dutch luxury yacht builder AMELS is part of the DAMEN Shipyards Group. With more than 50 superyachts delivered, AMELS has an intimate understanding of the yachting experience at the highest level. AMELS' highly successful Limited Editions range has an excellent reputation among owners as well as managers, captains and crews.

# THE DAMEN FAMILY HERITAGE

In 1927 a small Dutch shipyard was established by two brothers. Since buying the company from his father in 1969, Kommer Damen has built up DAMEN Shipyards Group into one of the world's largest and most financially stable shipbuilders. The company has delivered more than 5,000 vessels and has a € 2 billion annual turnover, but DAMEN has never lost its family values or its deep respect for its maritime heritage.



*Today, the Damen family are very much an active part of the management team, including Chairman Kommer Damen and Arnout Damen, Chief Commercial Officer.*



# THE DAMEN GLOBAL QUALITY STANDARD

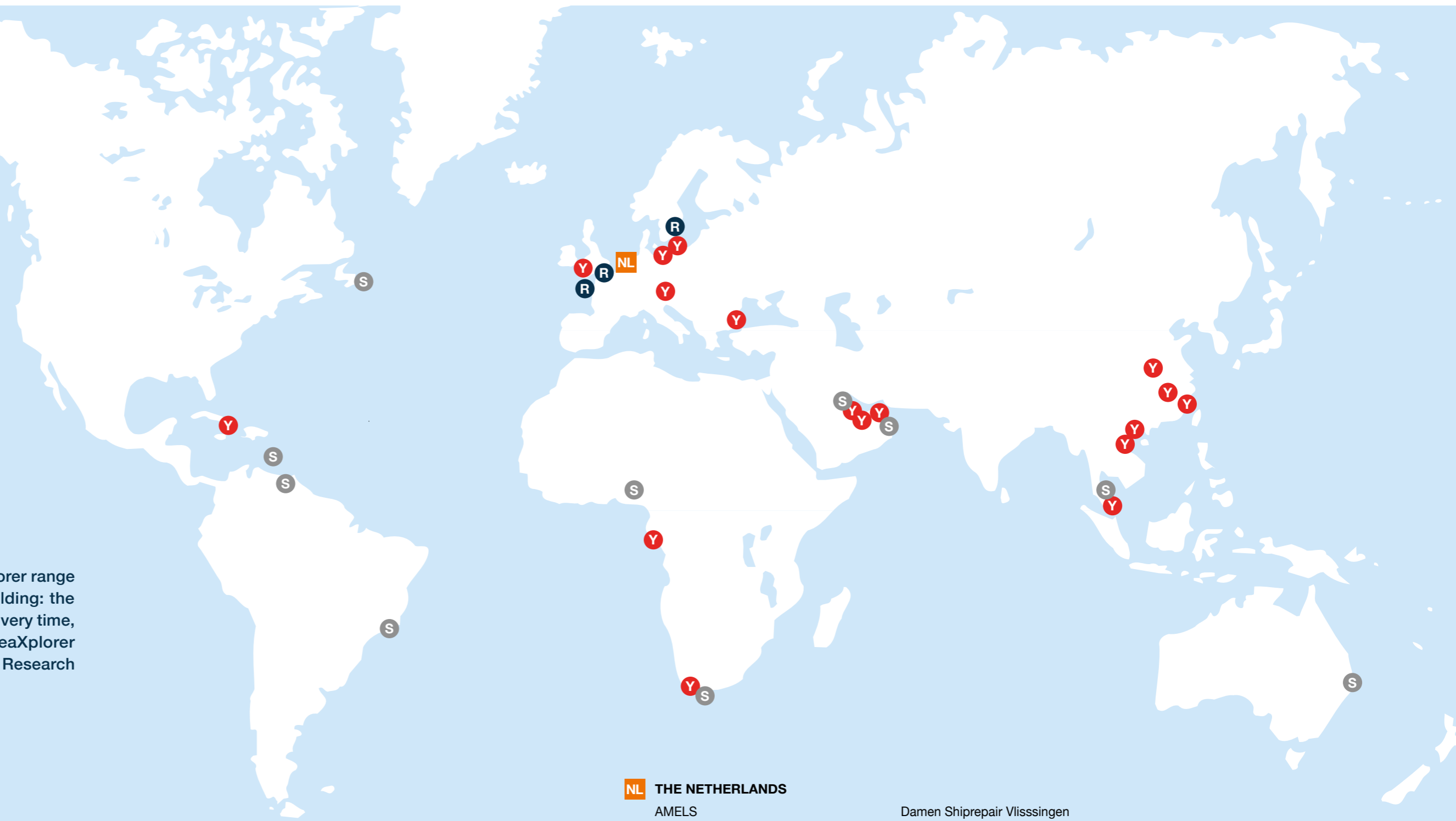
At DAMEN we are designing and building the SeaXplorer range following our highly successful approach to shipbuilding: the best and consistent quality, proven designs, short delivery time, low maintenance and excellent resale value. The SeaXplorer team of specialists builds on our global shipbuilding Research and Development expertise.

**Stable and successful multinational**

- More than 5,000 vessels delivered since 1969
- € 2 billion annual turnover
- 32 shipyards
- 9,000 employees

**Built by DAMEN**

- Proven quality at global yards
- Technology you can rely on in the toughest environments
- Innovations for saving lives at sea: SAR and coast guards
- Production efficiency thanks to modular standardisation
- Proven SOLAS shipbuilding, including Yacht Support and large Navy ships

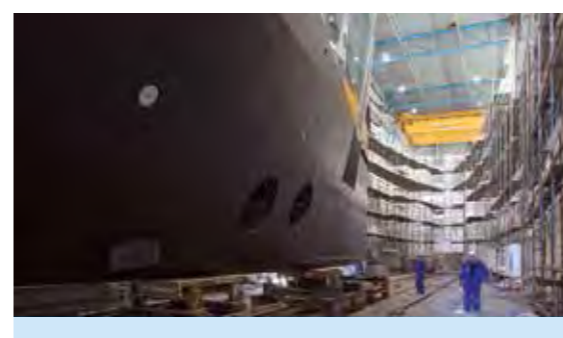


**NL THE NETHERLANDS**

- AMELS
- Damen Dredging Equipment
- Damen Shipyards Bergum
- Damen Shipyards Gorinchem (HQ)
- Damen Shipyards Hardinxveld
- Damen Schelde Naval Shipbuilding
- Damen Shiprepair Rotterdam

- Damen Shiprepair Vlissingen
- Damen Shiprepair Den Helder
- Damen Maastkant Shipyards Stellendam
- Damen Shiprepair Oranjerwerf
- Damen Shiprepair Amsterdam
- Damen Shiprepair Harlingen
- Damen Shiprepair Van Brink Rotterdam

- Y DAMEN YARD**
- R SHIPREPAIR YARD**
- S SERVICE HUB**



**SEAXPLORER**



#### DISCLAIMER

All information, specifications, descriptions, and images in this brochure are considered preliminary, non-binding and subject to change by SEAXPLORER, EYOS and DAMEN.

No images may be reproduced in any form without written permission of SEAXPLORER, EYOS and DAMEN.