



SIRENA 58



SIRENA YACHTS

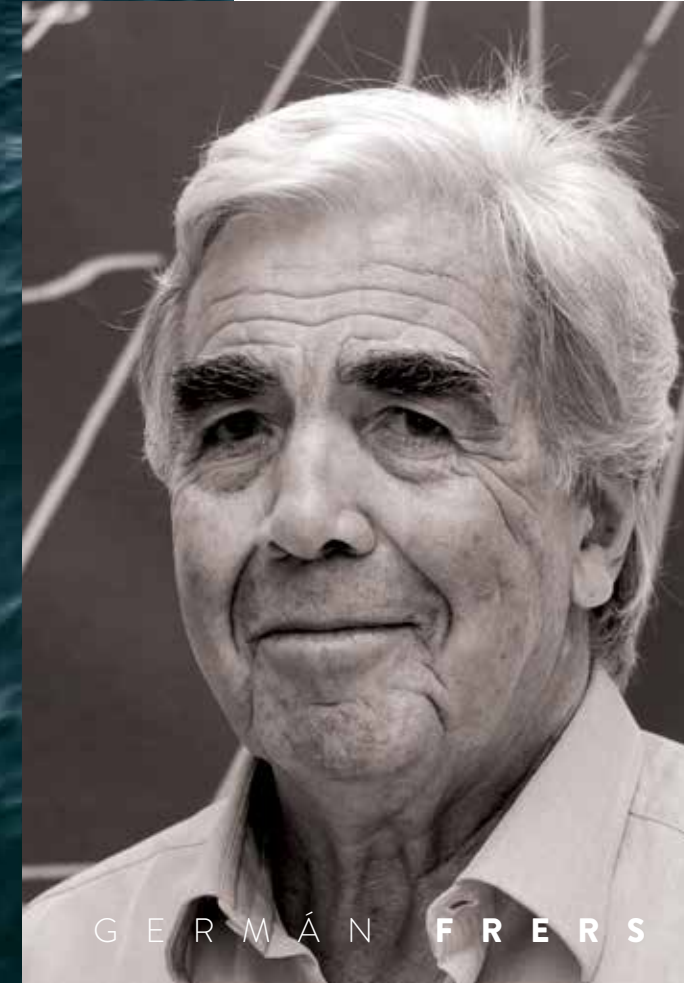


COMFORT AT SEA
ROOM TO RELAX

58



Exterior
Design



Seaworthiness and comfort are key components of every Sirena Yachts, and the Sirena 58 offers both. It starts with a hull design by world-renowned Germán Frers and Frers Naval Architecture & Engineering. Extensive tank testing ensures efficiency at speeds ranging from 10 to 30 knots. Vacuum-infused construction provides hull stiffness for excellent seakeeping and onboard comfort.

“It is a pleasant, sea-kindly low-drag canoe body capable of planning at high speed or cruising in semi-displacement, low-fuel-consumption mode. The hull stability is well matched to the needs of the gyroscopic stabilizers to ensure cruising or anchoring in great comfort.”

—Germán Frers





Because the substantial hull volume carries far forward, the Sirena 58 has expansive foredeck lounging space and broad side decks to simplify fore and aft movement.



58

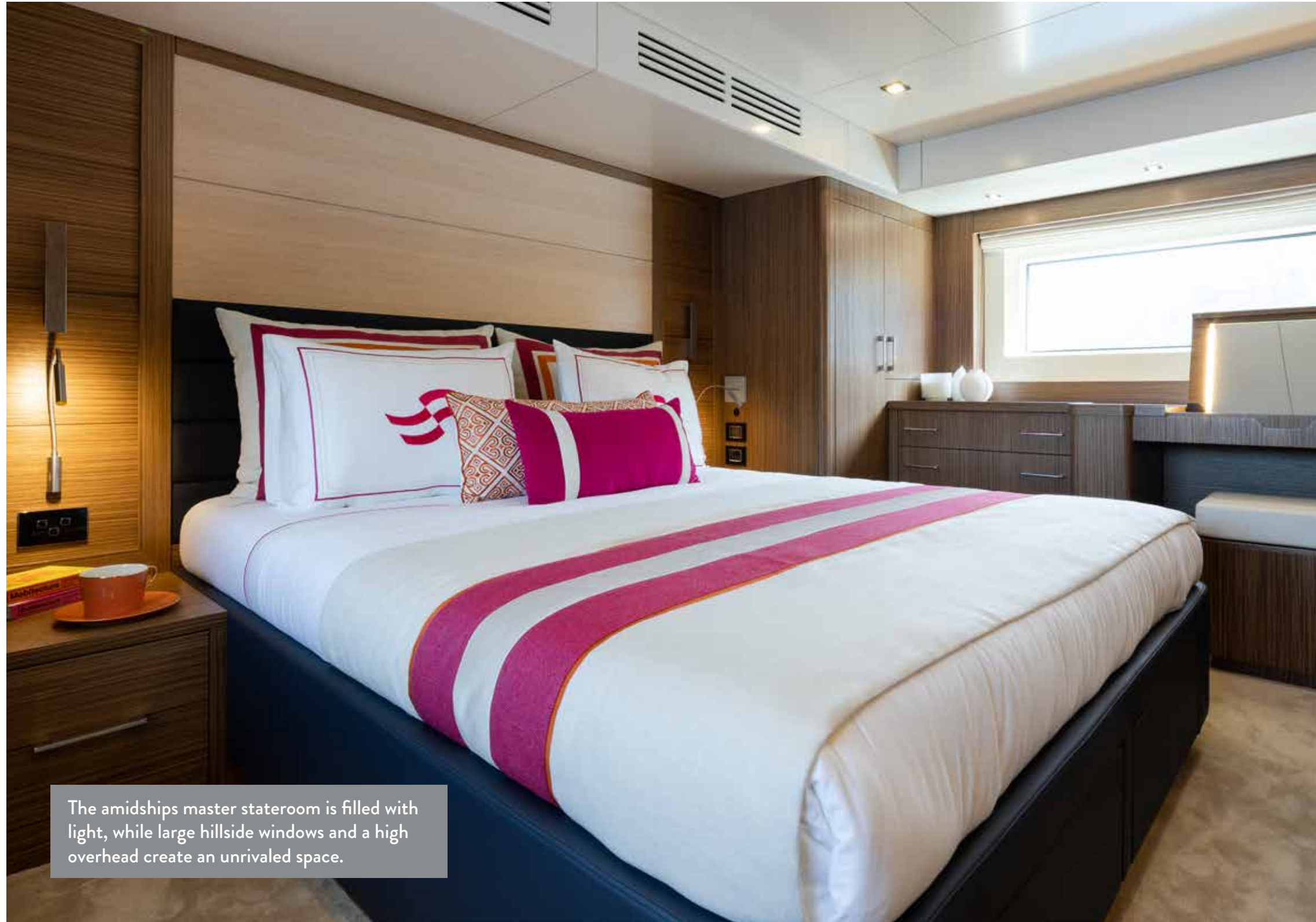


Interior
Design



The timeless interior of the Sirena 58 is designed by Tommaso Spadolini of Design Studio Spadolini and offers spaces equally suited to the intimate gathering of family and entertaining larger groups of friends.

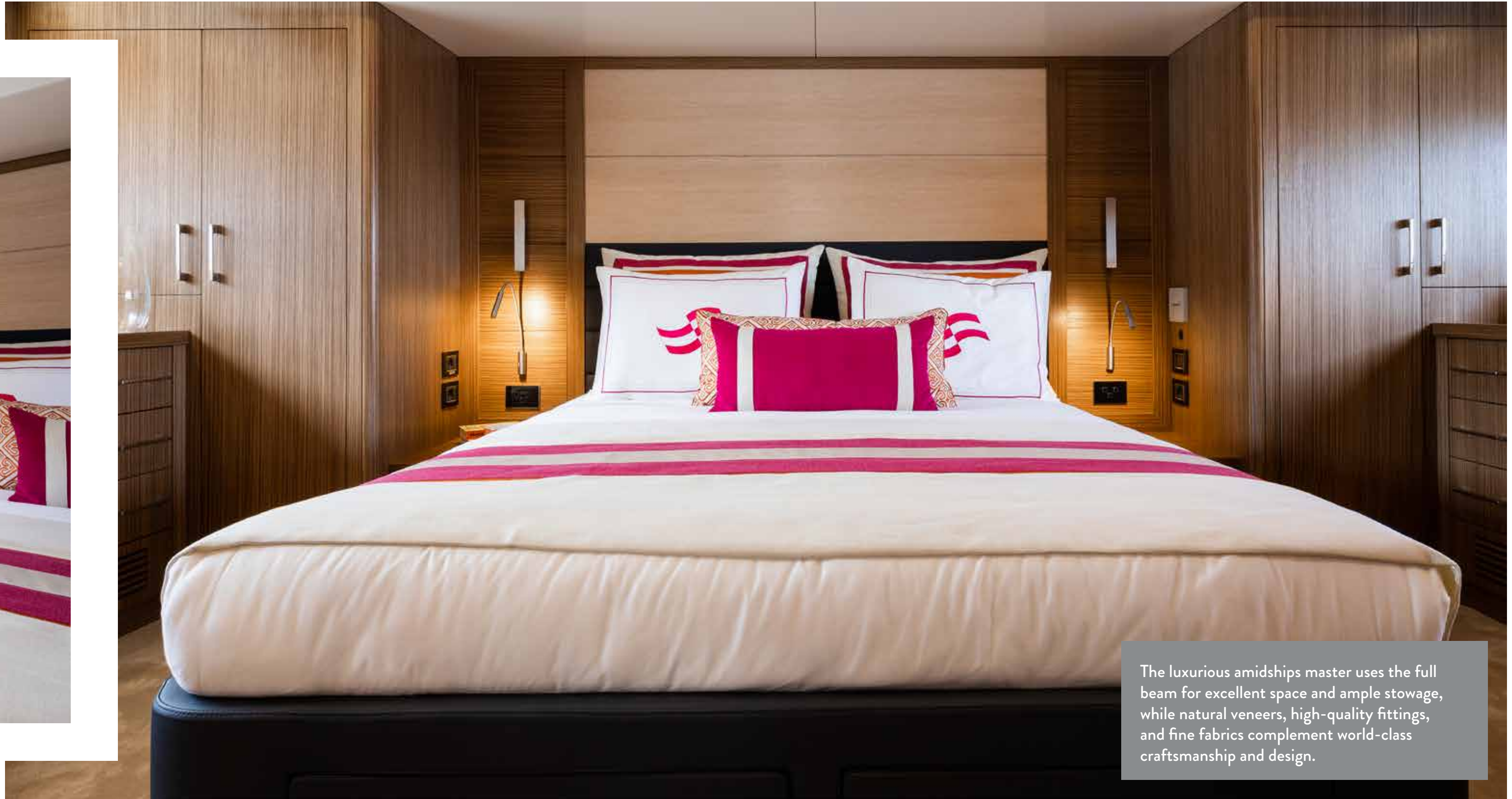
“The main concept of Sirena Yachts interiors is comfort and light. When we started discussing the concept, the mission was to create a warm and elegant space, which could mix high-tech and handcrafting.” —Tommaso Spadolini



The amidships master stateroom is filled with light, while large hillside windows and a high overhead create an unrivaled space.



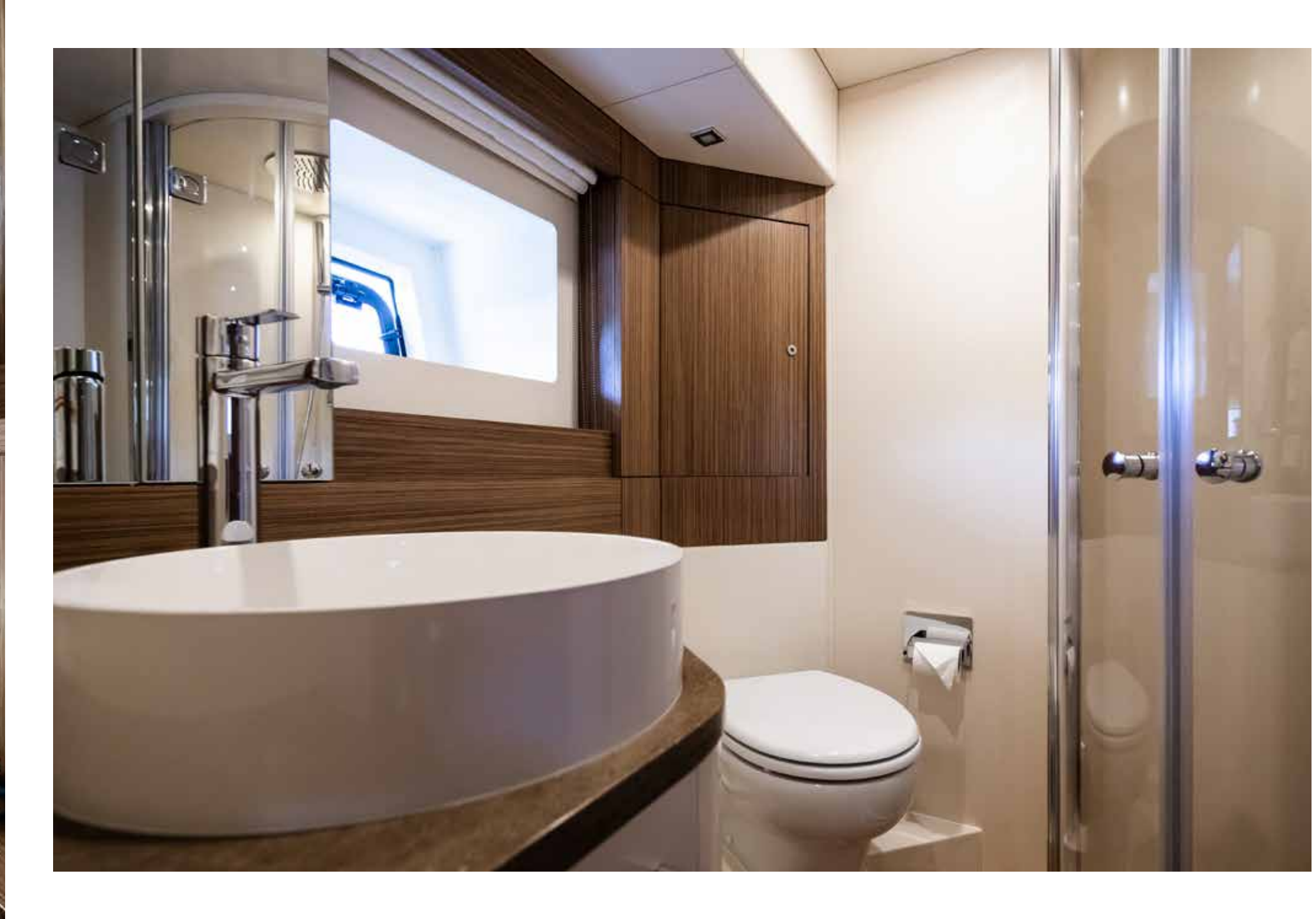
The privacy of an en suite extends to all staterooms in all layouts, thanks to the voluminous hull.

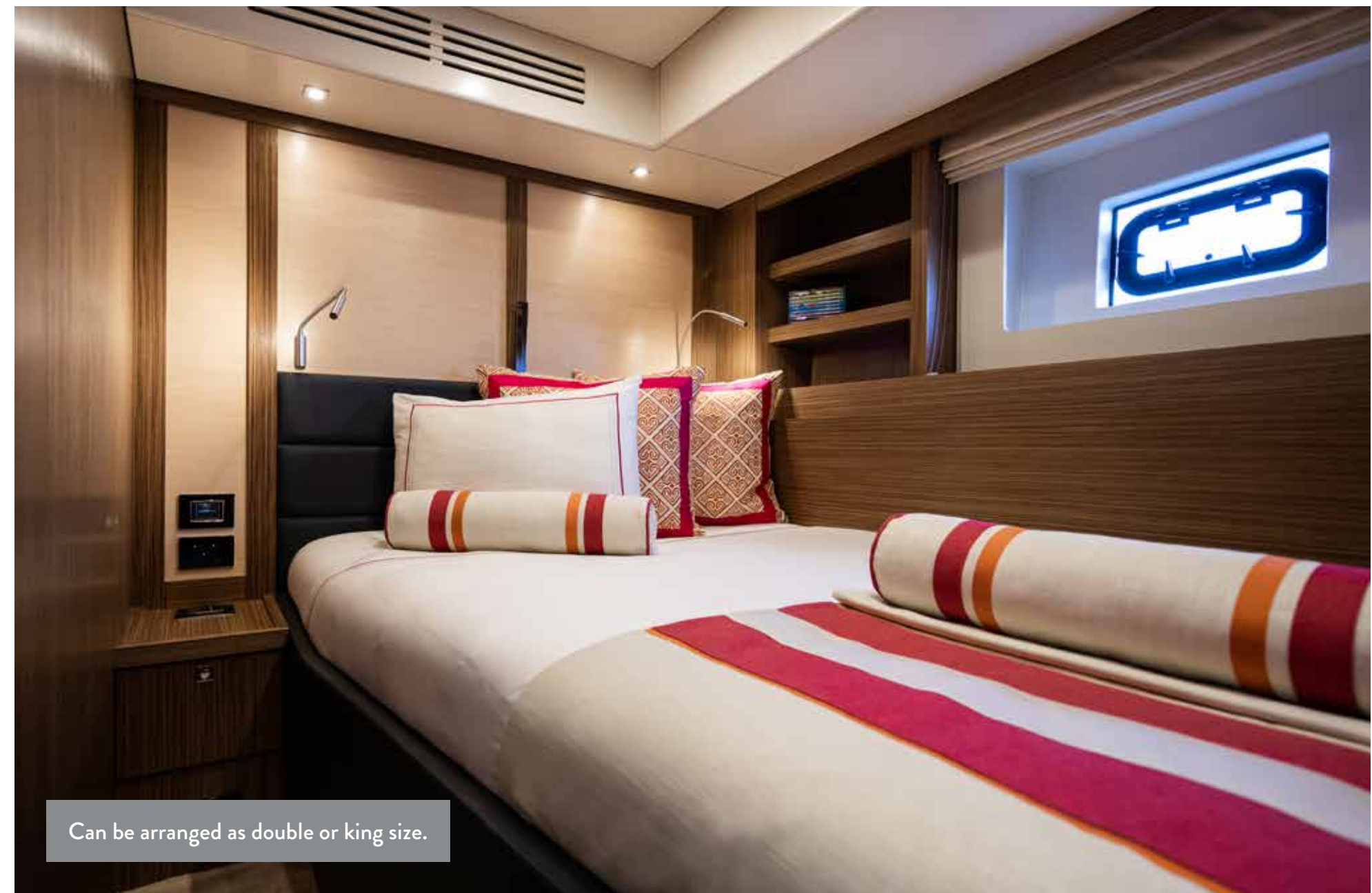


The luxurious amidships master uses the full beam for excellent space and ample stowage, while natural veneers, high-quality fittings, and fine fabrics complement world-class craftsmanship and design.

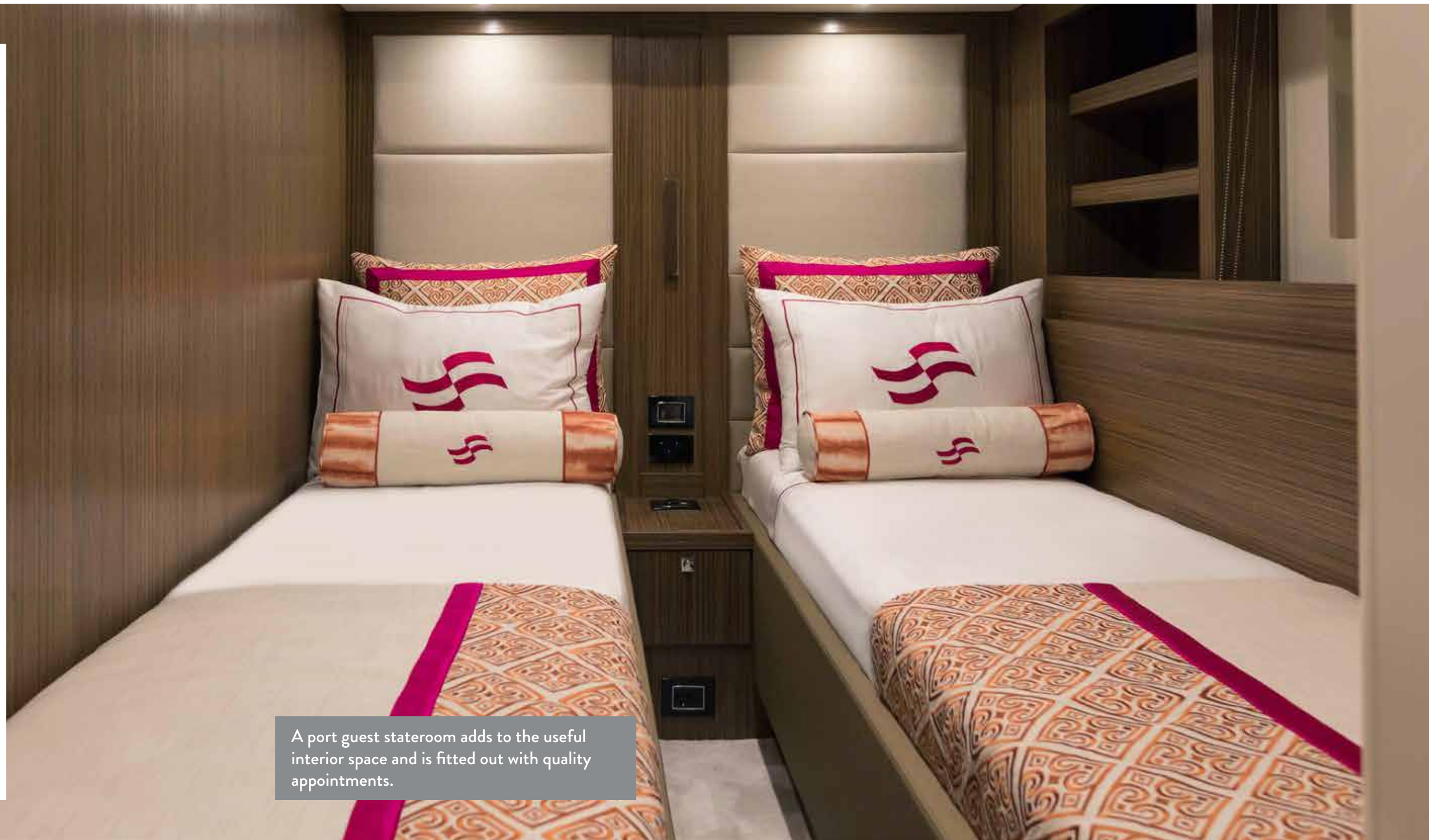


In the bow, the forward VIP stateroom pays close attention to ergonomic design and guest privacy.





Can be arranged as double or king size.



A port guest stateroom adds to the useful interior space and is fitted out with quality appointments.





Versatile starboard and port settees gather large groups or welcome a couple or family for mealtime or lounging.





A spacious flying bridge with sun pads, settee with dining table, and wide-open space will help create a lifetime of memories.

58



Live Without
Compromise



Step aboard the Sirena 58

to experience a life without compromise.

The Sirena 58 is a yacht that delivers a refined experience for owners that understand what they want. The design has a timeless look, with clean, shippy lines, and offers efficient performance at a range of speeds that add cruising versatility—go for an afternoon, a weekend, or a week. The seakindly ride and comfort features will make even the most sophisticated guests want to spend more time aboard, enjoying the fine craftsmanship and amenities as they cruise from port to anchorage.



**Commitment of
the independent
yachtsmen
to the sea**





The flying bridge is large enough to inspire cruisers to find breathtaking views and far horizons.





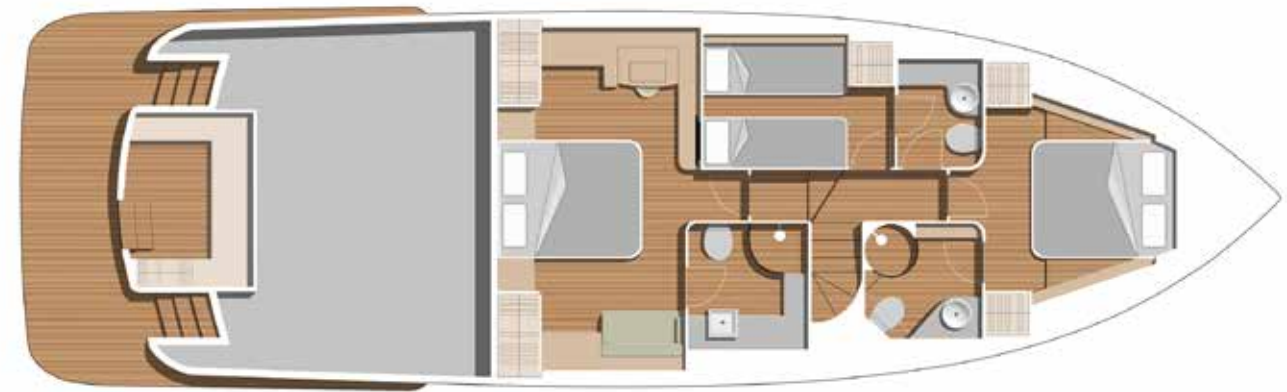








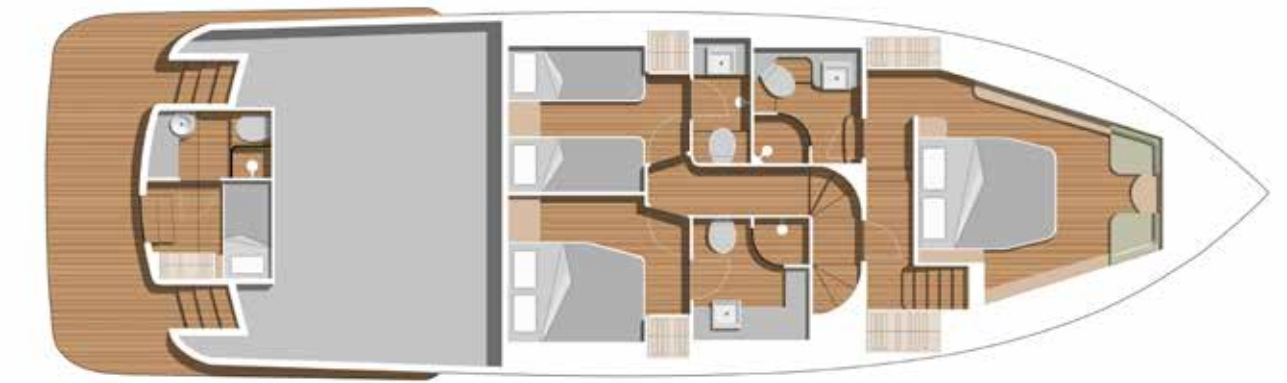




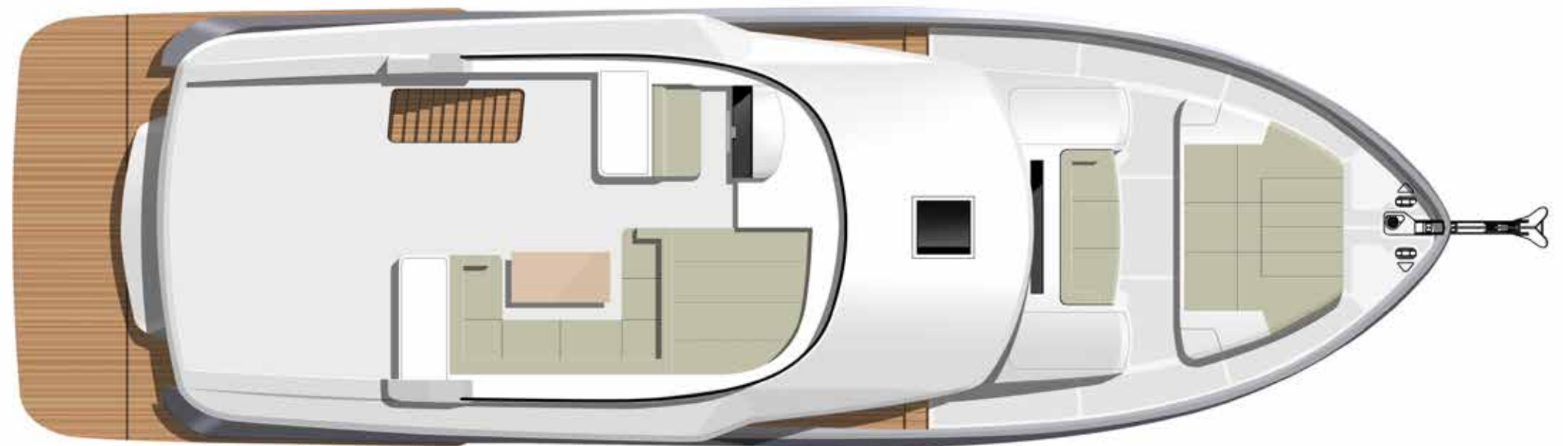
Standard Cabin Layout



Optional 2 Cabin Layout



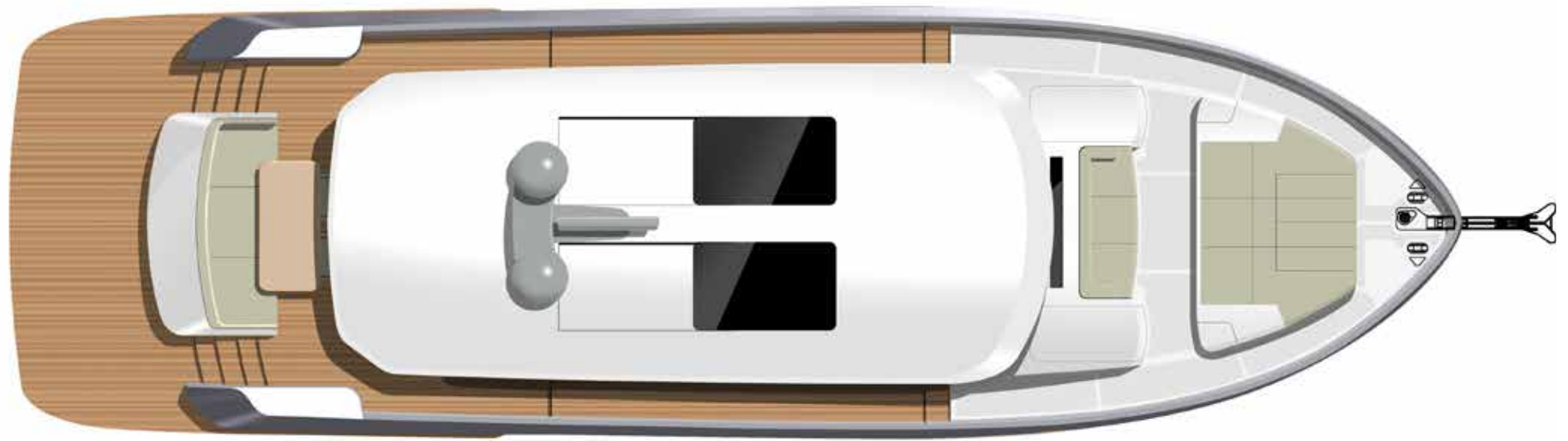
Optional 3 Cabin Layout



Fly Bridge



Main Deck





SIRENA 58 Dimensions and Main Characteristics

Length Overall L _{OA} (Include swim platform exclude anchor roller)	18,58m / 61'
Hull lenght L _H ISO 8666 (Net GRP - Swim platform excluded)	17,18m / 56'4"
Waterline Length L _{WL} ISO 8666 (Full Load Conditions)	17,00m / 55'9"
Hull Beam B _{Hmax} ISO 8666 (@Mid-Ship Section)	5,36m / 17'7"
Max Draft - T _{MAX} ISO 8666	1,24m / 4'1"
Loaded displacement mass - mLDC ISO 8666	34,5 tonnes / 36 tonnes
Light Craft Condition Mass - m _{LCC ISO 8666} (= Dry Displacement, No Crew, No Luggage)	28 tonnes / 29,5 tonnes
Diesel tank capacity	3600 l / 950 gal
Fresh water tank	800 l / 210 gal
Black water tank capacity	450 l / 120 gal
Gray water tank capacity	225 l / 60 gal
Cabins	3 standard + 1 (optional crew cabin)
Beds	6 + (1 crew)
Heads	3 + 1 (crew head)
Building material	GRP / Carbon hybrid fiber
Hull type	Semi Displacement
Exterior styling & concept	Frers Naval Architecture & Engineering
Interior Design	Design Studio Spadolini
Hull Design	Frers Naval Architecture & Engineering
Engines	VOLVO D11 670 HP x 2 (std.) / VOLVO D13 900 HP x 2 (opt.) CAT C 8.7 – 650 HP x 2 (opt.) / CAT C 12.9 – 850 HP x 2 (opt.)
Marine gears	ZF 325 IV / ZF 335 IV
Reduction ratio	2.037: 1 (ZF 325 IV) / 1.964: 1 (ZF 335 IV)
Transmission	V Drive
Propeller diameter (max)	800mm / 2'6"
Max speed	27 / 30 knots
Cruising speed	16 knots
Economy cruising speed	10 knots
Range 10 kn (inc. 10% reservoir)	850 NM
Certification	CE Category A



SIRENA 58 COUPE Dimensions and Main Characteristics

Length Overall L _{OA} (Include swim platform exclude anchor roller)	18,58m / 61'
Hull lenght L _H ISO 8666 (Net GRP - Swim platform excluded)	17,18m / 56'4"
Waterline Length L _{WL} ISO 8666 (Full Load Conditions)	17,00m / 55'9"
Hull Beam B _{Hmax} ISO 8666 (@Mid-Ship Section)	5,36m / 17'7"
Max Draft - T _{MAX} ISO 8666	1,2m
Loaded displacement mass - mLDC ISO 8666	31,7 tonnes / 32,5 tonnes
Light Craft Condition Mass - m _{LCC ISO 8666} (= Dry Displacement, No Crew, No Luggage)	25,2 tonnes / 26 tonnes
Diesel tank capacity	3600 l / 950 gal
Fresh water tank	800 l / 210 gal
Black water tank capacity	450 l / 120 gal
Gray water tank capacity	225 l / 60 gal
Cabins	3 standard + 1 (optional crew cabin)
Beds	6 + (1 crew)
Heads	3 + 1 (crew head)
Building material	GRP / Carbon hybrid fiber
Hull type	Semi Displacement
Exterior styling & concept	Frers Naval Architecture & Engineering
Interior Design	Design Studio Spadolini
Hull Design	Frers Naval Architecture & Engineering
Engines	VOLVO D11 670 HP x 2 (std.) / VOLVO D13 900 HP x 2 (opt.) CAT C 8.7 – 650 HP x 2 (opt.) / CAT C 12.9 – 850 HP x 2 (opt.)
Marine gears	ZF 325 IV / ZF 335 IV
Reduction ratio	2.037: 1 (ZF 325 IV) / 1.964: 1 (ZF 335 IV)
Transmission	V Drive
Propeller diameter (max)	800mm / 2'6"
Max speed	28 / 31 knots
Cruising speed	16 knots
Economy cruising speed	10 knots
Range 10 kn (inc. 10% reservoir)	850 NM
Certification	CE Category A

NOTE: All performance specified in the table above are design data and applies to a standard configuration boat (standard equipment installed as per this standard list) with clean keel, propellers, and rudders. Furthermore, the performance levels indicated above have been defined under good sea and wind conditions (Beaufort Scale level 1, Douglas Scale level 1, ambient T < 25°, seawater T =15°, atmospheric P = 103250 Pa) with 2 people on board, 25% fuel, and fresh, grey and black water tanks empty. Different or harsher sea conditions and additional selected optional equipment may affect the performance.

This brochure does not, under any circumstances whatsoever, constitute any offer by the shipyard to any person nor may it be incorporated into any contract. Any and all information contained in this brochure, including, without limitation, all technical data, performance gures, illustrations and drawings, are just a rough guide only. The contents are in no way contractual and refer to standard models of yachts built by the shipyard and have been updated by the shipyard as of the date of issue of the brochure. Therefore, the only indications binding on the seller are contained solely in the sale agreement and in the relevant specific manual. This brochure is based on information available at the date of issue. Notwithstanding all efforts to ensure accuracy, the information contained in the brochure may not cover all details, technical-commercial changes subsequent to the date of issue, nor accurately foresee or report all possible scenarios. Displays, photos, schemes, designs or examples contained in this brochure are solely and exclusively reproduced to highlight the information contained. Due to the different characteristics of each yacht, the shipyard declines any and all liability for any use thereof on the basis of the information contained in this brochure.



SIRENA YACHTS

TR

Turkey, Headquarters

+90 212 219 74 74

Abdi İpekçi Cad. Ada Apt. No: 22/18

K: 5 34367 Nişantaşı / İstanbul

sales@sirenayachts.com

www.sirenayachts.com

A brand of  SIRENA MARINE