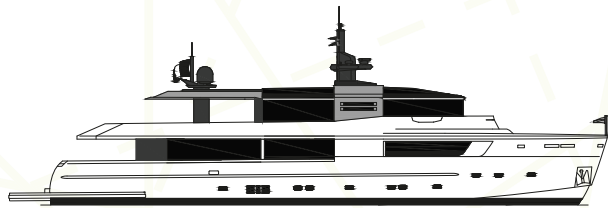


# A א א א



ARCADIA  
YACHTS







Courtesy of  
Ceramica V. Pinto  
Vietri sul Mare



**A RENAISSANCE  
OF SAILING**

From a gulf that is an ancient  
cradle of sailing traditions and culture,  
from a land with a long tradition  
of hospitality.



**A RENAISSANCE  
OF YACHTING**

Boats without boundaries,  
where the interiors blend into the panorama  
and let in the light,  
sounds and scents of the sea.



## A RENAISSANCE OF TECHNOLOGY

More respect for nature, more comfort  
living together, more sensitivity  
to rediscover the sea.



## A RENAISSANCE OF THE HUMAN BEING

In the midst of a new voyage,  
on a course taking us  
farther than ever before,  
surrounded by wonders.



## OUR HERITAGE

ARCADIA YACHTS

identifies with the values of a culture  
thousands of years old, a culture that has made its mark  
on history, art and architecture, characterised  
by a love of beauty and good taste and by the joy of sharing.

From ancient Pompeii to the Maritime Republic of Amalfi,  
from Neapolitan Renaissance to the city's traditional cuisine:

ARCADIA YACHTS was founded in a place  
where the people love beauty.



## A115

A flexible layout  
with 4 to 6 double cabins,  
a large main deck and bright sky lounge:  
a limitless experience,  
where spaces are connected  
and become one.









MAIN DECK





Main Salon



Main Salon



Main Salon - Dining Area



Guest Stairs

Main Deck Lobby



MASTER  
QUARTER



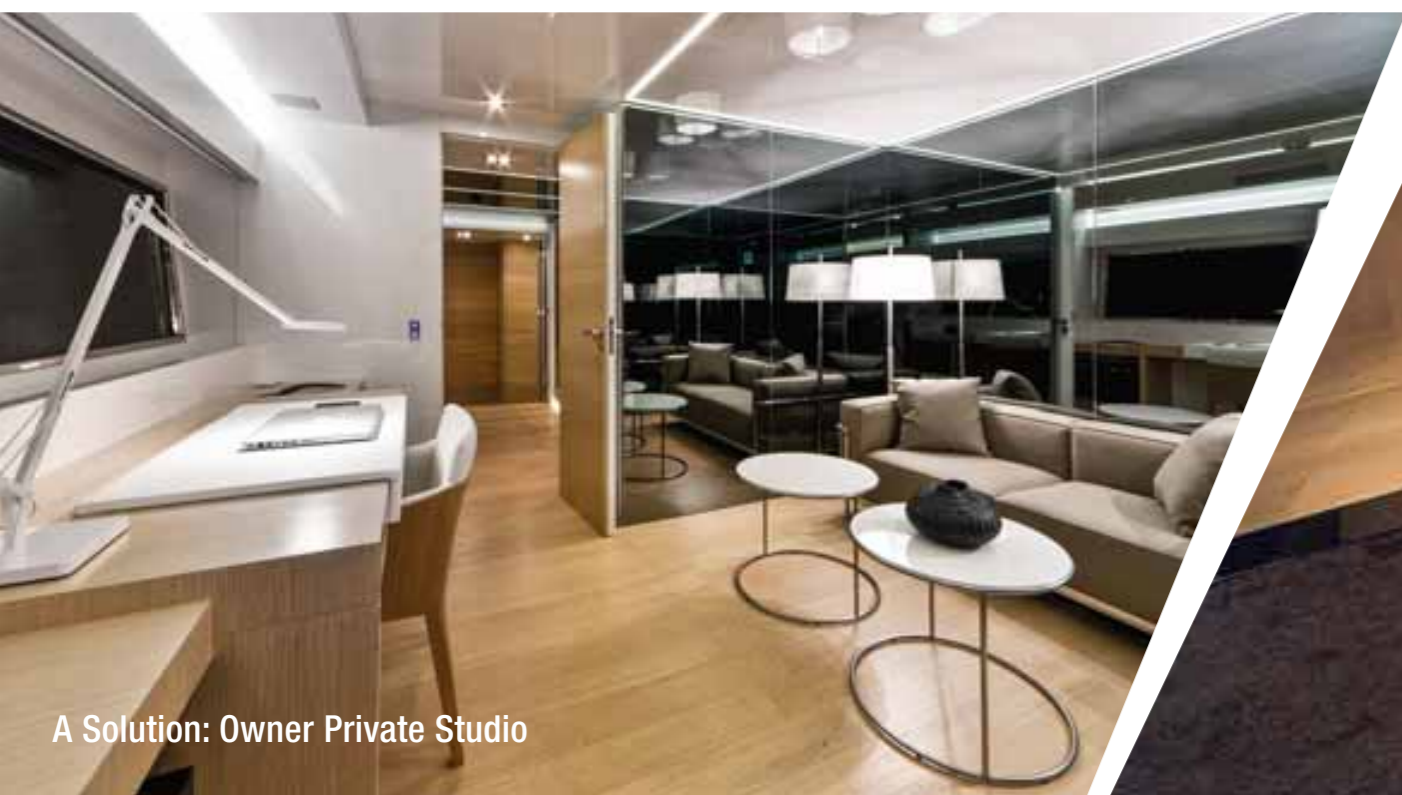




Owner Bathroom



A Solution: Owner Private Gym



A Solution: Owner Private Studio



Master Quarter

LOWER DECK



Lower Deck Lobby

Lower Deck Lobby



Vip Cabin



Vip Bathroom



Twin Cabin

Twin Bathroom



Private Terrace



Aft-Deck

UPPER DECK





Aft-Deck



Aft-Deck



Family Room



6<sup>th</sup> Cabin

Solar Panels



Helm Station



Charting Table



Wheel House





Laundry Area



Crew Quarter





Captain Cabin

4 Cabins  
8 Crew Members

UNIQUE  
FEATURES



UPPER DECK

A unique area  
of more than 140 sqm:  
interior and exterior spaces  
for getting together.



DINING AREA  
AND MAIN DECK

Wide body  
with opening terraces  
in the dining area.





## MASTER QUARTER

One of the best in the segment: an area of around 40 sqm for you to customise, with the Yacht owner's privacy in mind.



## CREW MEMBERS

Top-level service: invite a crew of up to 9 members on board and take advantage of a service area that is more than twice as big as those of traditional players.



## SEMI-PLANING HULL

Around 10% more efficient  
on average than those  
of the market players.

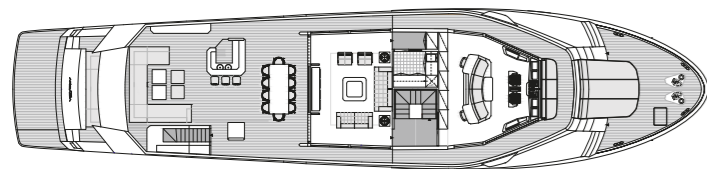
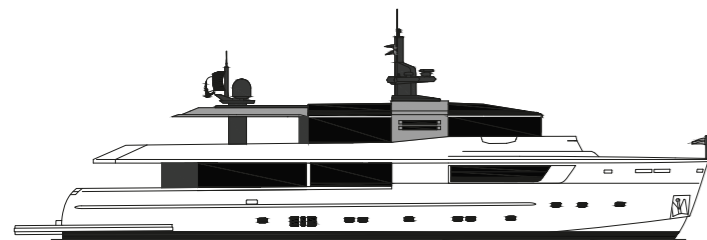


## SOLAR PANELS

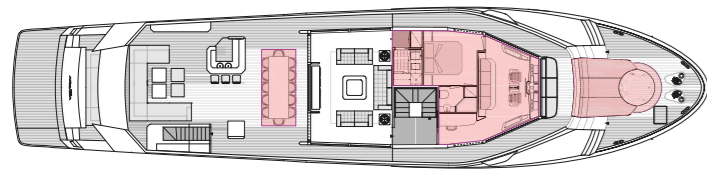
An exterior area  
of around 40 sqm  
covered by solar panels  
generating about  
4kW of energy.

# GENERAL ARRANGEMENTS AND MAIN DATA

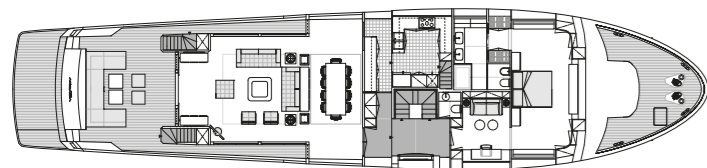
## A115



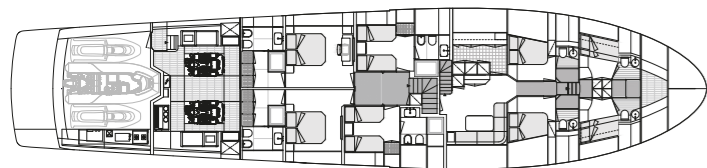
UPPER DECK  
Standard version



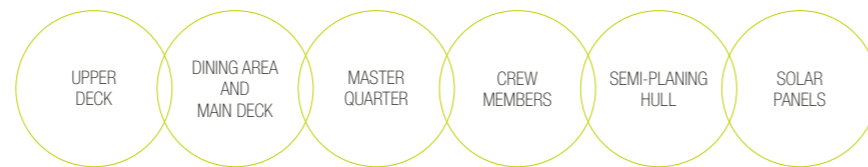
UPPER DECK  
Main optional available



MAIN DECK  
Standard version



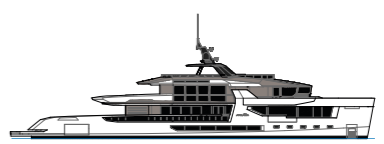
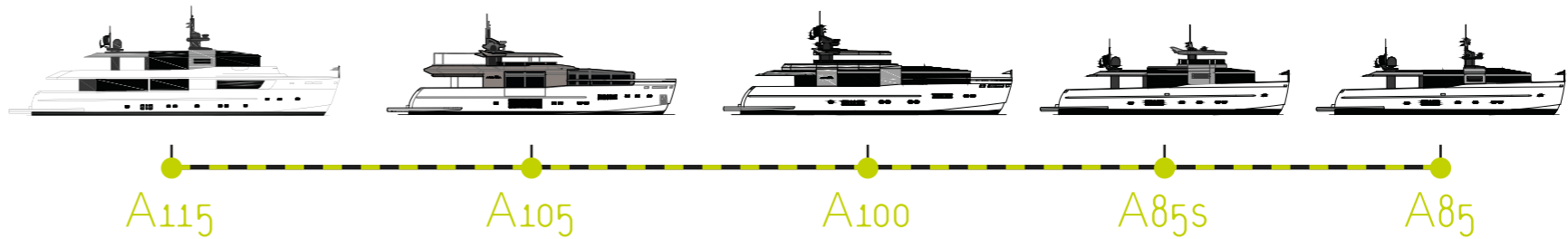
LOWER DECK  
Standard version



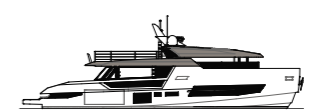
	HULL	SEMI-PLANING
HULL & MAIN DECK CONSTRUCTION MATERIAL	FIBERGLASS	
VERANDAS CONSTRUCTION MATERIAL	ALUMINIUM	
OVERALL LENGTH	34,99 m / 114'10"	
HULL LENGTH	32,75 m / 107'05"	
WATERLINE LENGHT	30,98 m / 101'08"	
MAXIMUM BEAM	8,13 m / 26'08"	
MAXIMUM DRAFT	2,60 m / 8'06"	
DISPLACEMENT UNDER FULL LOAD	180 tons / 396.830 lb	
GROSS TONNAGE	266 GT	
MAIN ENGINES	2x MAN V8 - 1.200 hp	
MAXIMUM SPEED	± 18 kn	
CRUISE SPEED	± 16 kn	
GENERATOR (MED / TROPICAL version)	2x 45 kW - 50 Hz / 55 kW - 60 Hz	
AIR CONDITIONING (MED / TROPICAL version)	180.000 Btu/h / 240.000 Btu/h	
SOLAR PANELS ENERGY	± 4 kW	
GUEST BEDS	10 beds in 5 cabins	
CREW BEDS	8 beds in 4 cabins	
TANKS CAPACITY		
FUEL	23.000 l - 6.080 gal	
WATER	4.100 l - 1.080 gal	
GREY WATER	1.200 l - 320 gal	
SEWAGE	1.000 l - 260 gal	

### OUR FLEET ARCHITECTURE

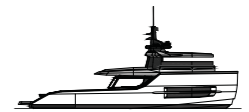
Our fleet has evolved in response to the highly various needs of experienced yacht owners and sailors to include vessels ranging from 18 to 47 metres, divided into three series, each with its own unique personality. A Renaissance on board, a new way to feel the sea.



FOR.TH. 47M



sherpa XL



sherpa

## FOR.TH. FORWARD THINKING

An ambitious vision bringing to large yachts all the pleasures of being close to nature and enjoying your time together in flexible spaces with a friendly ambience.

## sherpa THE POCKET-SIZED MEGA YACHT

Comfortable, agile, with options for customisation and expansive open spaces.

## A THE SYNTHESIS OF A PARADOX

The thin boundary between inside and outside, between sociability and privacy.

Tender and toys are not included in standard configuration and price. The information contained in this data sheet are not binding. For updated materials, please contact the shipyard or your official rep.



### OUR SHIPYARD

Every renaissance begins in a specific location. The ARCADIA YACHTS renaissance begins in its shipyard, the centre of Arcadia's design and shipbuilding work, where it all happens: from lamination of hulls and fibreglass to woodworking and finishing.

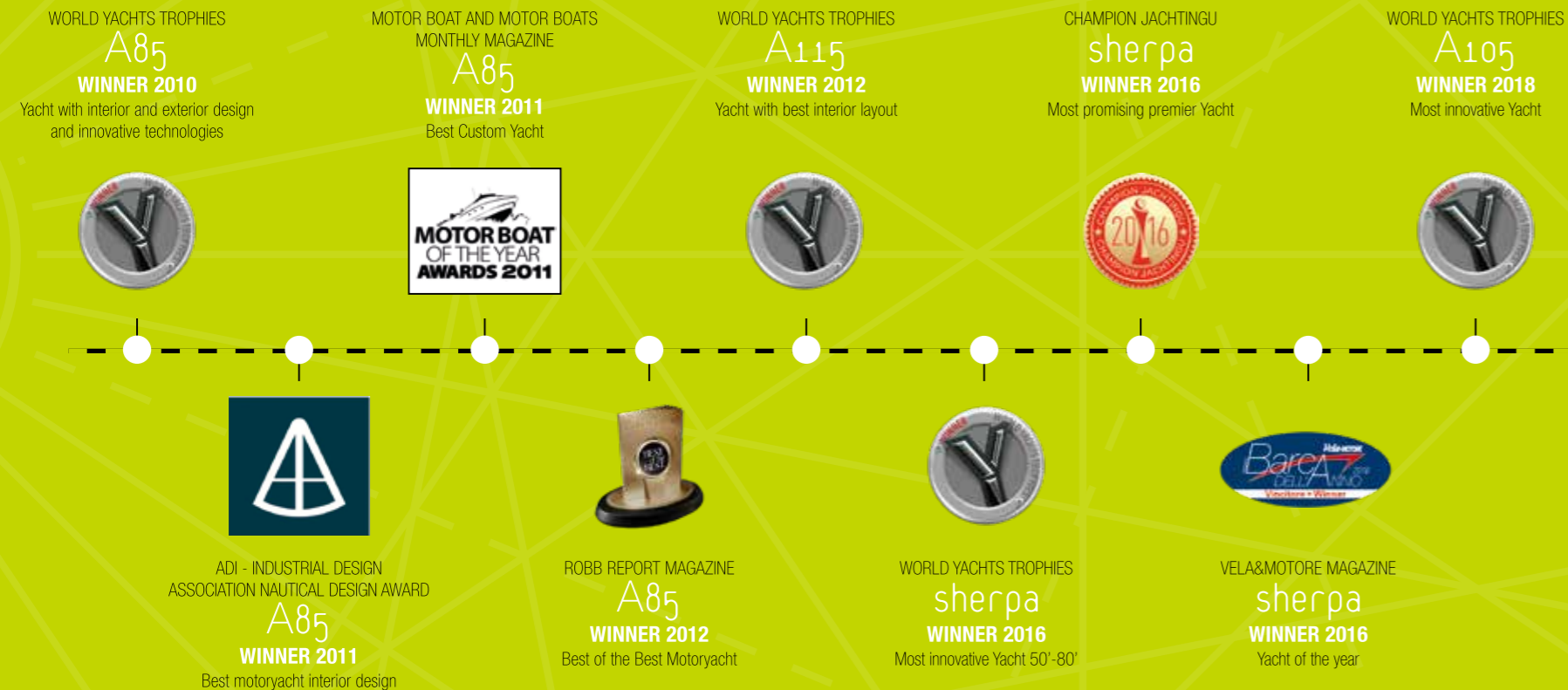
An advanced, energy-efficient facility extending over a 36,000 sqm area in the Gulf of Sorrento, a renowned centre of shipbuilding. Since ever.



What really counts at sea  
is knowing where you are  
and which direction  
you are heading in:  
ARCADIA YACHTS has set its course  
for the future, with the sailors  
of today and tomorrow.



# ARCADIA AWARDS



**This brochure in no way constitutes a contract of sale for the boatyard's vessels to any person or company.**

All information contained herein, including but not limited to technical and performance data, illustrations, and drawings, is non-binding and for purposes of illustration only.

The information in this brochure refers to the boatyard's standard motoryacht models available as of the date of publication.

Technical and descriptive information is valid only to the extent that it pertains to the specific vessel that is the subject of a purchase.

**Contract terms are valid only to the extent that they are contained in a contract of sale.**

This document is based on information available at the time of publication.

Despite efforts to ensure the greatest possible accuracy, the information contained herein may fail to cover all details, omit technical or commercial changes that may have been made subsequent to publication, describe features that are not present, and fail to envisage all circumstances that might occur.

**Any illustrations, photographs, diagrams and examples shown in this brochure are included solely for the purposes of illustrating the text.**

Due to the different features of each vessel, the boatyard assumes no liability for actual use based on the illustrated applications.

Printed May 2018





