

# FD SERIES



**HORIZON**  
WORLD CLASS YACHTS

FD75 // FD80 // FD85 // FD87 // FD92 // FD92 // FD102 // FD102 // FD125



**2020 EDITION**

## FREEDOM LIES IN BEING BOLD

"With the FD Series, we directly address the market's demand for style, space and performance. Traditional yacht design wouldn't accommodate the layouts and features we wanted, so advanced engineering and careful planning has been a necessity for many of the FD models. This is exactly what sets Horizon apart from other builders - our drive for innovation and our willingness to push the proverbial envelope." — CEO John Lu





# *Defining the FD Series*

## *VOLUME*

The FD Series yacht offers interior space and volume that is unrivaled, allowing for layouts and amenities once limited to much larger builds.

## *STYLE*

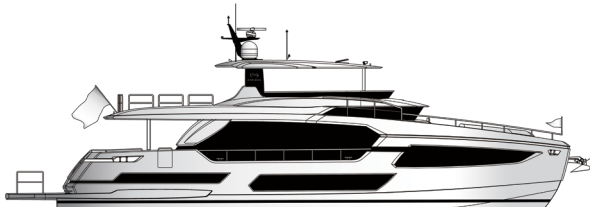
From the design studio of Cor D. Rover, the FD Series yacht is defined by large windows, generous deck spaces and a striking, head-turning profile.

## *COMFORT*

The FD Series yacht boasts an innovative High Performance Piercing Bow and hull design that affords superb comfort in all sea conditions.

# Current Models

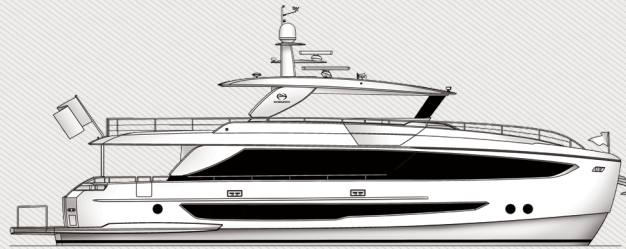
## FD75



Tailored to the Owner/Operator

## FD80

On-Deck Master and Beach Club

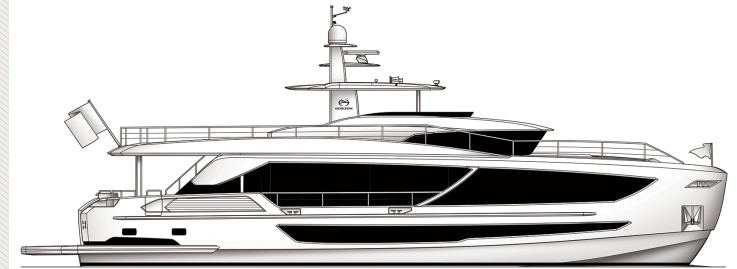


OPEN BRIDGE



SKYLINE

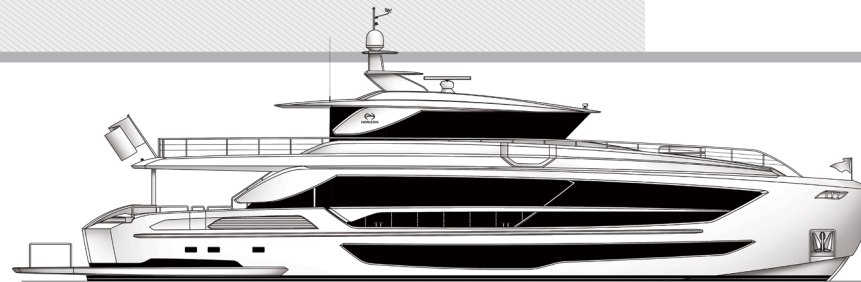
## FD85



Style, Space, Amenities

### CUSTOMIZATION COMES STANDARD.

Each model featured is the result of a design evolution accommodating an owner's vision. The FD Series yacht can be customized and engineered to your preference.



## FD102

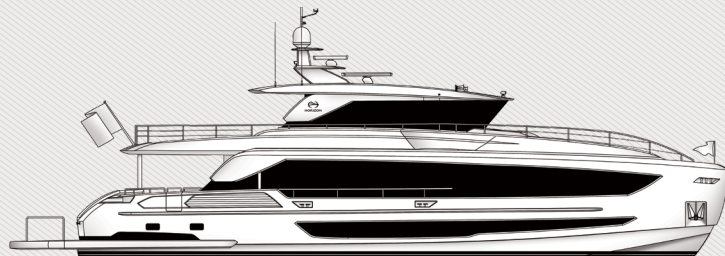
Superyacht Style with Sport Performance

## FD87

Five Staterooms, Infinite Options



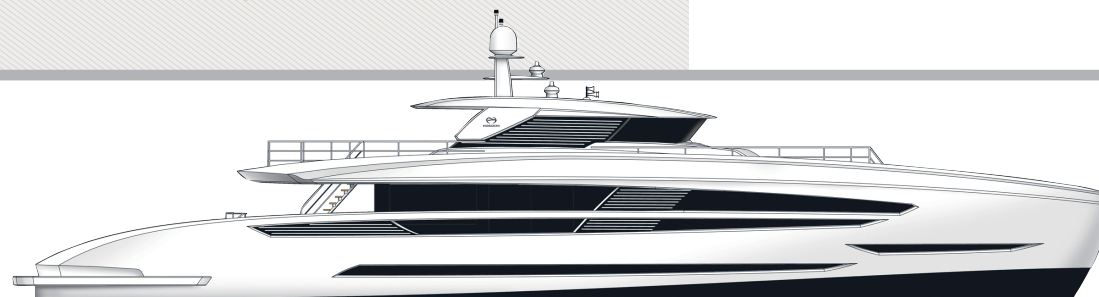
OPEN BRIDGE



SKYLINE

## FD92

Tri-Deck Superstructure



## FD125

Luxury, Space, Sophistication



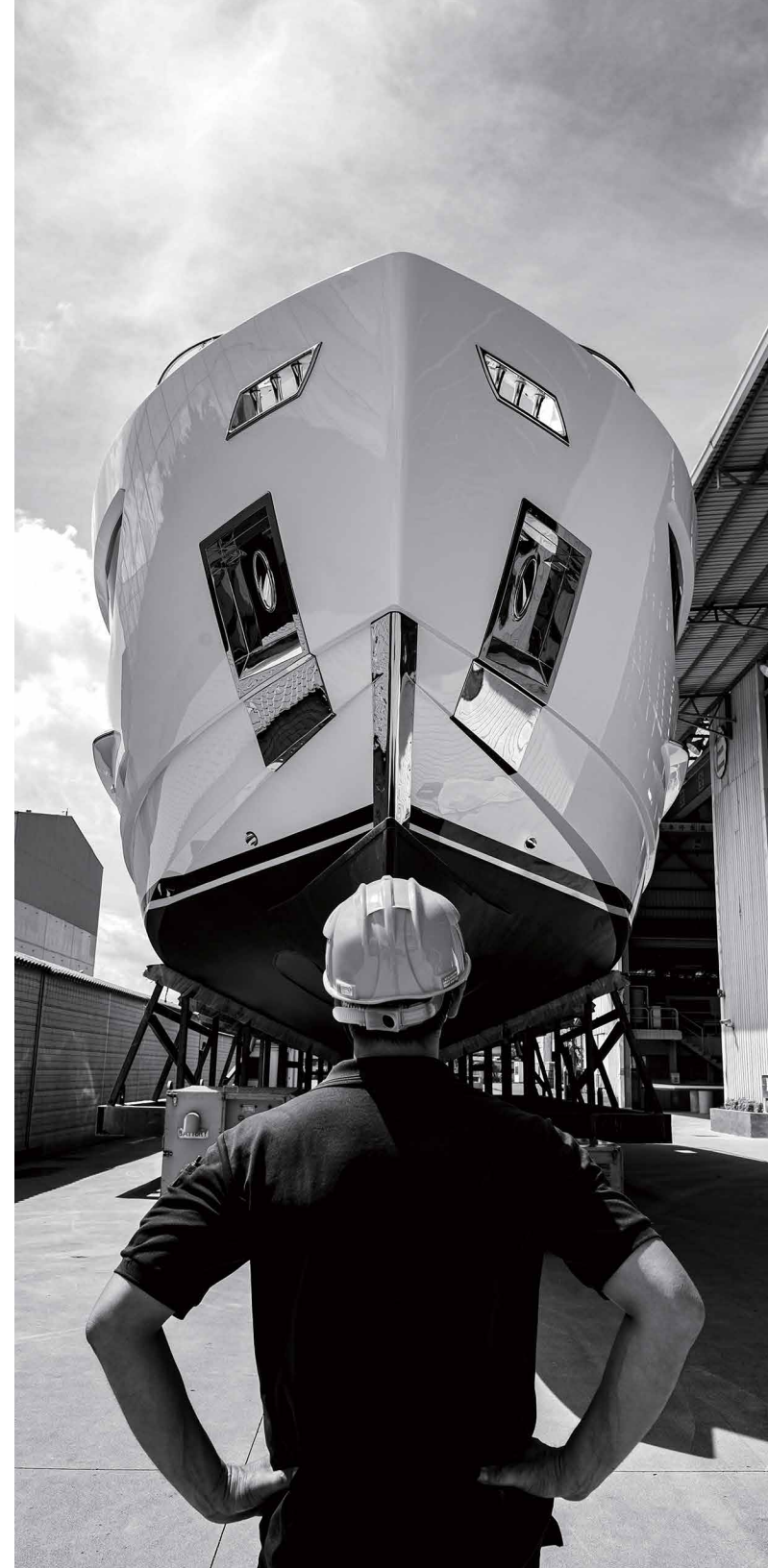
*Design & Performance*



# *Design Team*

## **A COLLABORATION IN INNOVATION.**

At Horizon, over 33 years of yacht building experience has allowed our in-house team of naval architects, engineers and craftsmen to consistently improve upon each build and develop new models. Our one million-square-foot complex encompasses four state-of-the-art facilities within the vibrant yachtbuilding center of Kaohsiung, Taiwan.



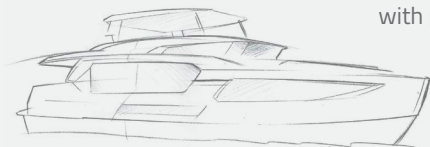




IN COLLABORATION WITH

*Cor D. Rover*  
DESIGN

Horizon partnered with leading Dutch designer Cor D. Rover (right) to conceptualize the FD Series, the first of its kind, in a revolutionary design that efficiently combines style and space with performance and comfort.





Horizon Headquarters



**THESE PAGES**

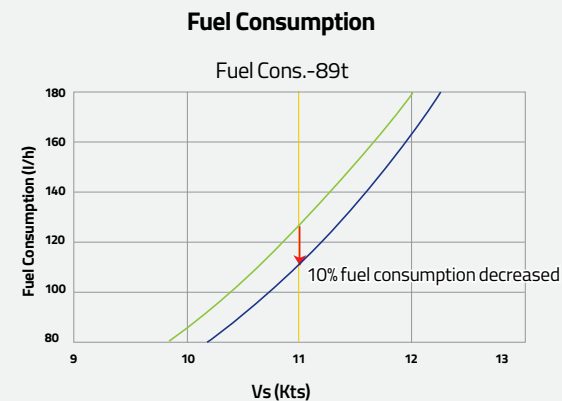
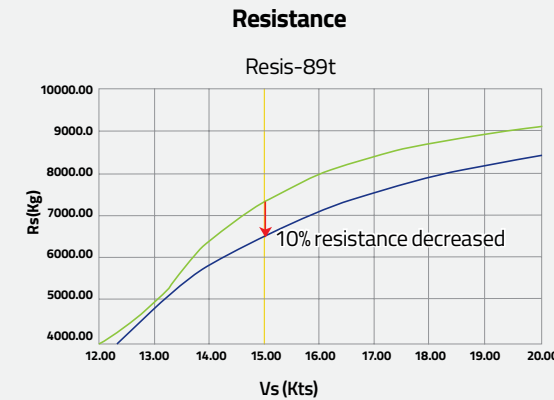
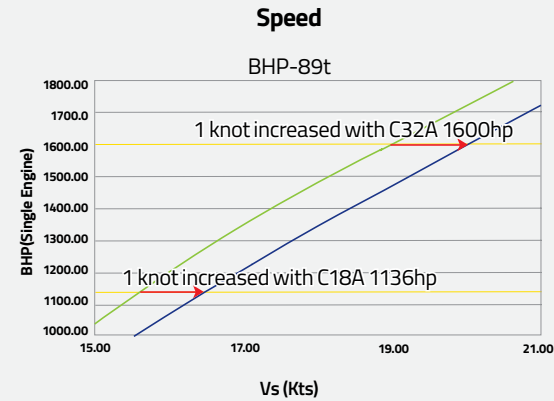
At the Horizon Design Center, clients can select all onboard items, from stonework and woodwork, to fabrics and finishes, fixtures, hardware, china and glassware.



# The High Performance Piercing Bow (HPPB)

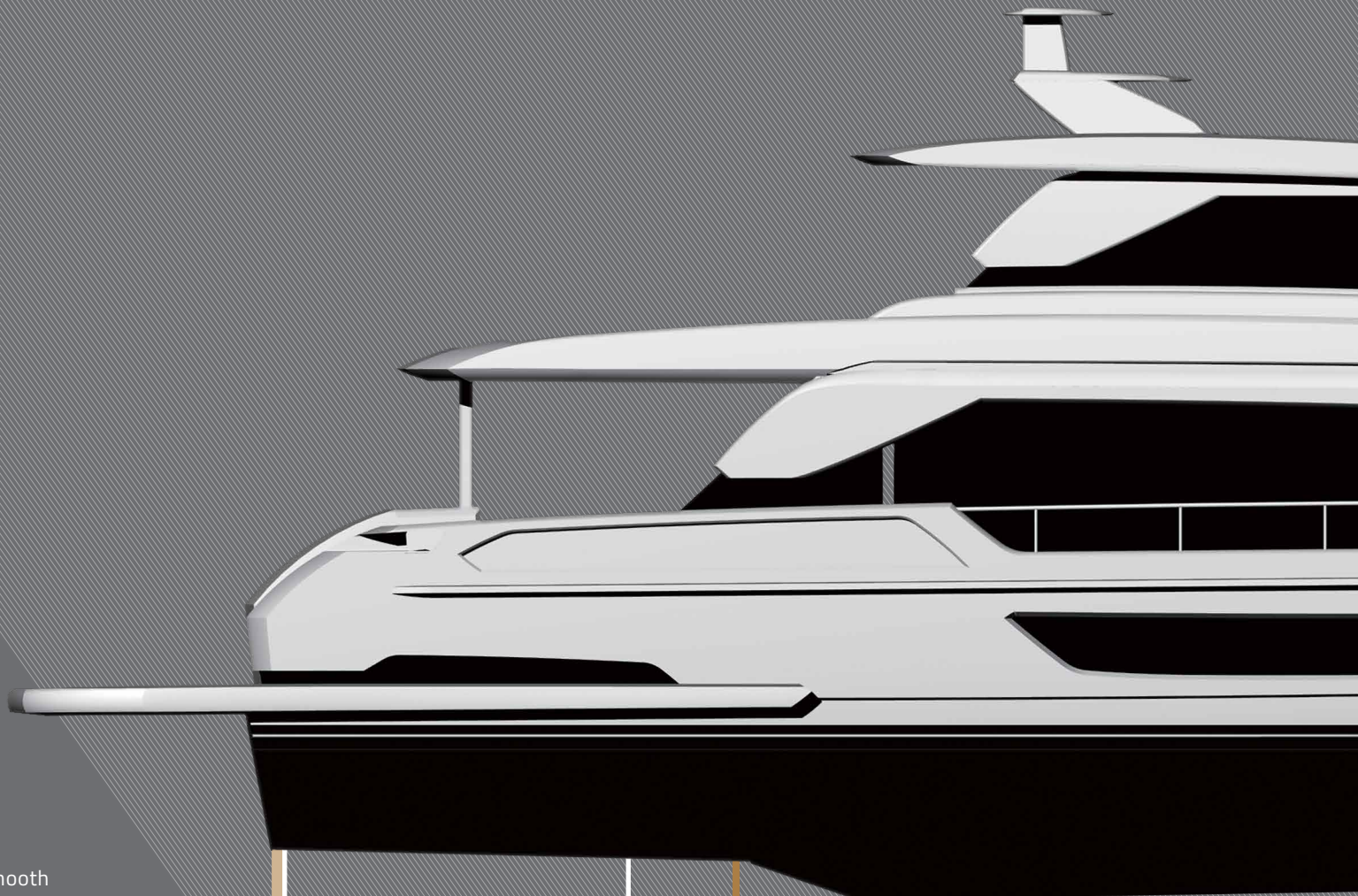
## EFFICIENT CRUISING PERFORMANCE.

The FD Series features a High Performance Piercing Bow (HPPB) - a proprietary design by Horizon Yachts in consultation with Cor Rover. This design, in conjunction with the hybrid hull shape and tunnel design, delivers a shallow draft, more comfortable ride, lower resistance and excellent stability. The HPPB and hull design demonstrated across-the-board hydrodynamic improvements in both tank and CFD testing. While alternative bow designs that feature protrusions work more efficiently at either high or slower speeds, the HPPB brings both efficiency at slower speeds and performance at higher speeds.



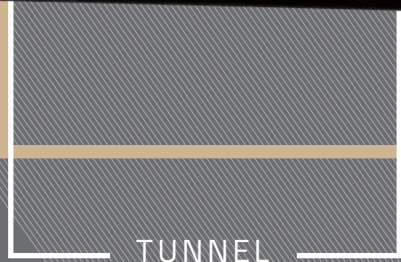


30  
HORIZON



# Hull Design

The FD hull design delivers lower resistance and a smooth transition in all speed ranges for more efficient cruising.



## TUNNEL

A properly designed tunnel will reduce resistance and decrease draft.

## SOFT CHINE

A soft chine midship & aft in the hull generates smaller waves and reduces the resistance hump at hull speed.



## LONG SKEG

The long skeg offers larger lateral underwater surface area and excellent directional stability. These two features offer good maneuverability and increase comfort for onboard guests.

## HARD CHINE

A hard chine at the bow ensures a dry ride and increases the lift force.

## HIGH PERFORMANCE PIERCING BOW

The High Performance Piercing Bow is not only designed for high efficiency but also for a greater hull speed. The submerged sharp bow underwater makes it easier to cut through underwater currents, so the HPPB increases the length of the waterline and reduces the entrance angle of the bow wave. This also enhances ride comfort in head seas by damping the motion while benefitting the hydrodynamic performance across the board.

# Models & Configurations

FD75 // FD80 // FD85 // FD87 // FD92 // FD102 // FD125







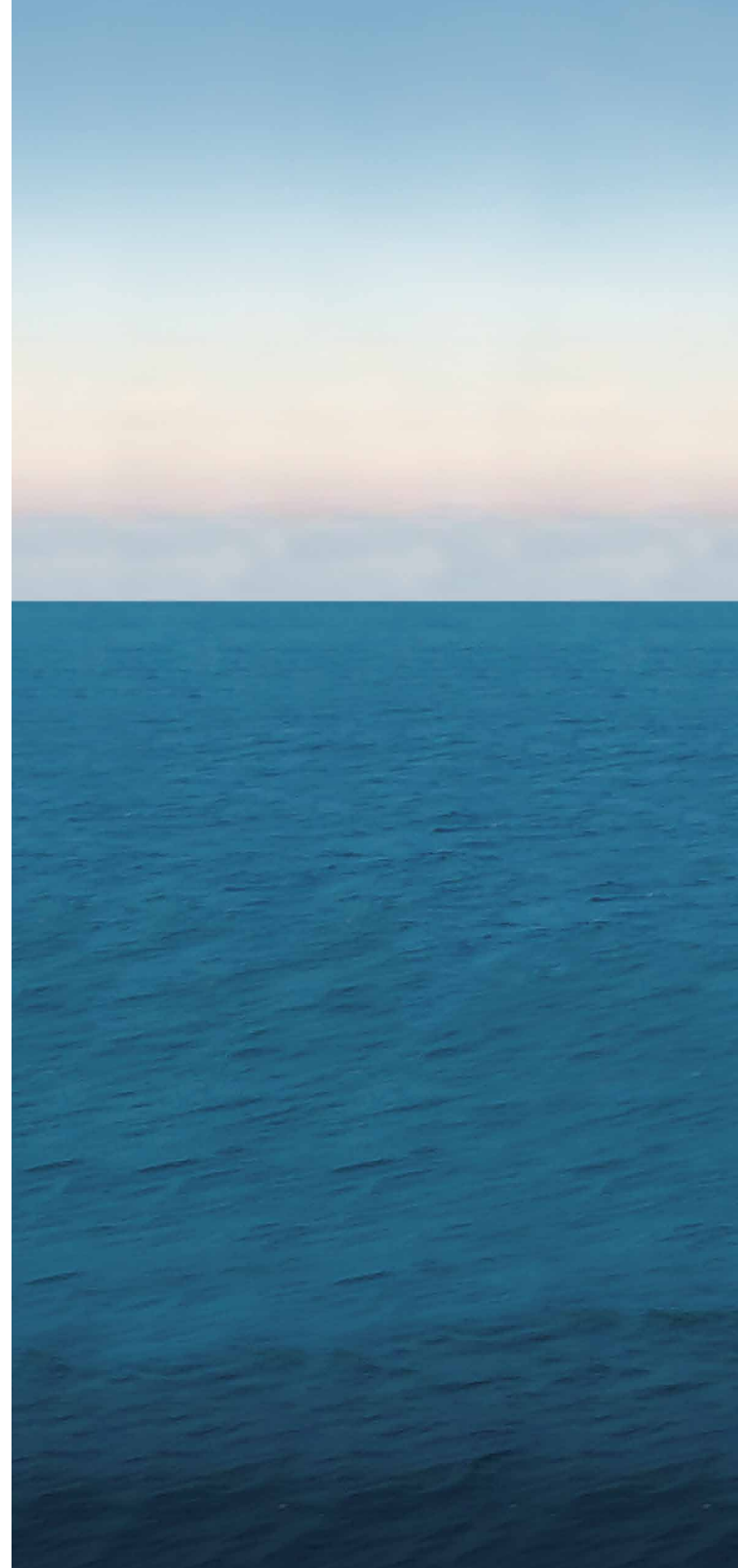
# FD75

*Tailored to the Owner/Operator*

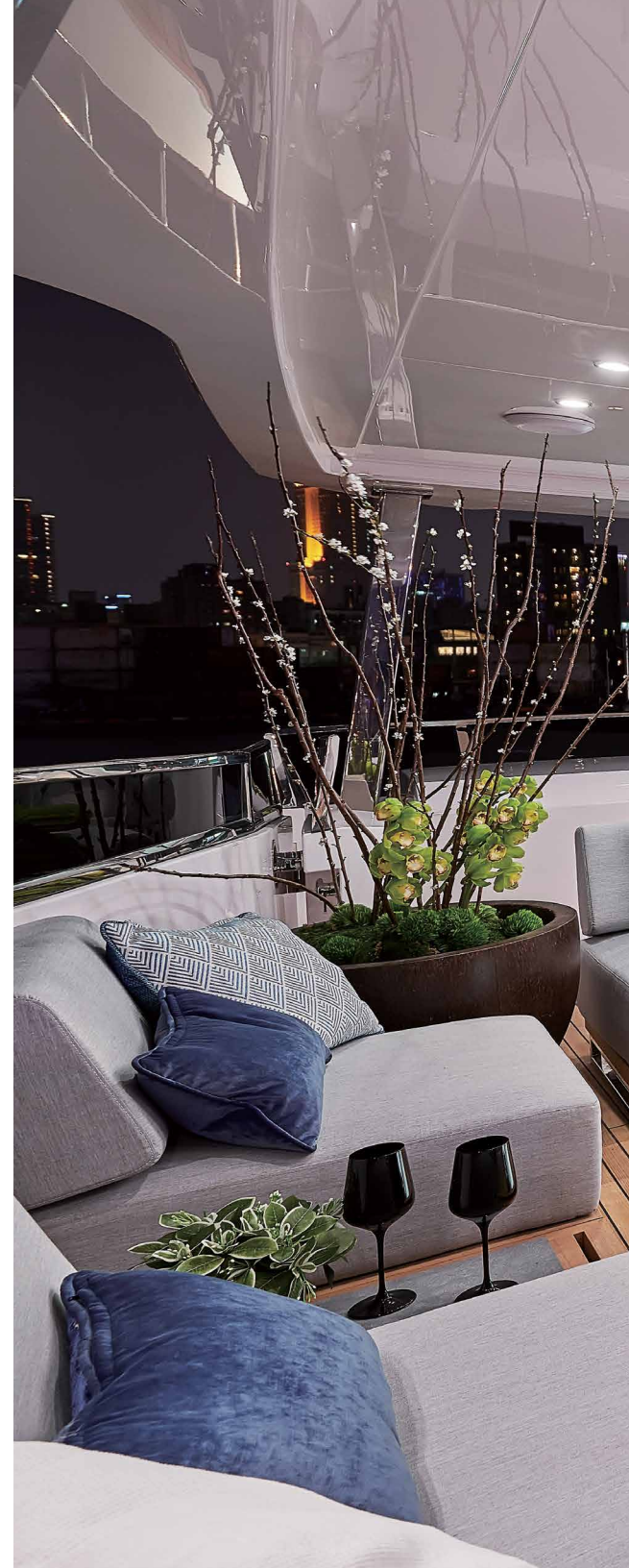
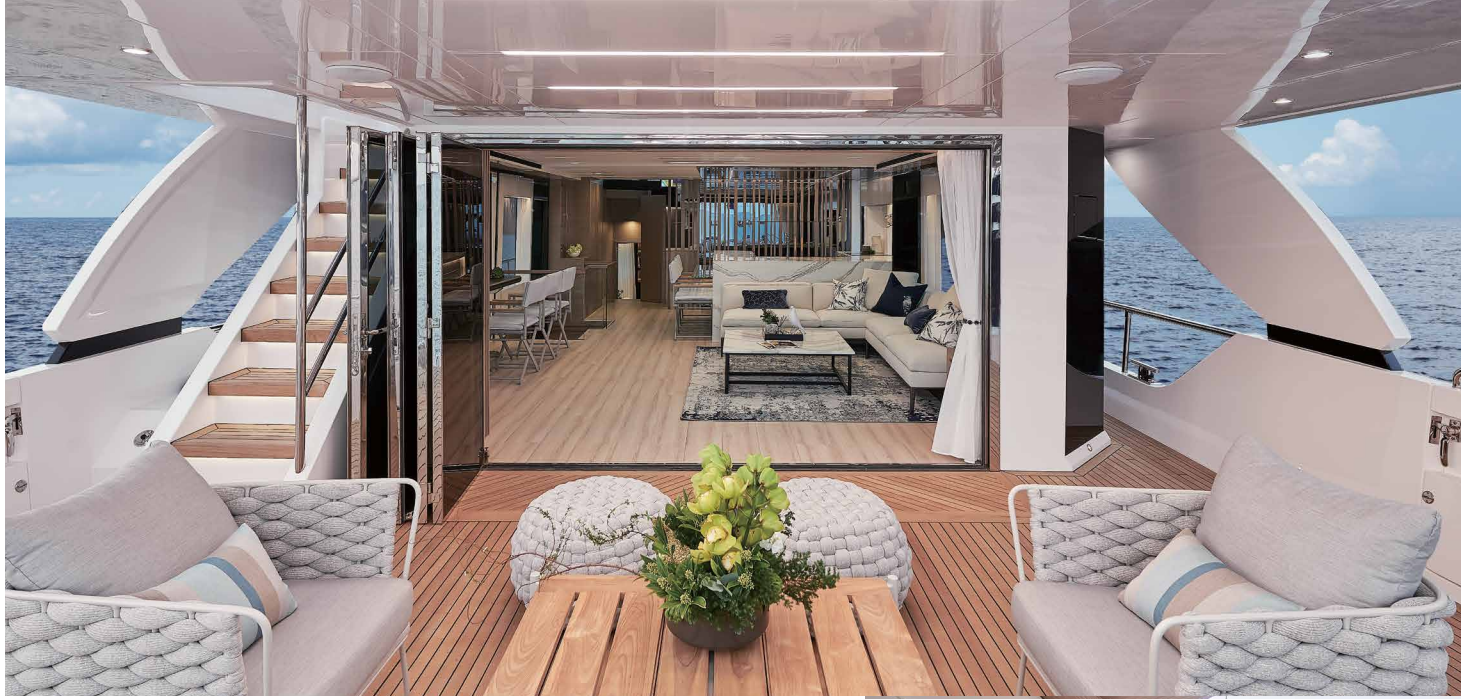
## **THE GAME-CHANGER.**

Taking its place at the entrance of a series known for unparalleled volume, innovative functionality and intelligent layout, the FD75 is a remarkable achievement in terms of design and naval architecture. Intended for owner/operators, the FD75 features a raised pilothouse design that accommodates both an open bridge and a lower helm area. Uniquely, the FD75 is offered in a three or four-stateroom layout, which includes a full-beam, on-deck master stateroom fitted with an en suite and walk-in closets, and two or three spacious staterooms on the lower deck.

Accommodations for two crew members are found aft, and a beach club is optional.







18





Flybridge





**THESE PAGES**  
To achieve layout flexibility with a full-beam, on-deck master and maintain the volume and innovative features that define the FD Series required thoughtful consideration and expert engineering.



**for those who  
change the game**



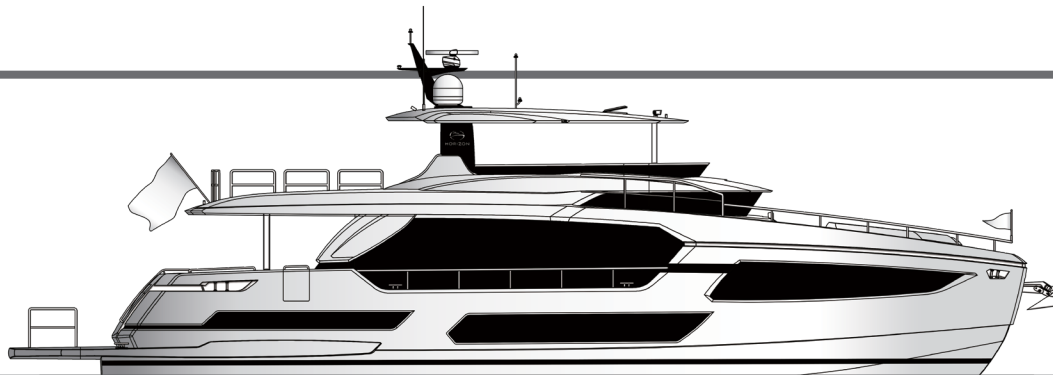
# FD75 Specifications and Layout

L.O.A.	75' (22.86m)
L.W.L.	67' 8" (20.62m)
Beam	20' 4" (6.2m)
Draft	5' 8" (1.72m)
Displacement (half load)	147,709lbs (67 tons)
Fuel Capacity	2,400 US gal (9,085ltrs)
Fresh Water Capacity	300 US gal (1,136ltrs)
Engines	Twin Caterpillar C18 ACERT-1136hp
Generators	Twin Onan 17.5kW (50Hz) or Twin Onan 21.5kW (60Hz)
Max Speed (half load)	19.6 knots
Cruising Range (half load)	1,006nm @ 9.8 knots

## CUSTOMIZATION CAPABILITIES

As with every Horizon yacht, customization is embraced and encouraged. Aboard the new FD75, popular options include incorporating a fully equipped beach club aft, modifying the main salon to feature a formal dining and galley forward arrangement, or incorporating a convertible dining table to maximize the space.

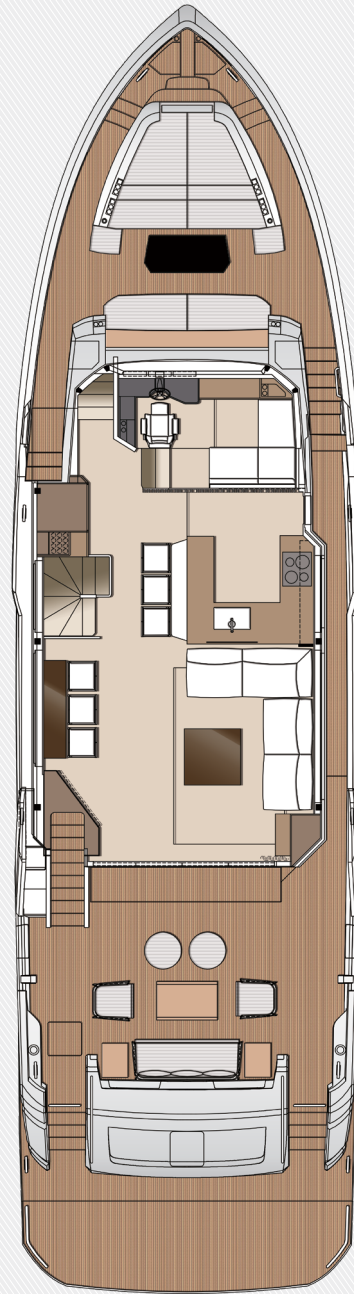
## PROFILE: OPEN BRIDGE



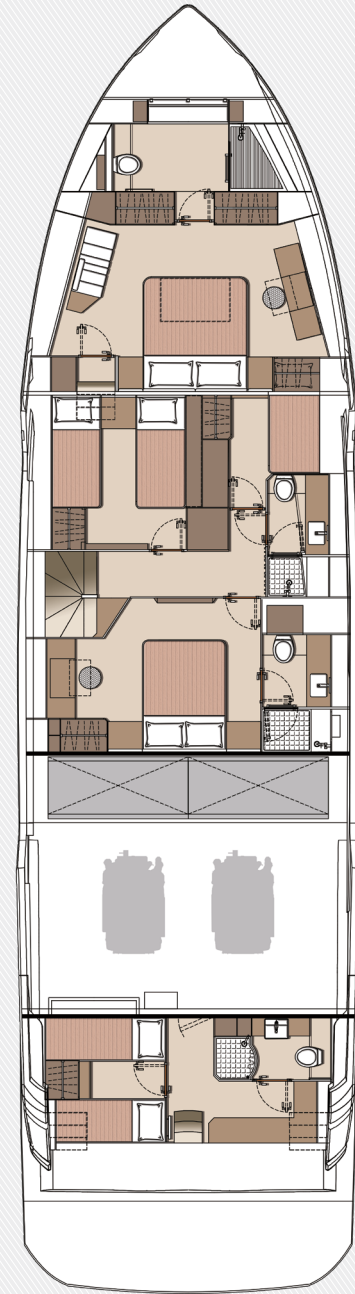




BRIDGE DECK



MAIN DECK



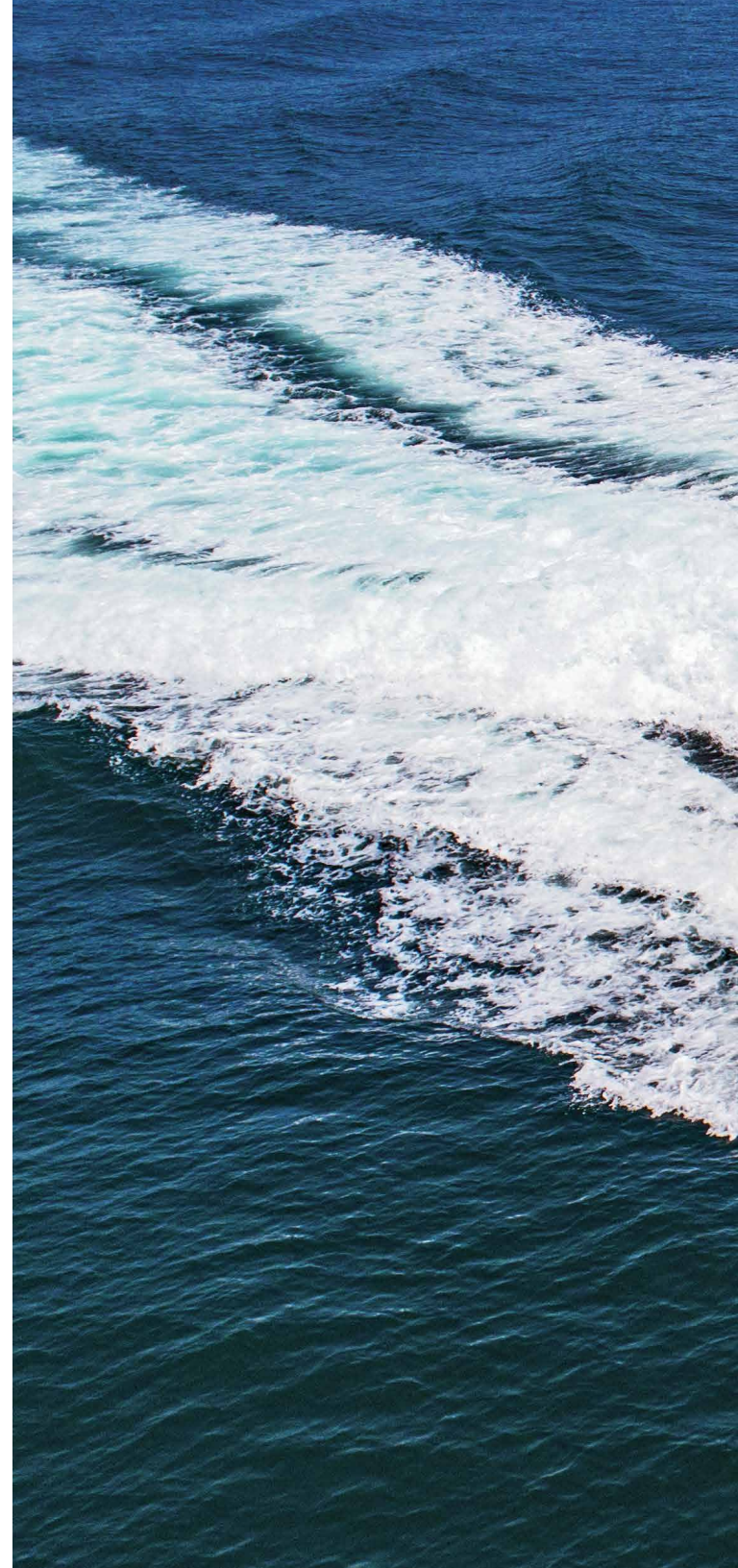
LOWER DECK

# FD80

*On-Deck Master & Beach Club*

## **OWNERSHIP WITHOUT COMPROMISE.**

Designed for ownership without compromise, the FD80 offers four staterooms, including an on-deck master, as well as a fully equipped beach club. The FD Series' signature interior volume is maintained while unique full-height windows augment the openness. Available in a Skyline or Open Bridge configuration, the FD80 boasts functional outdoor spaces that rival those found on 90ft-plus motor yachts. Side wingstations allow for improved visibility while docking and the bridge deck aft is spacious enough to accommodate a 16ft tender.









**THESE PAGES**  
Plentiful headroom  
and a 22' 8" beam  
contribute to the  
spacious interior, which  
is augmented by large  
windows and privacy  
glass for an open feel.



**yacht ownership  
without compromise**





Beach Club



On-Deck Master

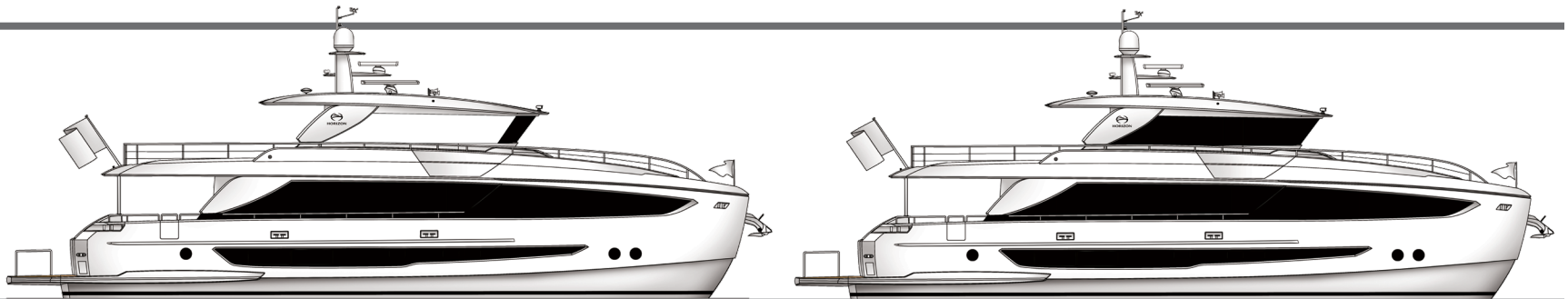
# FD80 *Specifications and Layout*

LOA	80' 7" (24.56m)
LWL	70' 1" (21.35m)
Beam	22' 8" (6.91m)
Draft	5' 3" (1.61m)
Displacement (half load)	174,160lbs (79 tons)
Fuel Capacity	2,700 US gal (10,220ltrs)
Fresh Water Capacity	400 US gal (1,500ltrs)
Engines	Twin CAT C18A - 1136hp
Generators	Twin Onan 27kW (50Hz) or Twin Onan 29kW (60Hz)
Max Speed (half load)	17.4 knots
Cruising Range (half load)	1,700nm @ 10 knots

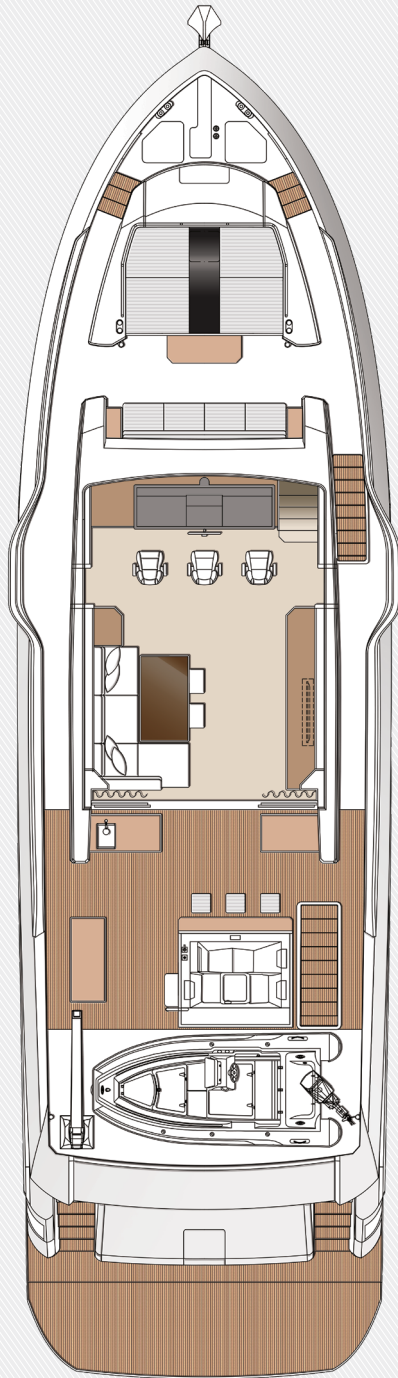
## CUSTOMIZATION CAPABILITIES

As with every Horizon yacht, customization is embraced and encouraged. Aboard the FD80, owners can select the Open Bridge with a fixed windscreen or a fully enclosed Skyline configuration. The interior dining and galley area as well as the foredeck lounging and cocktail area are popular spaces for owner customization.

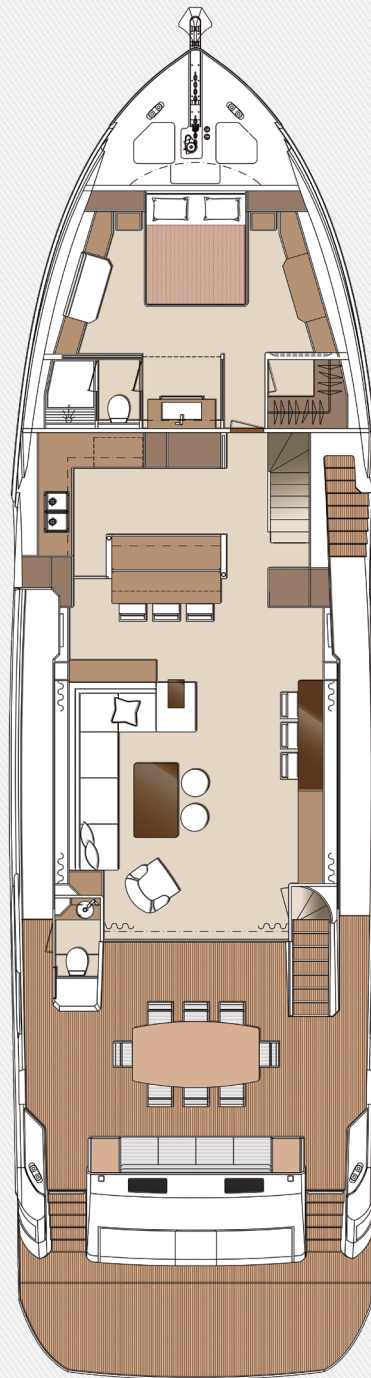
## PROFILE OPTIONS: OPEN BRIDGE & SKYLINE







BRIDGE DECK



MAIN DECK



LOWER DECK

# FD85

*Style, Space, Amenities*

## **DARE TO BE DIFFERENT.**

The first model introduced in the FD Series, the FD85 boasts a hull design that not only provides optimal performance but also allows for voluminous interior and exterior spaces in an attractive package. Marked by a striking profile that features a vertical bow and plentiful full-height glass windows, the FD85 has been designed throughout with entertainment and seakeeping in mind. The FD85 can easily be managed by an experienced owner/operator and also has the capability to accommodate crew.







Main Salon



**THESE PAGES**  
Within its beamy interior, the FD85 can be customized to suit your style. Areas from the salon to the galley to the staterooms can be outfitted with your selection of wood, stone and finishes.





Open Bridge



Deck Areas







**THESE PAGES**

The Open Bridge on the FD85 provides a magnificent area for relaxing and entertaining.

**looks + volume.  
built for cruising**



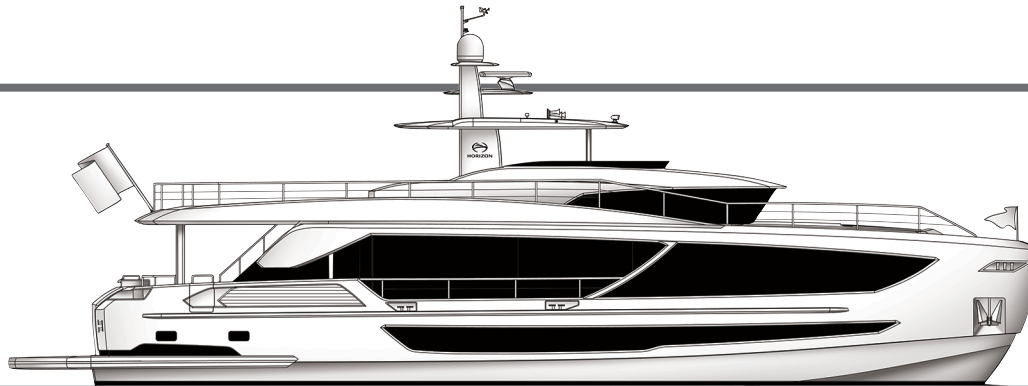
# FD85 *Specifications and Layout*

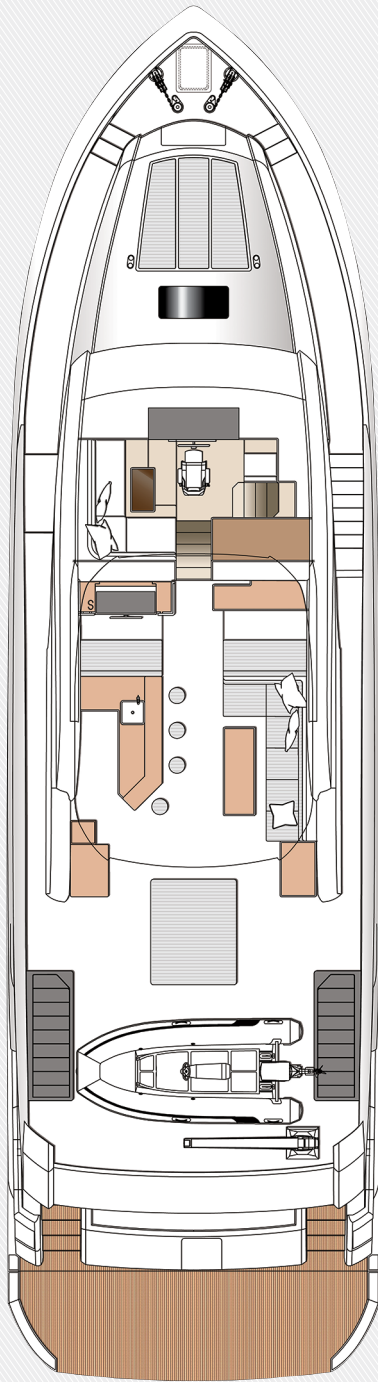
<b>LOA</b>	85' 7" (26.07m)
<b>LWL</b>	76' 2" (23.21m)
<b>Beam</b>	23' 4" (7.11m)
<b>Draft</b>	5' 9" (1.76m)
<b>Displacement (half load)</b>	196,210lbs (89 tons)
<b>Fuel Capacity</b>	3,480 US gal (13,170ltrs)
<b>Fresh Water Capacity</b>	400 US gal (1,500ltrs)
<b>Engines</b>	Twin CAT C18A - 1136hp
<b>Generators</b>	Twin Onan 27kW (50Hz) or Twin Onan 29kW (60Hz)
<b>Max Speed (half load)</b>	16.7 knots
<b>Cruising Range (half load)</b>	1,780nm @ 10 knots

## CUSTOMIZATION CAPABILITIES

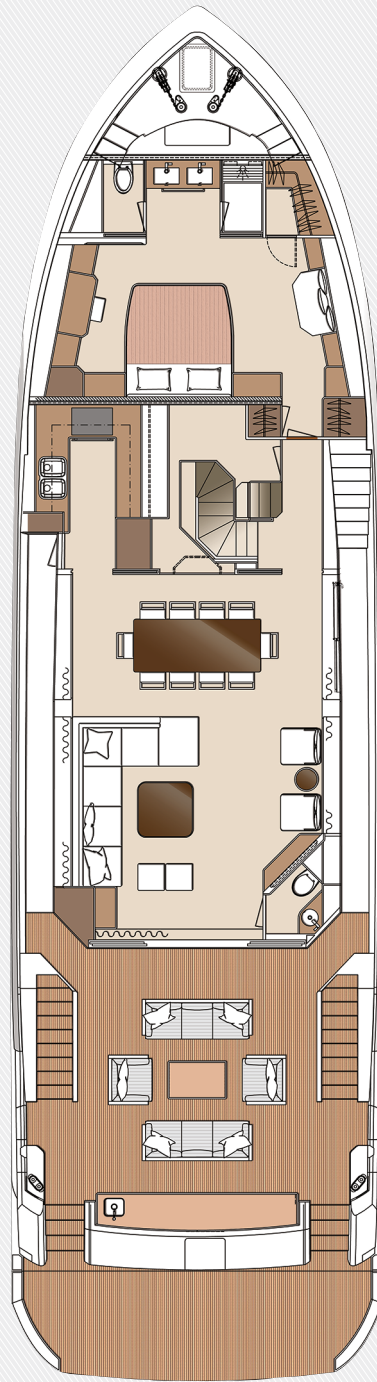
The FD85 can be customized to suit owners worldwide, and has been designed for the European, Australian and American markets. Popular customizations include a retractable sunroof, interior layout changes, and even a touch-and-go-helipad with a carbon fiber hardtop!

## PROFILE: OPEN BRIDGE

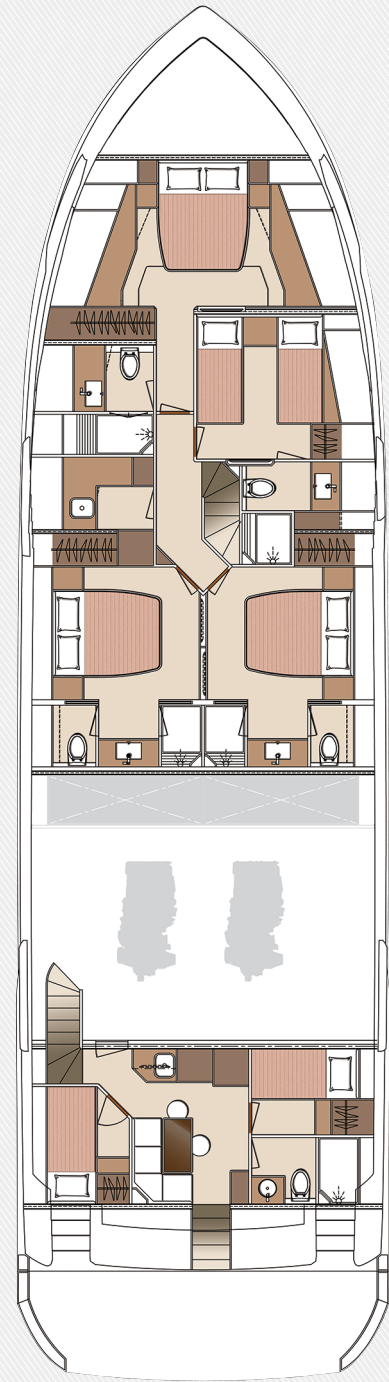




BRIDGE DECK



MAIN DECK



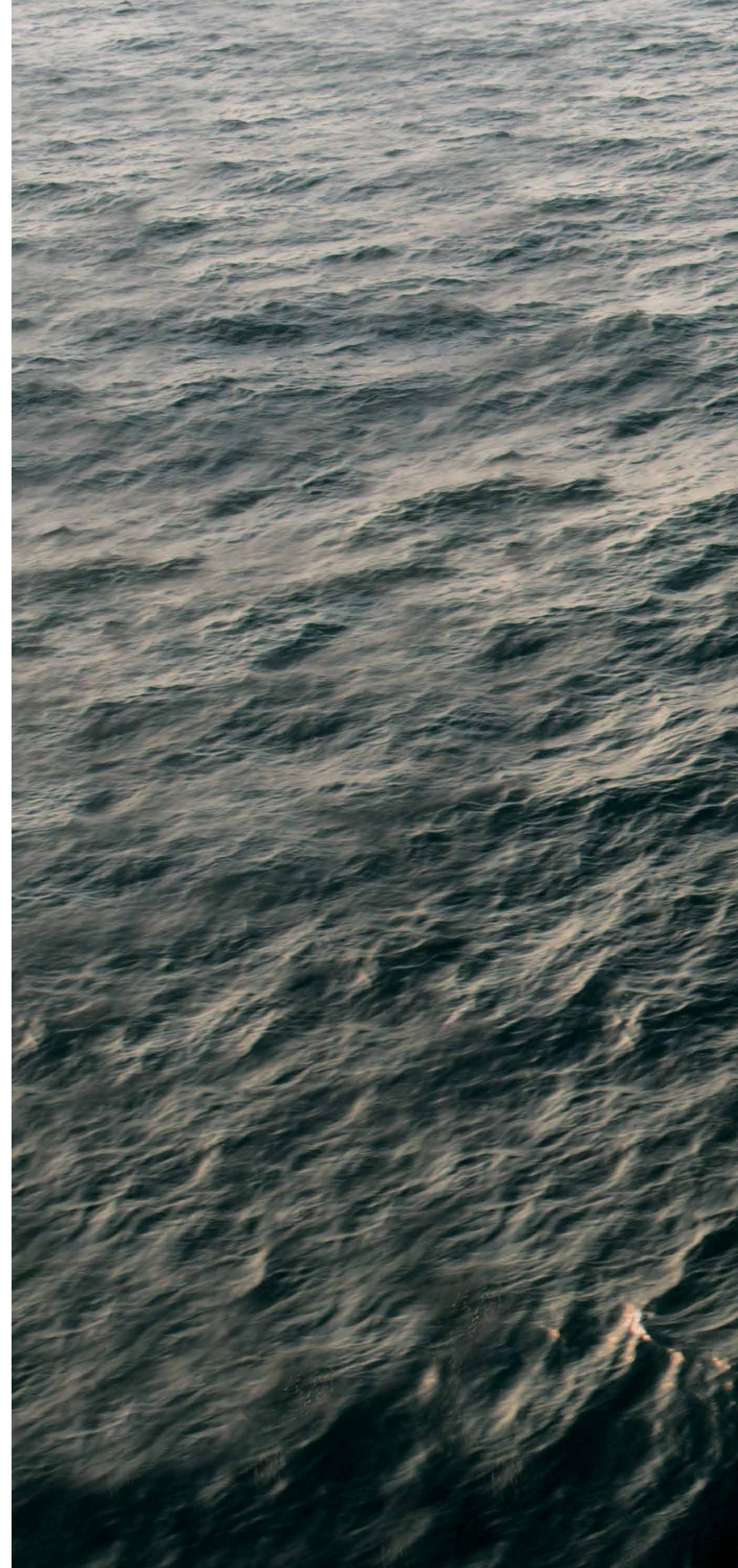
LOWER DECK

# FD87

*Five Staterooms, Infinite Options*

## **DISRUPTIVE INNOVATION IN ITS MOST BEAUTIFUL FORM.**

Marked by contemporary lines, tremendous interior volume, and ingenious functionality, the FD87 sets the benchmark for innovation in yacht design. The most popular model in the FD Series, the FD87 is supported by Horizon's High Performance Piercing Bow and offers the option of a fully equipped beach club as well as five guest staterooms including an on-deck master. Packed with amenities within its 23' 4" beam, this advanced mid-range yacht marries space with style and performance.







Main Salon





**THESE PAGES**

Horizon Design Center works with each owner to select the wood, stonework, glassware, fixtures and finishes that best complement the intended onboard lifestyle.

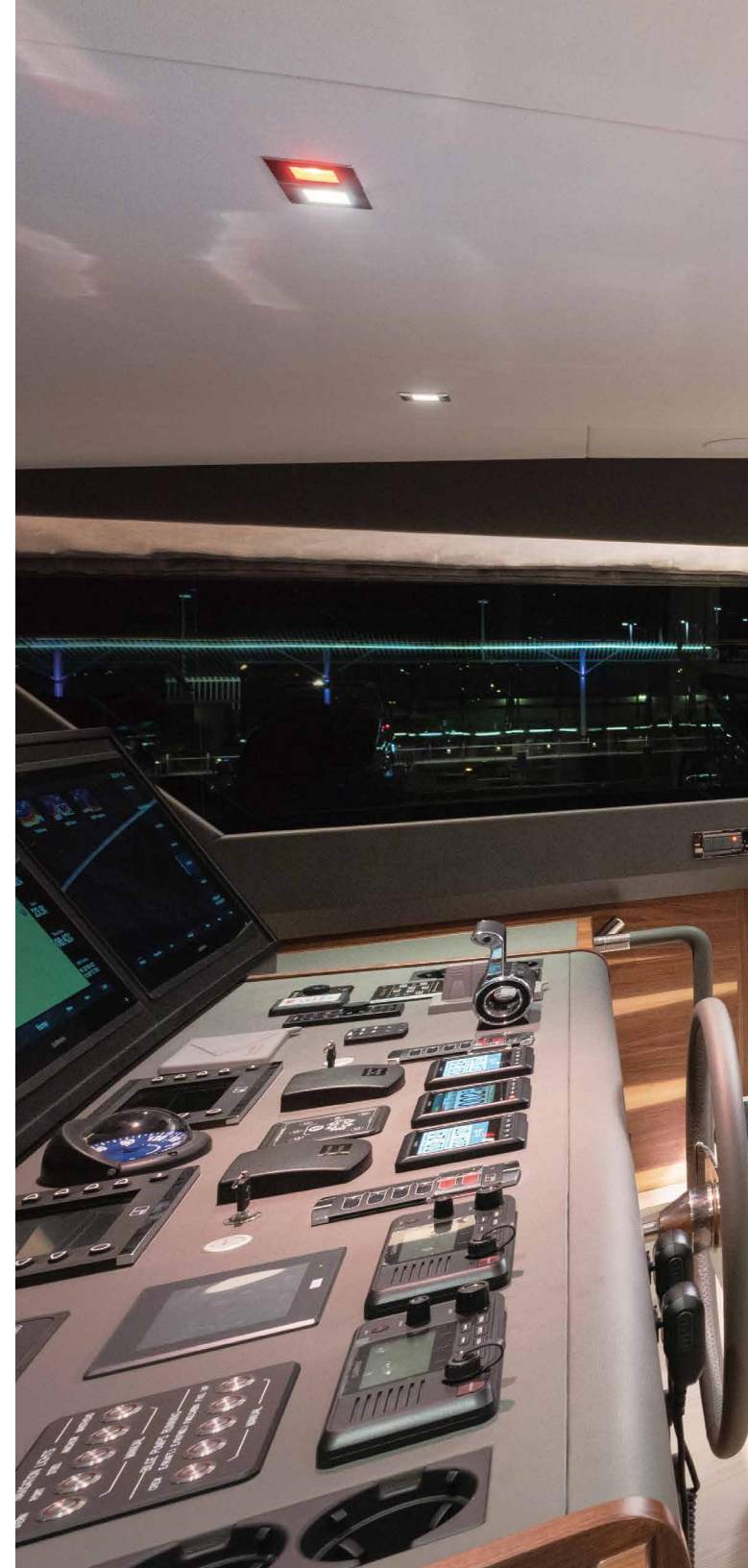


**innovative +  
multifunctional**





Skyline Layout





Bridge

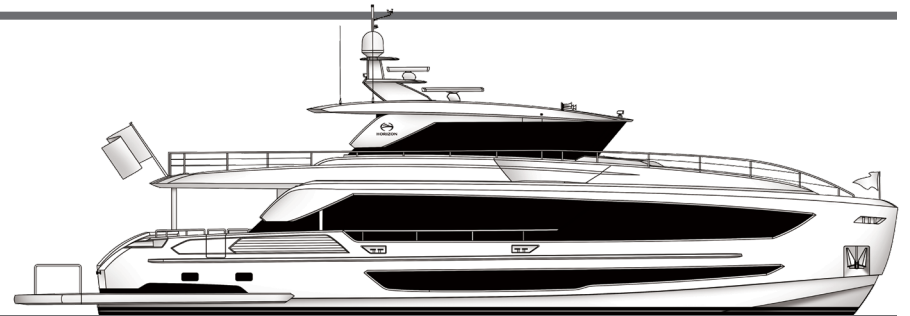
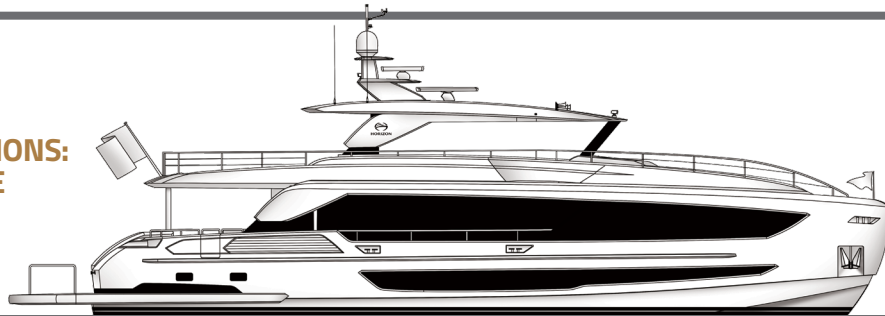
# FD87 Specifications and Layout

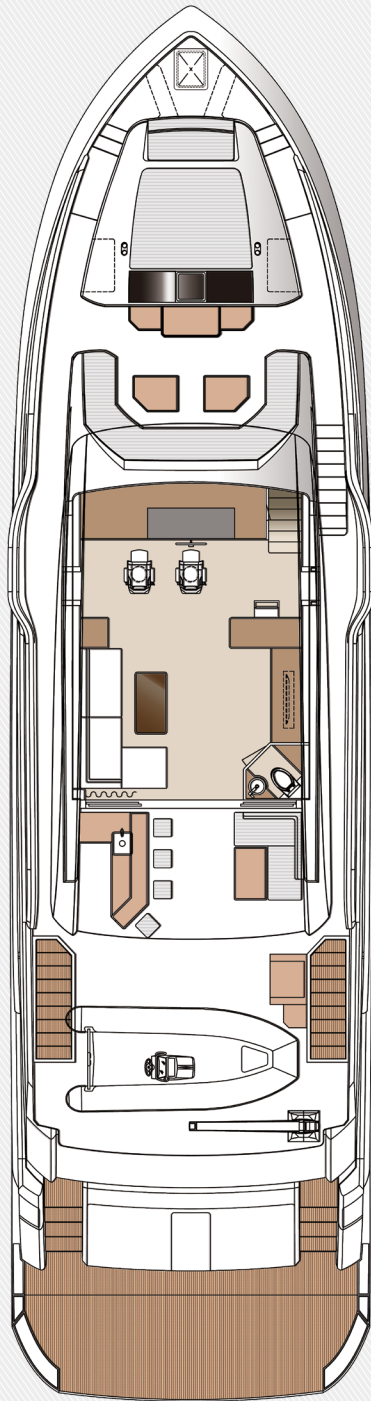
LOA	90' 1" (27.45m)
LWL	78' 1" (23.81m)
Beam	23' 4" (7.11m)
Draft	5' 11" (1.79m)
Displacement (half load)	209,440lbs (95 tons)
Fuel Capacity	3,480 US gal (13,170ltrs)
Fresh Water Capacity	400 US gal (1,500ltrs)
Engines	Twin CAT C18A - 1136hp
Generators	Twin Onan 27kW (50Hz) or Twin Onan 29kW (60Hz)
Max Speed (half load)	16 knots
Cruising Range (half load)	1,640nm @ 10 knots

## CUSTOMIZATION CAPABILITIES

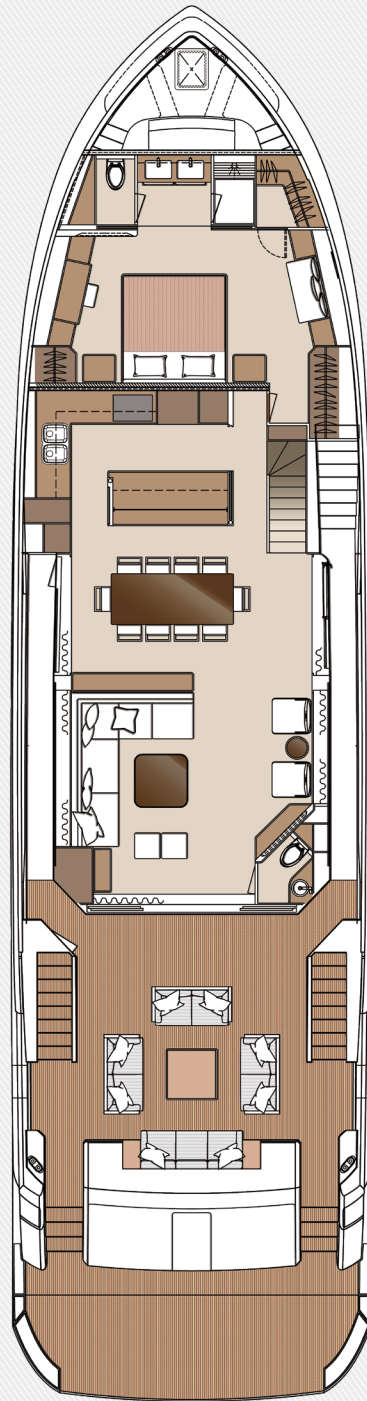
The opportunities for customization aboard the FD87 are limited only by the imagination. Owners can select Open Bridge or Skyline configurations, stateroom layouts, crew quarters and beach club options. The large foredeck area is a popular space for incorporating storage, refrigeration and shaded sunpads for even more al fresco dining and relaxation opportunities.

## PROFILE OPTIONS: OPEN BRIDGE & SKYLINE





BRIDGE DECK



MAIN DECK



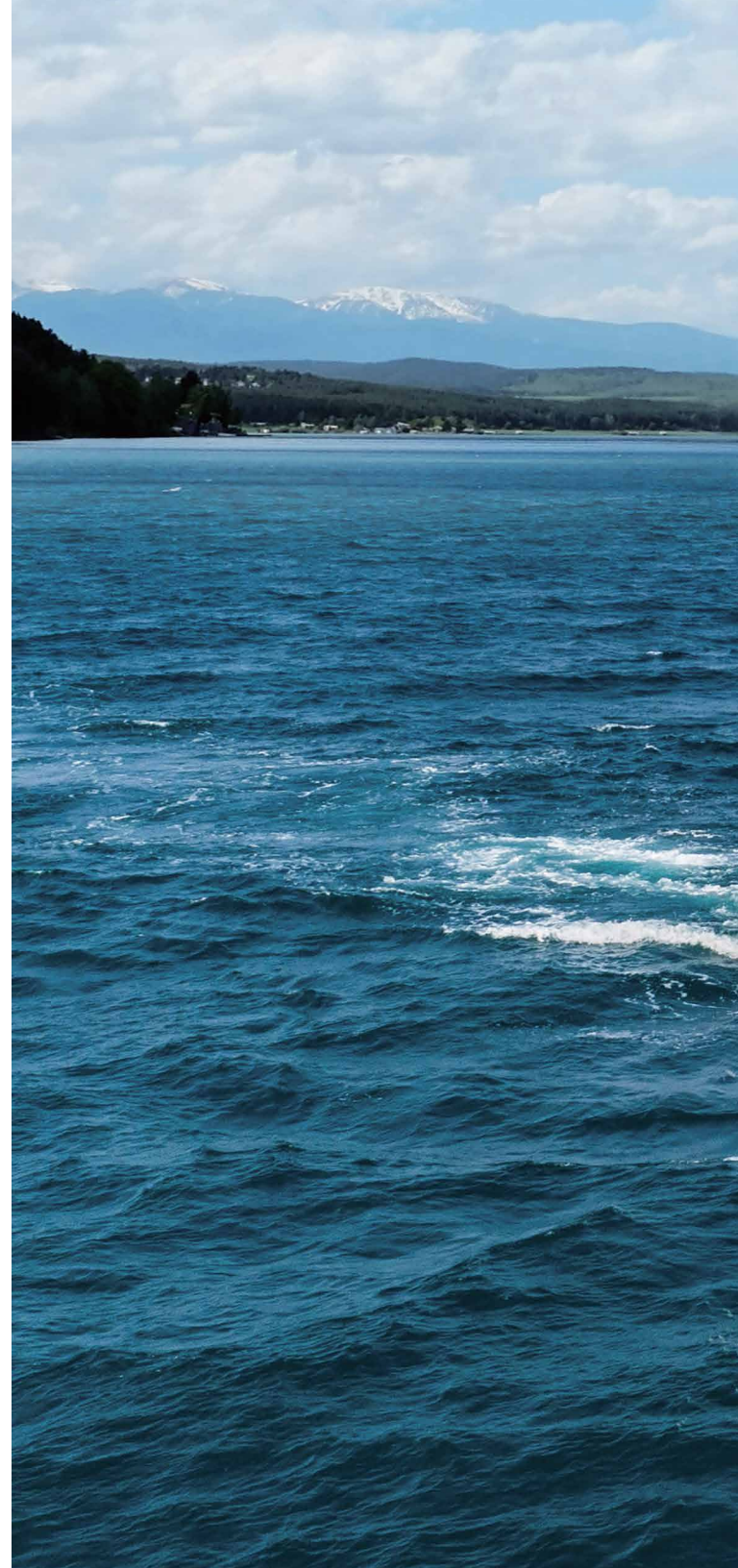
LOWER DECK

# FD92

*Tri-Deck Superstructure*

## **A DESIGN EVOLUTION.**

The new FD92 concept design features a unique tri-deck superstructure perched atop an extended hullform. The tri-deck design – the first ever for the FD Series – offers a five-stateroom layout with an on-deck master, crew quarters for three and a beach club. Inspired by the volume and space of the FD87, the FD92 fits the criteria for owners looking for the best of both worlds - with both interior and exterior areas maximized throughout. The lightweight flybridge provides an additional open space for helming or relaxing without compromising performance.







Deck Areas





Tri-Deck Layout

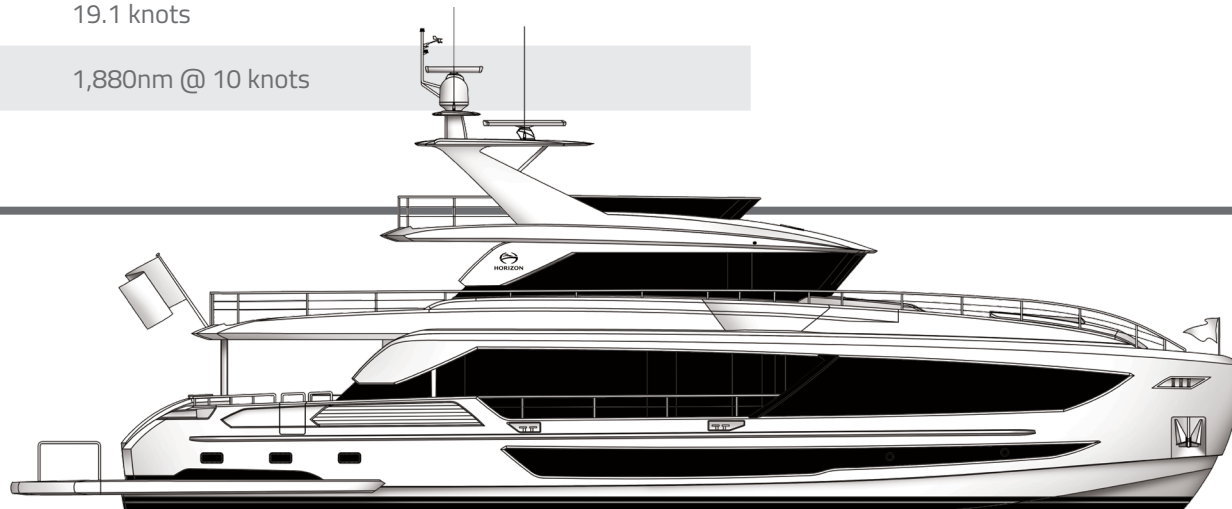
# FD92 Specifications and Layout

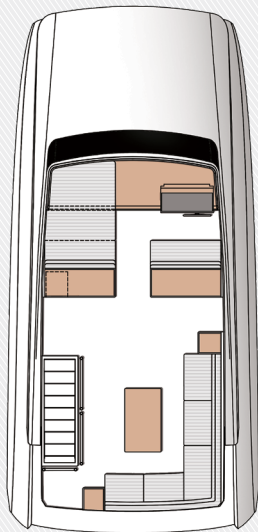
<b>LOA</b>	94' 1" (28.66m)
<b>LWL</b>	80' 10" (24.64m)
<b>Beam</b>	23' 4" (7.11m)
<b>Draft</b>	6' (1.83m)
<b>Displacement (half load)</b>	235,890lbs (107 tons)
<b>Fuel Capacity</b>	4,000 US gal (15,140ltrs)
<b>Fresh Water Capacity</b>	400 US gal (1,500ltrs)
<b>Engines</b>	Twin MTU 10V2000 M96L - 1600hp
<b>Generators</b>	Twin Onan 40kW (50Hz) or Twin Onan 40kW (60Hz)
<b>Max Speed (half load)</b>	19.1 knots
<b>Cruising Range (half load)</b>	1,880nm @ 10 knots

## CUSTOMIZATION CAPABILITIES

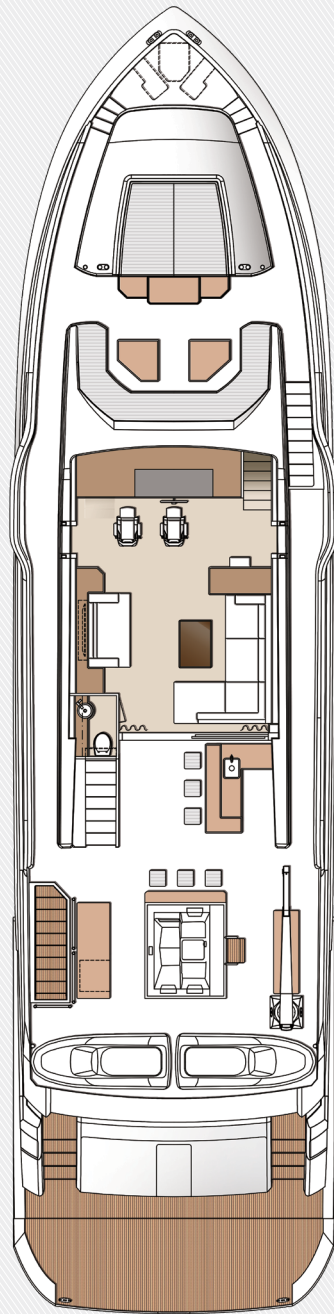
The FD92 is a customization in and of itself, having been born from the drawings of an FD87. The owner desired a tri-deck layout, which was easily incorporated with a hull extension, affording even more exterior deck space and an uppermost deck that can be shaded with a bimini top.

## PROFILE: SKYLINE

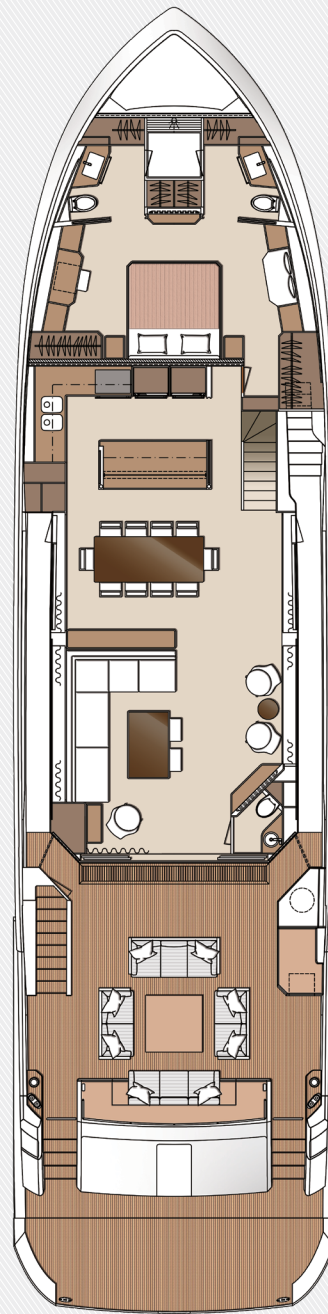




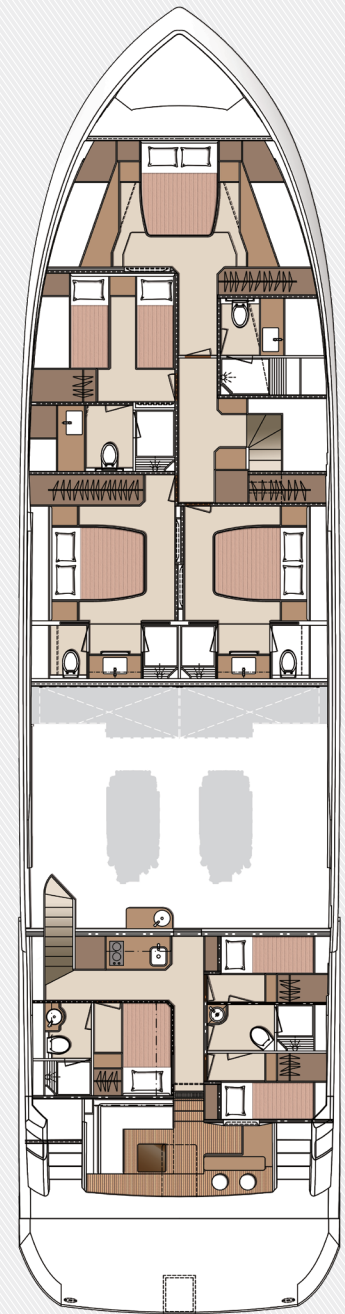
SUN DECK



BRIDGE DECK



MAIN DECK



LOWER DECK

# FD102

*Superyacht Style with Sport Performance*

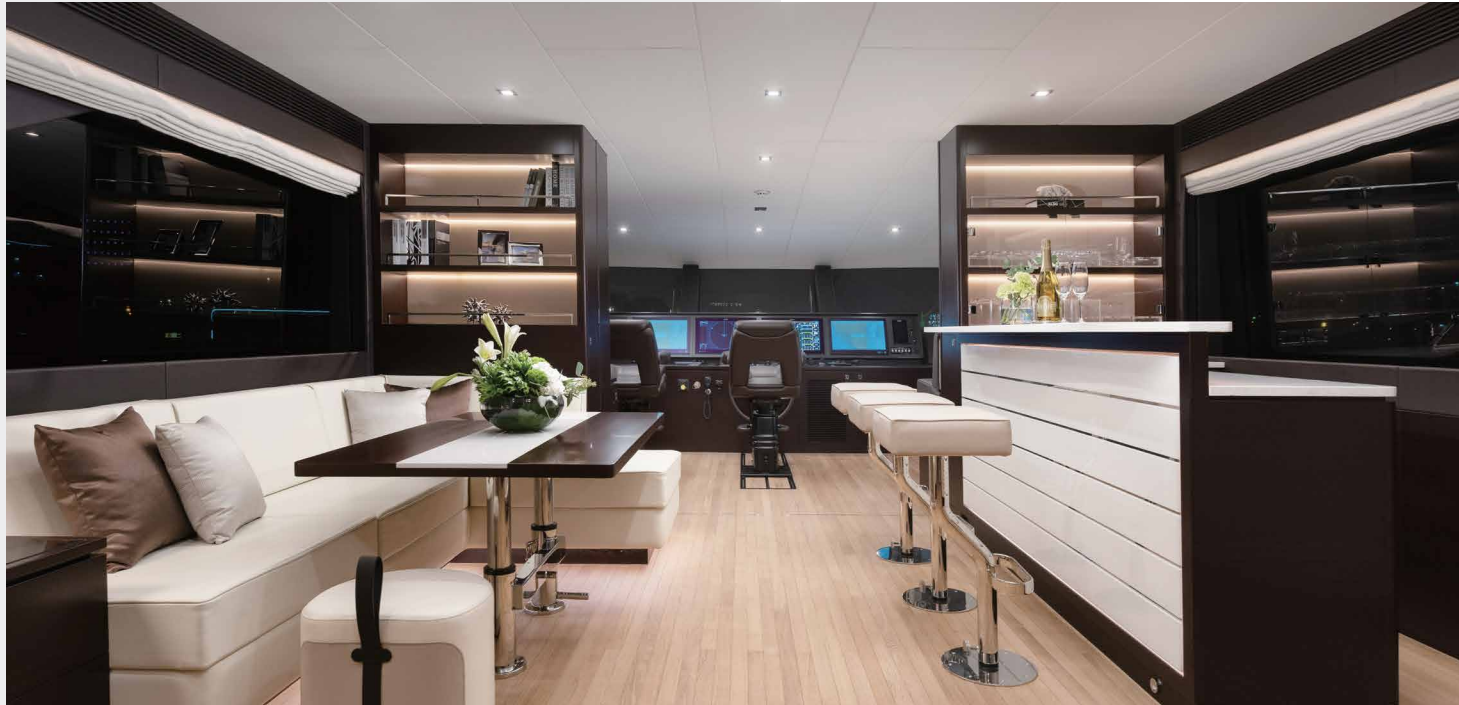
## **EXTENDED RANGE, AUGMENTED AMENITIES.**

At an overall length of 107 feet and accommodating a voluminous interior within a 24' 10" beam, the FD102 is the first "superyacht" model in the FD Series. Fitted with innovative amenities throughout, the FD102 can be configured with double salons, an on-deck master stateroom, and a spacious four-stateroom-layout on the lower deck. The FD102 accommodates up to three crewmembers, and a walkaround design on the bridge deck level maintains the privacy of the interior spaces while providing a seamless transition between outdoor entertaining areas.









**THESE PAGES**  
Augmented by the generous volume that defines the Series, the FD102 is further enhanced by large windows and luxurious finishes.



**superyacht style.  
smooth cruising**





Main Deck Aft





Bridge Deck Aft

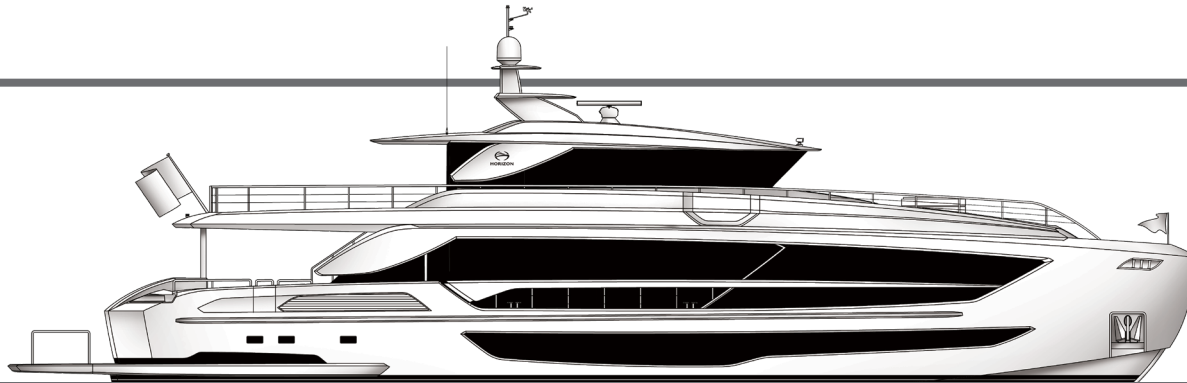
# FD102 *Specifications and Layout*

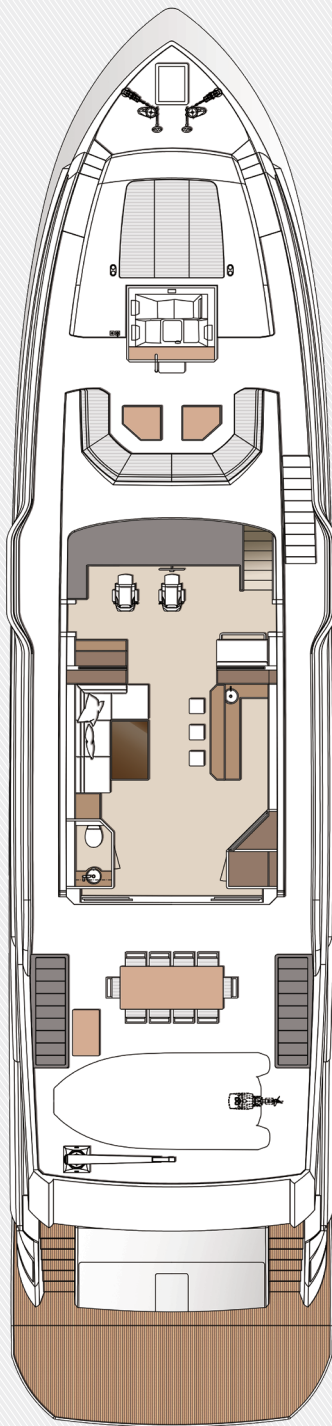
<b>LOA</b>	107' 6" (32.75m)
<b>LWL</b>	92' 6" (28.19m)
<b>Beam</b>	24' 10" (7.57m)
<b>Draft</b>	6' (1.82m)
<b>Displacement (half load)</b>	277,780lbs (126 tons)
<b>Fuel Capacity</b>	4,500 US gal (17,030ltrs)
<b>Fresh Water Capacity</b>	800 US gal (3,025ltrs)
<b>Engines</b>	Twin CAT C32A - 1600hp
<b>Generators</b>	Twin Onan 50kW (50Hz) or Twin Onan 55kW (60Hz)
<b>Max Speed (half load)</b>	17 knots
<b>Cruising Range (half load)</b>	1,700nm @ 10 knots

## CUSTOMIZATION CAPABILITIES

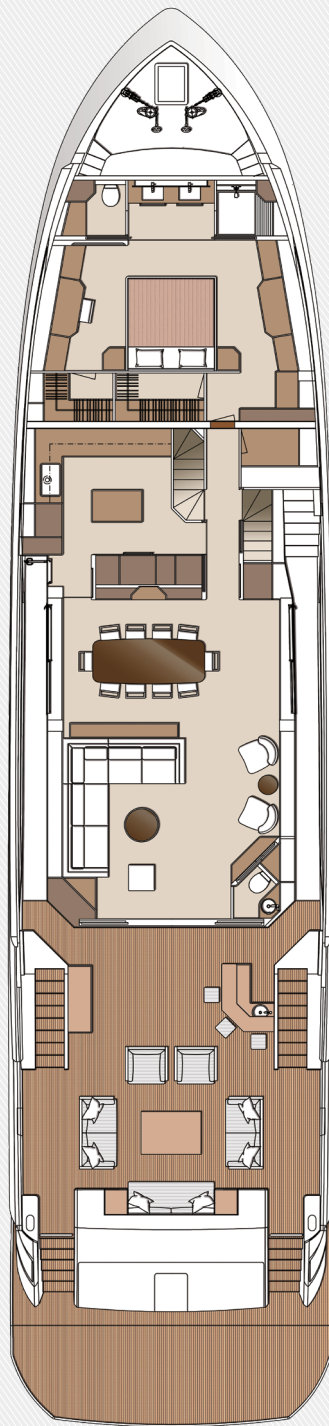
Each owner is invited to visit Horizon's state-of-the-art facilities in Taiwan during the build process. Here, the owner will meet with engineering and design teams to customize the yacht to suit the vision. Every request is analyzed and engineered to ensure stability, safety and performance are maintained.

## PROFILE: SKYLINE

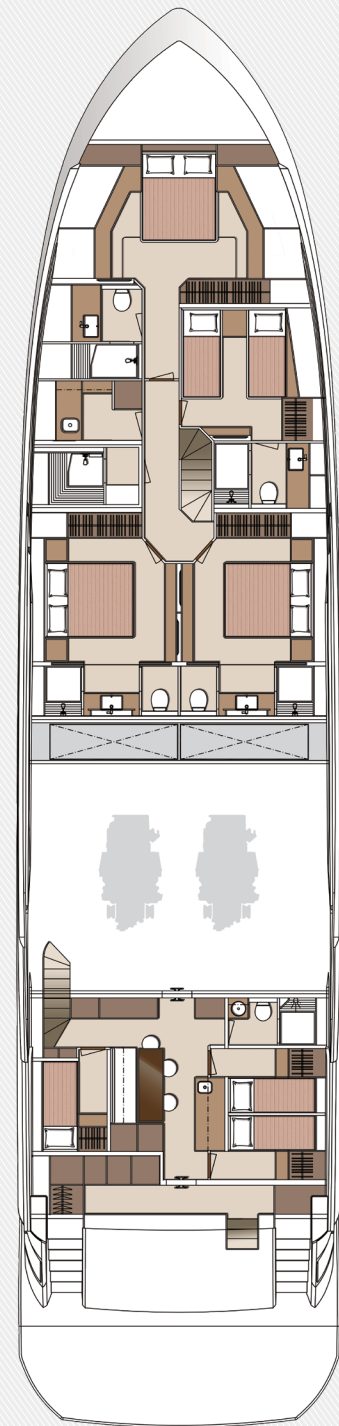




BRIDGE DECK



MAIN DECK



LOWER DECK

# FD125

*Elegance, Volume and Versatility*

## **DARING TO BE BOLDER.**

The largest concept offered in the acclaimed FD Series, the FD125 makes an elegant entrance, with her head-turning superyacht styling matched by superb performance and stability beneath the waterline. The FD125 incorporates double salons, a spacious galley, five staterooms including an on-deck master, and accommodations for eight crew.







Beach Club



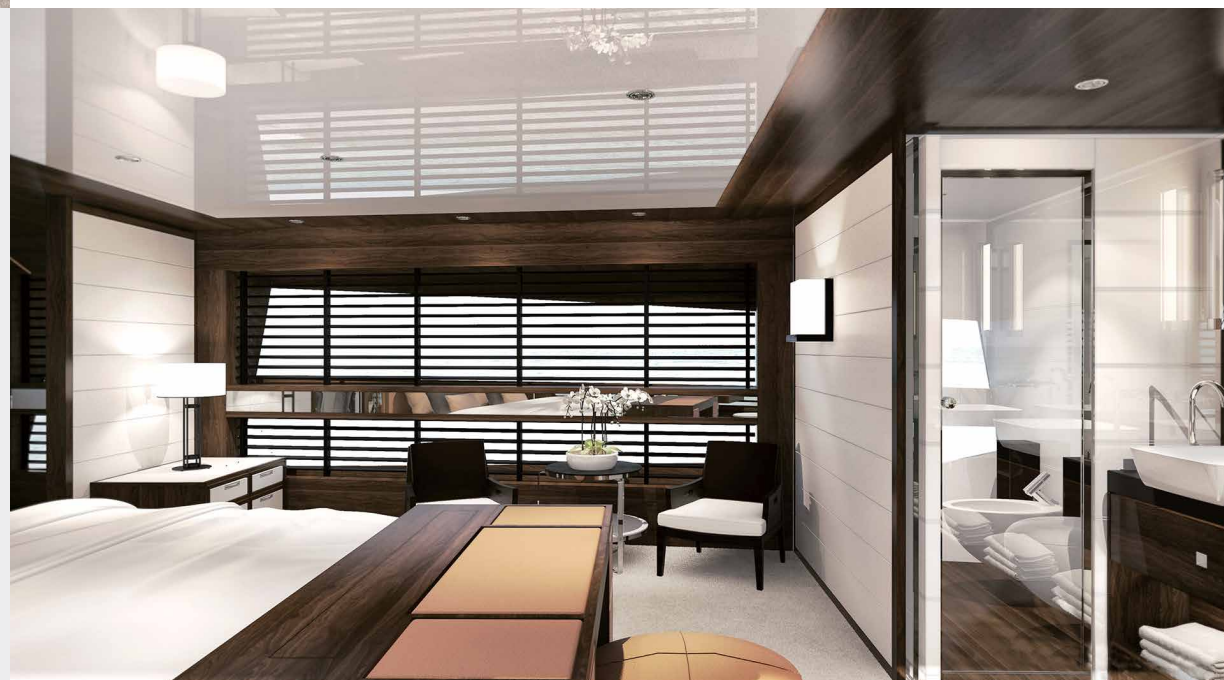
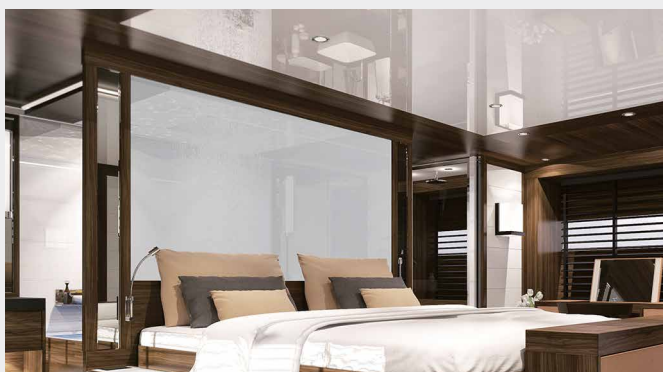
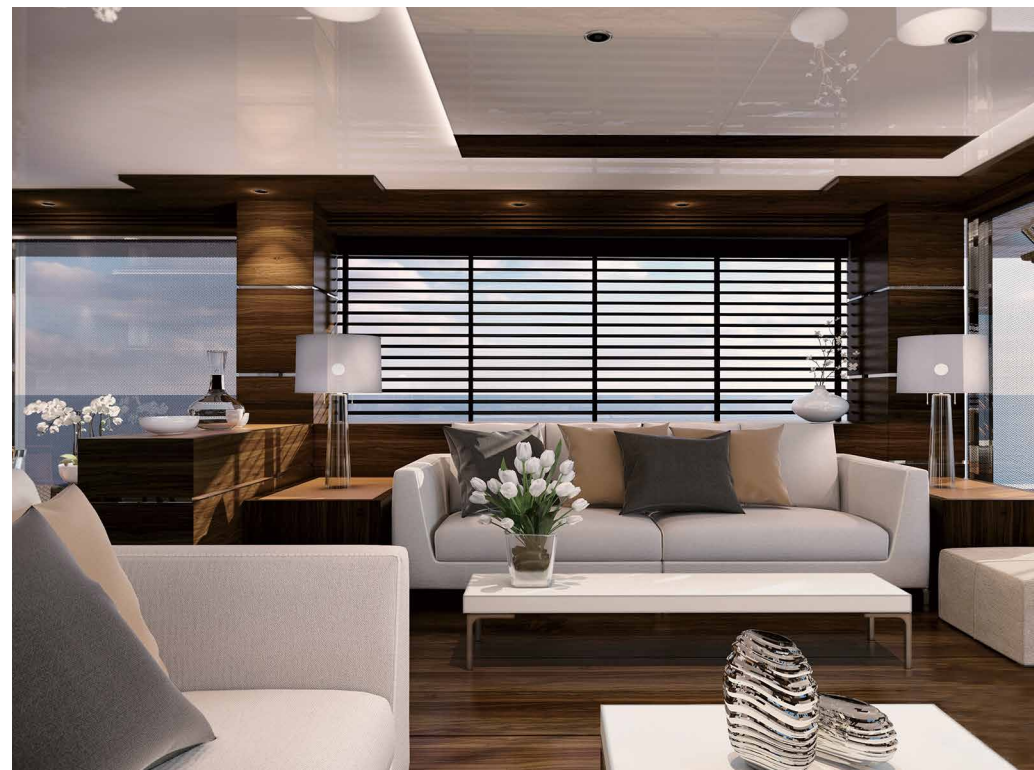
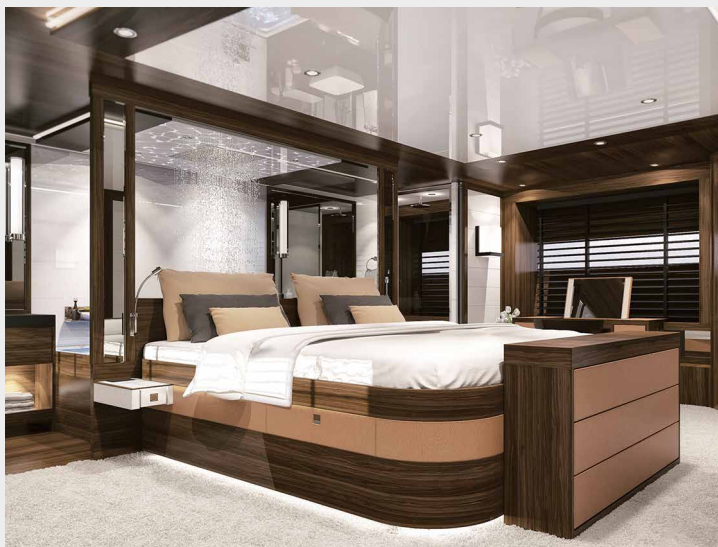
Main Salon



On-Deck Master



# elegance + performance



## THESE PAGES

The FD125 superyacht features a sophisticated interior exuding luxury and style. The five-stateroom layout is paired with exterior deck options and stability and comfort below the waterline.

# FD125 *Specifications and Layout*

<b>LOA</b>	125' (38.1m)
<b>LWL</b>	109' 10" (33.48m)
<b>Beam</b>	26' 3" (8m)
<b>Draft</b>	5' 7" (1.7m)
<b>Displacement (half load)</b>	352,740lbs (160 tons)
<b>Fuel Capacity</b>	8,000 US gal (30,280ltrs)
<b>Fresh Water Capacity</b>	600 US gal (2,270ltrs)
<b>Engines</b>	Twin CAT C32A - 1800hp
<b>Generators</b>	Twin Onan 50kW (50Hz) or Twin Onan 55kW (60Hz)
<b>Max Speed (half load)</b>	18.5 knots
<b>Cruising Range (half load)</b>	3,300nm @ 12 knots

## CUSTOMIZATION CAPABILITIES

The FD125 is truly a fully custom build, which allows owners to capitalize on the engineering and proven performance of Horizon's proprietary High Performance Piercing Bow and hull design as well as the voluminous and bright interior spaces that define the FD Series.

## PROFILE: SKYLINE

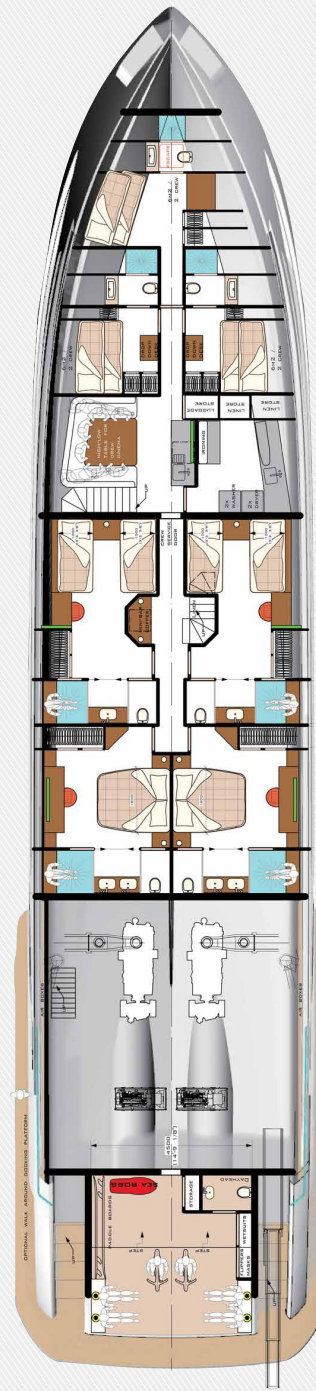




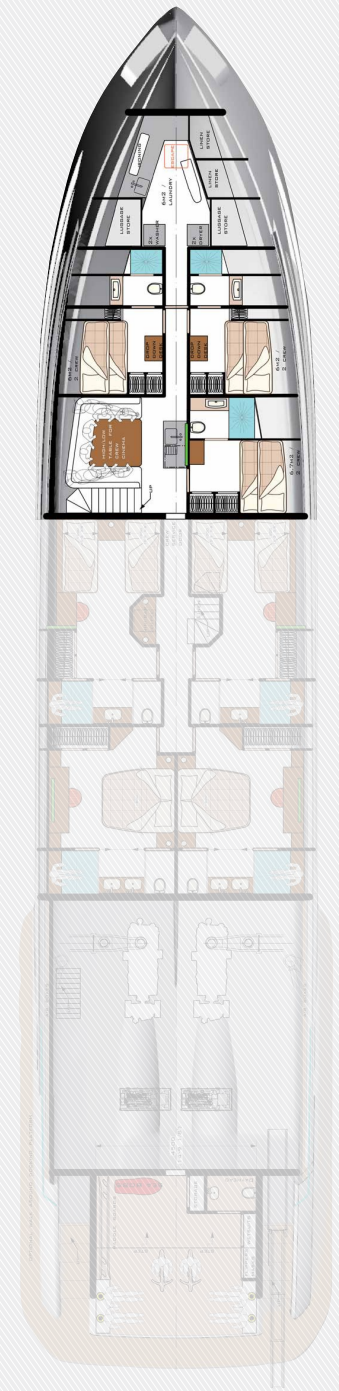
BRIDGE DECK



MAIN DECK



LOWER DECK



LOWER DECK ALTERNATE

# *Our Owners Don't Chase Dreams, They Define Them*

## **PUSHING THE ENVELOPE.**

**For more than 33 years, Horizon has been pioneering the design and build of exceptional motor yachts for discerning owners. Leaders in advanced composite technologies and naval architecture, Horizon sets the standards for innovation so our owners can confidently define their dreams.**

### ASSOCIATIONS



### AWARDS





HORIZON

*DEFINE YOUR HORIZON*

