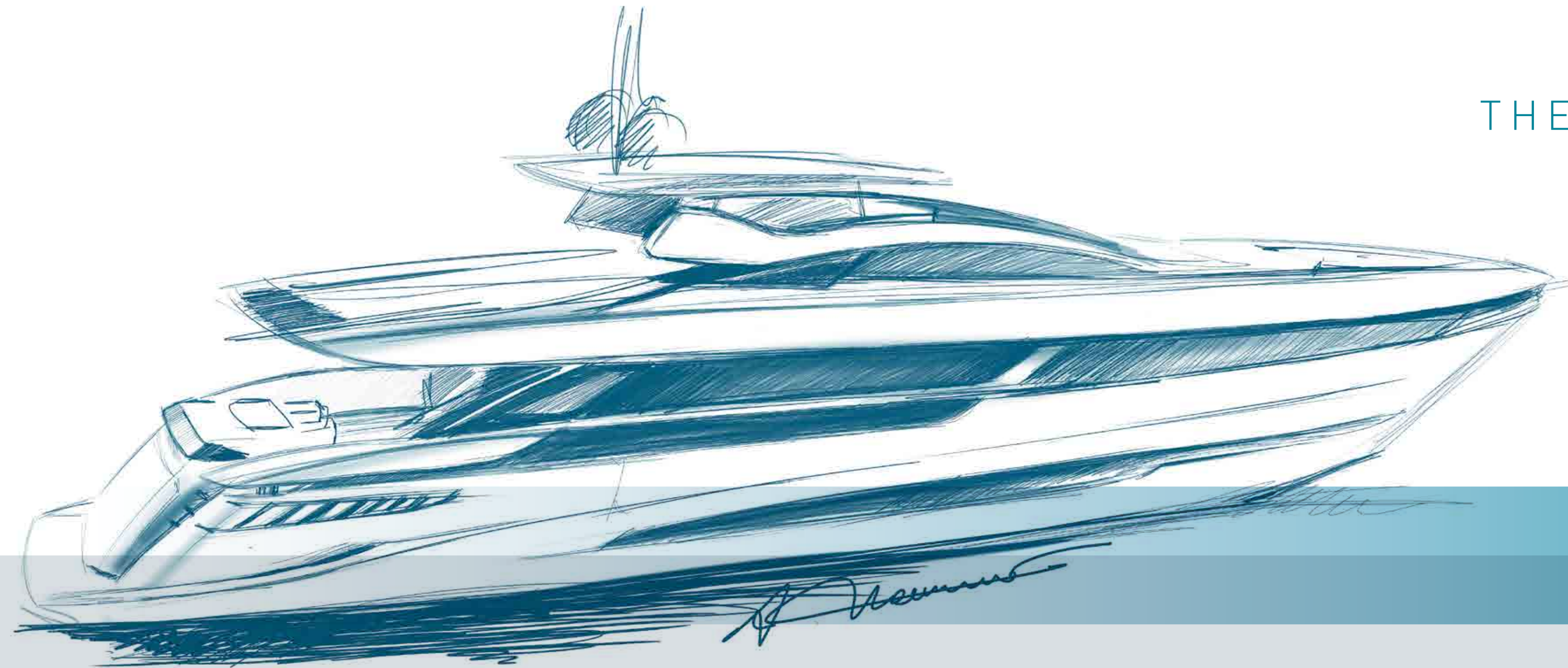


MANGUSTA GRANSFORT 33

**MANGUSTA**



## THE ESSENCE OF EXCELLENCE

Reward yourself with unprecedented COMFORT and PERFORMANCE with our stylish DESIGN, state-of-the-art TECHNOLOGY, HIGH SPEED and OPTIMAL FUEL EFFICIENCY.

Live life at your speed aboard the Mangusta GranSport 33,

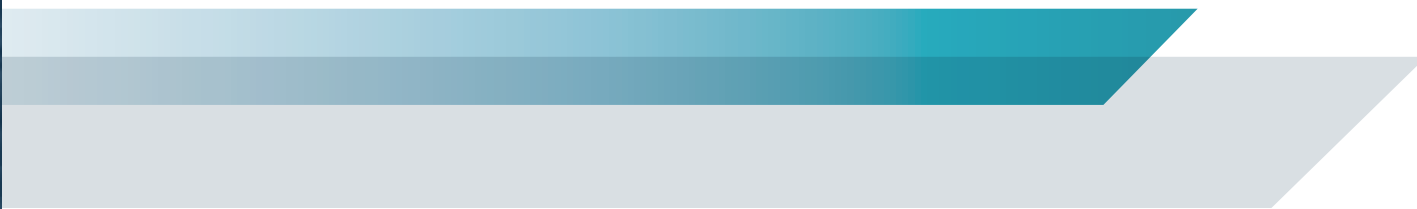
**WHERE DESIGN MEETS TECHNOLOGY.**



CRUISE AT THE  
SPEED OF FREEDOM.













A FLYBRIDGE WHERE RELAXATION RULES











PURE ITALIAN STYLE GRACES THE MAIN SALON



WHEN DINING MEANS DREAMING







LUSH APPOINTMENTS SATISFY EVERY COMFORT







THE SPACE YOU DESERVE







A LUMINOUS OASIS OF PRIVACY AND QUIET





PERFECT AMENITIES FOR BOTH OF YOU







TECHNICAL SPECIFICATIONS MANGUSTA GRANSFORT 33

CONSTRUCTION

HULL	COMPOSITE
SUPERSTRUCTURE	COMPOSITE

DIMENSIONS

LENGTH OVERALL	~ 109' 3"	33.3 M
BEAM	~ 24' 3"	7.4 M
MAX DRAFT	~ 6' 2"	1.9 M
DISPLACEMENT AT FULL LOAD	~ 286,598 LBS	130 T
DISPLACEMENT AT HALF LOAD	~ 253,532 LBS	115 T

TANK CAPACITY

FUEL CAPACITY	~ 2,774 US GALS	10,500 L
WATER CAPACITY	~ 528 US GALS	2,000 L

PROPULSION

MAIN ENGINES POWER	4 X VOLVO PENTA D13-1000 IB – 1000 HP @ 2400 RPM (735 kW)
TRANSMISSION	4 X VOLVO PENTA IPS PODS 1350
STABILIZERS	ZERO SPEED AND UNDERWAY

PERFORMANCE

MAX SPEED HALF LOAD	~ 26 KNOTS
RANGE AT ECONOMICAL CRUISING SPEED (10 KN)	~ 1150 NAUTICAL MILES

ACCOMMODATION

GUESTS	UP TO 12 IN 5 CABINS
CREW	5 IN 3 CABINS

DESIGNERS

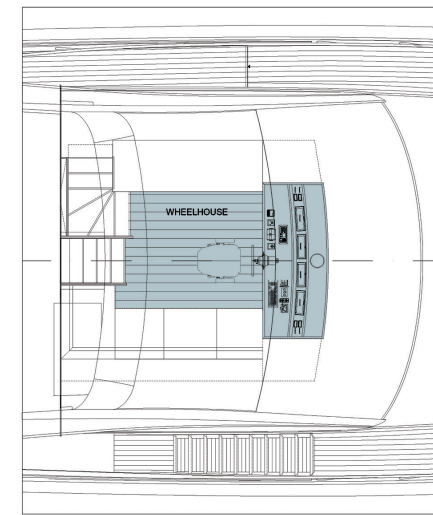
EXTERIORS	ALBERTO MANCINI / OVERMARINE GROUP
INTERIORS	CUSTOM BUILT BESPOKE INTERIORS



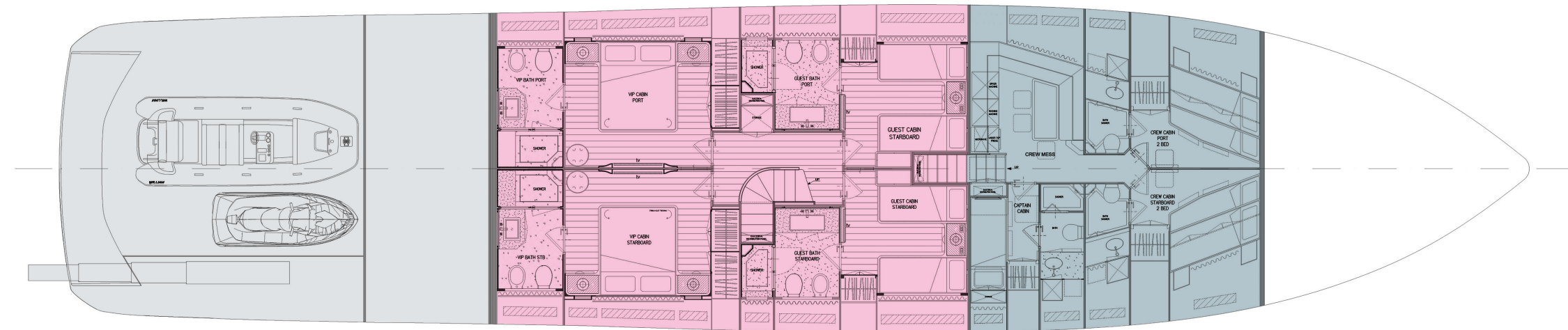
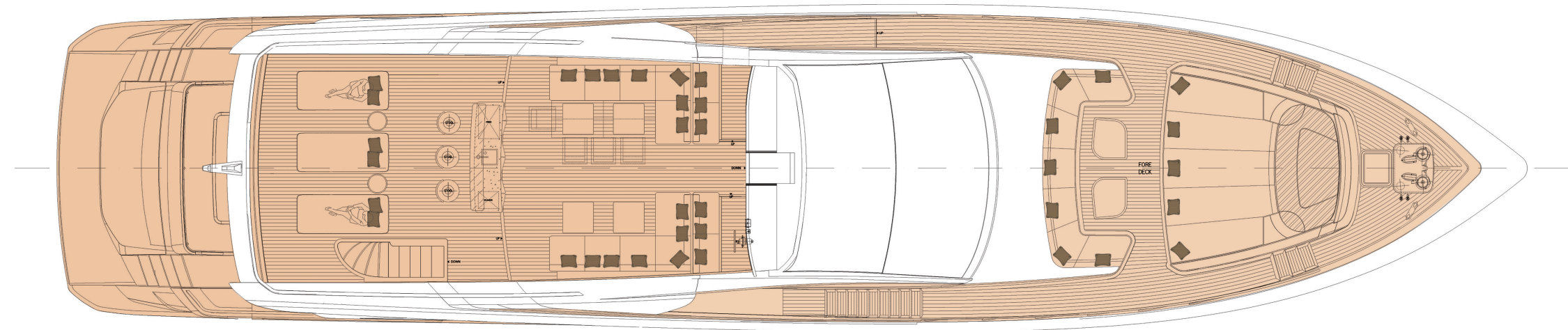
All information contained herein, including technical and performance data, technical layouts, images and graphic reproductions is provided solely by way of information.  
All technical and/or descriptive information only refers to the features of the yacht shown in this brochure.  
Consequently any binding information which is the seller's responsibility will be provided exclusively in the bill of sale and specific manual.



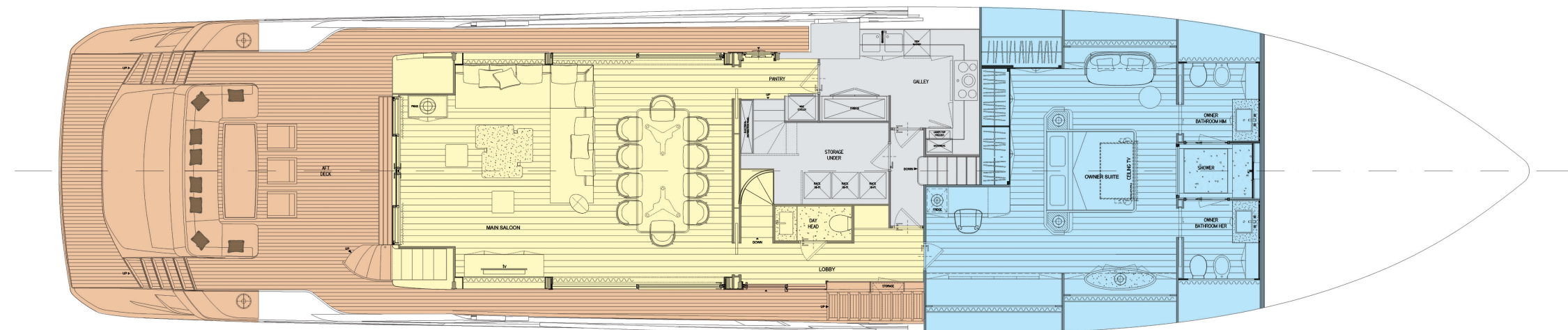
WHEELHOUSE



FLY DECK



LOWER DECK



MAIN DECK

MAIN SALOON & LOBBY

OWNER'S SUITE

SERVICE AREA

GUESTS AREA

CREW AREA

SERVICE AREA





**MANGUSTA GRANSPORT**

**33 | 45 | 54**



